

SHIRE OF COOLGARDIE MUNICIPAL INVENTORY

June 2012



UPDATED BY SHIRE OF COOLGARDIE

Maintaining a greater percentage of original work completed by

CONSIDINE AND GRIFFITHS ARCHITECTS PTY LTD

ARCHITECTURE * URBAN DESIGN * HERITAGE * INTERIORS

6 / 89 FORREST STREET * COTTESLOE * WESTERN AUSTRALIA * 6011

TELEPHONE: (08) 93 811 666 * FACSIMILE: (08) 93 811 566 * ACN 009129944

COOLGARDIE MUNICIPAL INVENTORY

SITE INDEX



Place Name	Site Number
10 JENKIN STREET – HOUSE C1900	43
103 WOODWARD STREET – HOUSE 1896	61
105 WOODWARD STREET – HOUSE 1896	62
107 WOODWARD STREET – HOUSE 1896	63
134 BAYLEY STREET – HOUSE C1900	36
135 BAYLEY STREET – HOUSE LATE 1890's	37
5 JENKIN STREET – INDUSTRIAL BUILDING	44
62 WOODWARD STREET – HOUSE 1890's	65
67 SHAW STREET – HOUSE LATE 1890's	70
72A BAYLEY STREET – SHOP C1900	38
72B BAYLEY STREET – SHOP C1900	39
74 LINDSAY STREET – HOUSE C1901	47
77 BAYLEY STREET – SHOPS	31
77 SHAW STREET – HOUSE 1890's	67
78 SHAW STREET – HOUSE LATE 1890's	71
79 MACDONALD STREET – HOUSE 1895	73
80 TAYLOR STREET – HOUSE 1897	58
82 WOODWARD STREET – INDUSTRIAL BUILDING 1890's	64
82 LINDSAY STREET – HOUSE C1900	48

Place Name	Site Number
83 SHAW STREET – HOUSE C1910	69
83 BAYLEY STREET – HOUSE C1900	33
83 & 84 BAYLEY STREET – SHOP C1900	17
85 SHAW STREET – HOUSE LATE 1890's	72
89 LINDSAY STREET – HOUSE C1900	49
ALFRED'S CAMP	7
BATTERY – STATE	8
BATTERY – COOLGARDIE GOLD LEASE	94
BAYLEY STREET – HOUSE LATE 1890's	35
BAYLEY STREET – PARK	28
BEN PRIOR'S GARAGE	23
BLUFF	95
BONNIEVALE	84
BOORABBIN NATIONAL PARK	1
BOUCHER'S SHOPS	26
BULLABULLING	82
BURBANKS	88
C.A.P.S.	53
CARBINE	91
CARIN'S CAMP	92
CEMETERY – ORIGINAL	40
CEMETERY – PIONEER	41
CONVENT SCHOOL	52
CREMORNE HOTEL	14
CYRIL WORTH'S CAMP	93

Place Name	Site Number
DEDARI No.8 PUMPING STATION	3
DENVER CITY HOTEL	22
DUNNSVILLE	81
DWARF'S HOUSE	77
DWELLING – 58 KING STREET	29
EXHIBITION BUILDING site and ruins	12
FINNERTY'S DAM	56
FIRE STATION	54
FLY FLAT	10
GNARLBINE SOAK	4
GOLD RUSH LODGE	32
GOLDEN HOLE	78
GORGE	96
GOVERNMENT BUILDINGS	20
HARRY BOUCHER'S SHOP AND HOUSE	26
HEALTH CENTRE	55
HIGGINSVILLE	86
HOSPITAL	55
HOUSE C1900 – 83 BAYLEY STREET	33
HOUSE 1895 – 79 MACDONALD STREET	73
HOUSE C1900 – 89 LINDSDAY STREET	49
HOUSE LATE 1890's	35
HOUSE C1900 – 10 JENKIN STREET	43
HOUSE C1900 – 82 LINDSAY STREET	48

Place Name	Site Number
HOUSE 1890's – 62 WOODWARD STREET	65
HOUSE 1897 – 80 TAYLOR STREET	58
HOUSE C1901 – 74 LINDSDAY STREET	47
HOUSE LATE 1890's – 85 SHAW STREET	72
HOUSE LATE 1890's – 67 SHAW STREET	70
HOUSE 1896 – 103 WOODWARD STREET	61
HOUSE C1900 – 134 BAYLEY STREET	36
HOUSE 1896 – 105 WOODWARD STREET	62
HOUSE 1890's 77 SHAW STREET	67
HOUSE C1910 – 79 SHAW STREET	68
HOUSE 1896 – 107 WOODWARD STREET	63
HOUSE C1900 – MCPHERSON STREET	42
HOUSE LATE 1890's 78 SHAW STREET	71
HOUSE LATE 1890's – 135 BAYLEY STREET	37
HOUSE C1910 – 83 SHAW STREET	69
INDUSTRIAL BUILDING – 1890's – 82 WOODWARD STREET	64
INDUSTRIAL BUILDING – 5 JENKIN STREET	44
IVORY'S CORNER	16
JOHN MORGAN WELL – JOHN MORGAN PARK	74
KING BATTERY	75
KINTORE	89
KURRAWANG	80
LONDONDERRY	90

Place Name	Site Number
MASONIC HALL	51
MCPHERSON STREET – HOUSE C1900	42
MERCY GREGORY (TAYLOR) MONUMENT	30
MINING LEASE – CARBINE	91
MINING LEASE – DUNNSVILLE	81
MINING CENTRE – HIGGINSVILLE (OLD TOWNSITE)	86
MISKELLY'S	24
MORAN'S STORE	13
MUNGARI	85
MUSEUM – BEN PRIOR'S	25
MUSEUM – RAILWAY	60
OLD No.8 PUMPING STATION	3
ORIGINAL CEMETERY, SITE HEADSTONES, RAILINGS	40
PARK – BAYLEY STREET	28
PAVILION	45
PENSIONERS LEAGUE	34
PETER PAN	66
PIONEER'S CEMETERY	41
POST OFFICE	19
PREMIER HOTEL	7
PREMIER CAFÉ	21
PRIMARY SCHOOL	59
R.S.L. BUILDING	15
RAILWAY STATION	60

Place Name Number	Site
ROCK TAVERN	2
SHOP C1900 – 72B BAYLEY STREET	39
SHOP C1900 – 72A BAYLEY STREET	38
SHOP C1900 – 83 & 84 BAYLEY STREET	17
SHOPS – 77 BAYLEY STREET	31
SPARGOVILLE	79
ST MARY’S ROMAN CATHOLIC CHURCH	50
ST ANTHONY’S CONVENT OF MERCY	53
STATE BATTERY	8
STONE PAVED RIGHT OF WAY	11
T.E CULLEN & SONS BUTCHERS & NEWSAGENTS	18
THE BLUFF	95
THE GORGE	96
THE GOLDEN HOLE	78
THREE HEAD STAMPER BATTERY	94
TOORAK HILL, GOLDFIELDS WATER SUPPLY RESERVOIR	9
TOWN HALL	27
TOWNSITE – BULLABULLING	82
TOWNSITE – BURBANKS	88
TOWNSITE – (ABANDONED) – BONNIEVALE	84
ULLUMBAY, WALLANGIE, 71 MILE SOAKS	76
VICTORIA ROCK	5
WALLGANGIE ROCKS	76
WARDEN FINNERTY’S HOUSE	57

Place Name	Site Number
WATER SUPPLY BUILDING	58
WIDGIEMOOLTHA	83
WOODLINE between CAVE HILL and BURRA ROCK	6
YHA HOSTEL	46

CONTENTS

EXECUTIVE SUMMARY NUMBERS		PAGE
1.0	INTRODUCTION	Page 1
1.2	Management of Places on the Heritage List	Page 3
1.3	Town Planning Implications	Page 5
1.4	Process	Page 5
2.0	SHIRE OF COOLGARDIE A CHRONOLOGICAL OUTLINE OF DEVELOPMENT	Page 7
2.1	The Aboriginal story – pre and post contact	Page 7
2.2	Exploration and the Hampton land and Railways Syndicate 1829 – 1891	Page 7
2.3	The discovery of gold and the gold boom	Page 9
2.4	Decline and respite 1914 – 1966	Page 18
2.5	The discovery of nickel & the nickel boom 1967 – 1980	Page 18
2.6	The present: 1981 – Present	Page 19
3.0	THEMATIC FRAMEWORK AND PLACE TYPE LIST	Page 21
4.0	SCHEDULE OF HERITAGE PLACES FOR INCLUSION IN THE MUNICIPAL INVENTORY	Page 23
4.1	Introduction	Page 23
	Schedules	Page 24
4.2	Precinct	Page 37
5.0	APPENDICES APPENDIX 1 STATE PLANNING COMMISSION MODEL TOWN PLANNING SCHEME, PART V, SPECIAL CONTROLS APPENDIX 2 COOLGARDIE MUNICIPAL INVENTORY PLACE RECORDS	
6.0	REFERENCES	

MAP 1 – SHIRE OF COOLGARDIE – HERITAGE PLACES

MAP 2 – TOWN OF COOLGARDIE – HERITAGE PLACES

EXECUTIVE SUMMARY

The Shire of Coolgardie Municipal Inventory is a list of all those places in the shire that are believed to be of importance to the cultural heritage of the shire.

Some ninety seven places were assessed and it is assumed that the community may wish to nominate further places, in time. It is important to identify places of special value, especially if they may, at some future time, be effected by development.

The inventory by reference from a town planning scheme amendment, draws all places listed to the attention of the town planning scheme. Some of the places identified have been recommended for inclusion in the Register of the Heritage Council to afford them maximum protection. Fourteen places were identified in this category and nine of them are already registered places.

The vast majority of places identified were Category 2, which will mean that the Shire of Coolgardie will give maximum encouragement to owners to retain these properties. A further large cluster of places fell into Category 4 and are places which have largely, or entirely, disappeared in the physical sense and are simply noted, so that they might be recognized by way of an interpretive marker.

This document is not recommended to Coolgardie Shire Council for adoption by Council.

Council should ensure that the clauses in Appendix 1 are included in the review of the Town Planning Scheme, to give effect to the municipal inventory, and that the inventory, itself, be included in the scheme by reference as a policy.

Council should update this inventory on a regular basis and may need to do so annually, at first. Further updates could coincide with Town Planning Scheme Reviews.

Council may wish to consider incentives may include such things as:

- Professional heritage advice.
- Contributions towards materials for conservation works.
- Rates rebates, or donations, to owners undertaking conservation works.
- Assistance in making funding applications to heritage funding bodies.
- Setting an annual budget for assistance in implementing the above policies.

In response to notifications to owners of an intention to consider places for inclusion in the Municipal Inventory, three objections were received:

- M.I. Goodland
74 Lindsay Street (Site No. 47)
Lots 377 – 378; a Category 2 place.
- V.D. Alford
82 Lindsay Street (Site No. 48)
Lot 363; a Category 2 place.
- M. Pedretti
67 Shaw Street (Site No. 70)
Lot 393; a Category 2 place.

Site numbers 47 and 70 are far too important to exclude from the list, but site number 48 is of marginal value. The owners of the first two places should be approached and the implications of listing carefully explained. The principal change for owners is simply that their properties would require planning approval before development is undertaken. In the case of 67 Shaw Street, there would be no change as it is already included in the Town Planning Scheme, albeit under the old street numbering system. The possible advantages include council incentives, should council so decide and taxation incentives for conservation works, if current proposals before the Federal Government are successful. Coolgardie already has a number of places in its scheme and these places would be added to the list to make it comprehensive.

The Shire of Coolgardie must now decide whether to strike the places from the list that belong to the objectors, or leave them in.

SECTION 1.0 : INTRODUCTION

1.1 THE INVENTORY

The Municipal Inventory is, at its simplest level, a list of Heritage Places that are of importance and relevance to the local community and which the community, through its Town Planning Scheme, can afford protective measures. The inventory, when complete, is submitted to the Heritage Council of Western Australia who may, in turn, submit some of the places nominated in the inventory to its own rigorous assessment process with a view to including some of them on the Register of Heritage Places, should they meet the relevant criteria.

The notion of the municipal inventory process is that it is community based and publicly conducted to ensure a good measure of community involvement, and thus a well supported outcome with realizable vision for the protection of heritage in the Shire of Coolgardie. It should prove a superior process to the 1977 National Estate Survey.

The Municipal Inventory is a requirement under the Heritage of Western Australia Act 1990, and is one of three statutory levels of heritage lists. The other two lists are; the Statutory Database – a general list of places of cultural heritage significance maintained by the Heritage Council; and the Register – a list of places of State significance which warrant the highest level of protection under the Act. The Heritage Council also maintains an informal database of information on places that may have been referred to it and for which no formal assessment exists.

The Municipal Inventory has an important role to play in the conservation of our State's heritage. A number of Western Australian towns have already recognized the importance of heritage and, in advance of the implementation of the Heritage Act, brought in their own lists and some appropriate town planning clauses to protect identified heritage. This was done on the basis of Surveys of the National Estate carried out between 1976 and 1978 and generally took the form of a schedule of places and clauses under the town planning scheme, under Special Provisions, to require building owners to obtain permission for demolition or alterations or the like to places listed in the scheme, prior to undertaking any form of development. In recognition of the Town of Coolgardie's historic importance, regarded as the last word and indeed, needs to be updated to coincide with reviews of the town planning scheme every five years. Heritage does not, after all, stop or start at a particular date and is continuum. Thus, Kambalda has as much of a role in the Shire's heritage as Coolgardie does.

List of places were prepared by the consultant in the early stages of the process from existing sources, including: The Heritage Council of Western Australia, The National Trust of Australia, The Australian Heritage Commission and The West Australian Museum Department of Aboriginal Sites. This data was expanded, or modified, by the Municipal Inventory Committee and will be further impacted upon by the community consultation process. Ultimately, public nominations will be called for and the modified list evaluated to make some determination of relative significance and suitable management strategies. A final list will then be made available for public comment, prior to its adoption by the Shire Council and forwarding to the Heritage Council.

It is well worth quoting from the Act, the interpretation of the meaning of 'Place': ...an area of land sufficiently definable by survey, description or otherwise as to be readily ascertainable and includes –

- (a) an area of land situated below low water mark on the sea shore or on the bank of tidal waters, or in the bed of any watercourse, lake or estuary;
- (b) any works or buildings situated there, their contents relevant to the purposes of the Act and such of their immediate surroundings as may be required for the purposes of the conservation of those works or buildings; and
- (c) as much of the land beneath the place as is required for the purposes of its conservation;

In summary then the Municipal Inventory is a list of places considered to be of cultural heritage value.

1.2 MANAGEMENT OF PLACES ON THE HERITAGE LIST

The next issue to be dealt with, is to formulate guidance on the management of places in an endeavour to conserve their cultural heritage value, or values. The level of management should be related to the value of the place and should be seen as a guide to Council officers in dealing with properties, when development issues require decisions and also to owners where similar issues may be concerned. There may also be thought given to how conservation may be encouraged in a positive way with owners of listed places. Listing should not be seen as a restrictive measure and the benefits of listing should be made widely known and appreciated in the community. In time, the climate of cultural heritage will, no doubt reach a point in Australia, as it has done elsewhere, whereby heritage listed properties have a demonstrable increased market value in comparison to their non-listed peers.

Management categories are as important as the list of places itself, if the list is to have any value.

The finest and most important places will be afforded the highest level of protection and it is likely that these places will be recommended for inclusion in the State Register of Heritage Places. The maximum encouragement should be provided to the owner to conserve the place and its significance.

Places of local importance that are highly regarded by the community, but which are unlikely to meet the required threshold for inclusion in the State Register of Heritage Places, should be offered a high level of protection. Again the owner should be provided the maximum level of encouragement under the town planning scheme to conserve the significance of the place.

Places of a lesser order that have some significance should be conserved, if possible and the conservation of their significance should also be encouraged through the town planning scheme. It is likely that some of these kinds of places will be subject to change or even demolition. Planning staff will need to acquire the skills to advise the skills to advise owners of these places of possible alternatives, where they may exist, to encourage conservation. Before major change or demolition is permitted, the place should be photographically recorded as a minimum.

The fourth category of place may be a site without built features or where an important place once stood. It may be sufficient to fix a small plaque, commemorate the place with naming, or reflect its past importance with urban design. In many cases in Coolgardie, the places are abandoned town sites or mines.

The current edition of this document represents the final inventory for adoption by Council, following the public consultation process. It is intended that Council examine this document and that it be adopted as a policy under the Town Planning Scheme and the scheme be amended, as suggested in Appendix 1. This report is the result of many months of work and is commended to Council.

SECTION 2.0 : SHIRE OF COOLGARDIE – A CHRONOLOGICAL OUTLINE OF DEVELOPMENT

2.1 THE ABORIGINAL STORY – PRE AND POST CONTACT

There is a need to establish the Aboriginal story, pre and post contact. According to Gaston, the Aborigines that he encountered in his prospecting years were small groups who were not hostile to the miners and who very quickly came to be involved in the fringes of the mining camps and towns.

(Gaston, Albert, Coolgardie Gold, Hesperian Press 1984 ed pp 180-185)

It is believed that the numbers of Aborigines on the goldfields prior to contact was quite small and that the presence of the European miner swamped the culture; that women tended to be exploited and that children were used around the miners' camps for labour in exchange for treats like tinned food.

In the early days of post contact there was remarkably little conflict between Aborigines and growing numbers of prospectors. Occasionally prospectors were bailed up for food and from time to time a camp was raided and food and goods removed. There were a few spearing involving animal and even a few murders. Punitive hunts after such incidents often went beyond the seriousness of the crime. On the other hand, the aboriginal people proved invaluable in tracking down lost souls and thieves in the bush and proved adept at station work. By and large they were exploited in many ways, though there were those who sought to protect them through the Christian mission system. Many fell to begging from the white prospectors and miners as these people became the burgeoning majority in the goldfields.

2.2 EXPLORATION AND THE HAMPTON LAND AND RAILWAYS SYNDICATE 1829-1891

Early exploration of the region preceded the discovery of gold and subsequent establishment of Coolgardie, by almost thirty years. Henry M. Lefroy was the first European to examine the district and did so, on behalf of the York Agricultural Society on an expedition mounted in 1863, after which he enthusiastically reported good sheep grazing land. The expeditions led by Charles C. Hunt, in the years 1864 – 1866, also organized by the York Agricultural Society, proved invaluable to Bayley and Ford in their 1892 expedition, though their intended 20,000 acres of land that he maintained was the best he had seen since leaving York and named it 'Hampton Plains' after Governor Hampton. A second expedition, in 1864, was designed to establish a track and series of wells and to explore the Hampton Plains more thoroughly. Hunt undertook a final expedition in 1866, which was also designed to improve Hunt's track and the wells along its route.

(Gresham op cit pp 6-7)

Alexander Forrest also led an expedition, in 1871, through the region, though further east to the expeditions of Hunt and found the land he traversed to be unsuitable for agriculture. Legislation, passed in 1882, encouraged pastoralists to further explore the region and the Hampton Land and Railway Syndicate was formed to take advantage of the new legislation to acquire land, under the Land Act 1882.

Large areas of land were surveyed, in blocks ranging between 1,000 and 5,000 acres, following the plans and as it happened, avoiding the location of the great future gold discoveries.

The early expeditions, however, while passing over the goldfields, made no gold discoveries and the pastoral land opened up during this period failed to live up to expectations. The company had proposed the construction of a railway from Esperance to make land development viable, but the government did not have the resources to do so. The Hampton Land Syndicate proved to be an important player in the development of the Eastern Goldfields, not so much in mining in the direct sense in the early days but more in the sense of servicing the mines, miners and the building industry.

(Gresham op cit pp 15-17)

2.3 THE DISCOVERY OF GOLD AND THE GOLD BOOM

Several prospecting attempts had been made in the region and a party comprising Talbot, Baer and Fosser asserted that they had made the first discoveries. Their ignorance of the method of establishing a claim, meant that they were unable to secure a lease. History, therefore, records Bayley and Ford as establishing the first claim. Bayley was dead before Talbot, Baker and Fosser's assertion was made publicly, but Ford never denied the claim of Talbot et al's earlier discovery.

(Considine and Griffiths 1992, Coolgardie Character Study pp11-12)

Prior to 1892, the major gold producing areas were centered on the Pilbara, Murchison and Ashburton fields, developed by prospectors who began moving south from the Kimberley fields. The nearest significant gold producing area to present day Coolgardie was at Yilgarn, opened in 1888, where about 400 prospectors made use of Southern Cross as their nearest regional centre for supplies and mail.

(loc. Cit)

In 1892, Southern Cross began to de-populate after three years of production that yielded 11,000 ounces of gold. Southern Cross was troubled by ore treatment problems, poor water supply and machinery deficiencies, resulting in high production costs. Miners went on strike in protest against wage reductions and as a consequence the mines closed temporarily, which, in turn, precipitated a population drift from the town.

Using C.C. Hunt's exploration data, Bayley and Ford set off from Southern Cross to follow Hunt's tracks. On 17 September 1892, Bayley presented Warden Finnerty with 554 ounces of gold as proof of a claim that he and Ford were seeking to verify, 192km east of Southern Cross; the claim became known as "Bayley's Reward GML 133". Bayley and Ford collected 1,882 ounces of gold over the next three month period, worth about £8,000 based on the value of the day at £4/4/11 per ounce. News of the strike spread rapidly and the gold-rush rapidly got under way, reviving the fortunes of Southern Cross, in the process, as a gateway to the goldfields and the main point of supply.

A settlement site was soon established at Fly Flat, immediately east of present day Coolgardie. Hopeful prospectors were drawn from other parts of Western Australia, from across Australia and from many other countries, notably New Zealand, South Africa and the United States of America. Many were inexperienced and ill equipped for the hardships that confronted them.

Within two months of the claim being made by Bayley and Ford, there were over 300 prospectors working in the area, placing a considerable strain on the very limited water resources, to the point where Warden Finnerty requested that many prospectors should return to Southern Cross until supplies could be replenished.

Rainwater was rare and ground water mainly very saline; in the early times all transport required permits and watering was designated, at prescribed water holes, to ensure water for all travelers.

(Patterson, Marion; 1982, Coolgardie, Western Australia, Coolgardie Tourist Bureau)

In 1892, Robert Gleddon, a licensed surveyor, was appointed the first mining registrar and in addition, surveyed the first 184 town lots for the town of Coolgardie. Gleddon went on to make a fortune through land dealings in the goldfields; later becoming a significant benefactor to the University of Western Australia.

(Johnston 1962 Knights and Theodolites pp 193-194 and p198)

In the early part of 1893, good rains fell and the flow of prospectors resumed so that by May there were 1,000 prospectors in the field. This put a further strain on the water supply and in due course, contributed to deteriorating hygiene standards promoting epidemics of typhoid; Coolgardie was, thus, the subject of two fevers, namely gold and typhoid.

(Considine and Griffiths 1992 : Coolgardie Character Study pp 11-12)

The town site of Coolgardie was surveyed and declared in July 1893. The settlement at Fly Flat decanted to the new town site to the west of the workings. Development was rapid and in characteristic gold-rush town fashion, impermanent at first, in both appearance and substance. The dominant construction techniques comprised bush pole framing with corrugated iron or hessian cladding.

(ibid p12)

Southern Cross was the nearest post office and was given the task of organizing a postal service for the new goldfields. At first, the teamsters carried mail to and from the fields, but, soon after, a camel postal system was established. The owners, Faiz and Tagh Mahomet, had camel posts throughout the goldfields, carrying mail and telegrams from the nearest post or telegraph office.

(Richards, A.D. Coolgardie Post Office p2)

Mail in the goldfields was collected, rather than delivered, and the mail in Coolgardie was left at the first store with Mr. W. Benstead of Faahan and Benstead. Benstead was a butcher who operated out of tent premises.

To cope with the volume of claims and administer justice, Warden Finnerty was relocated to Coolgardie from Southern Cross. In addition to his duties as registrar of mining leases, he undertook the duties of Postmaster for a short time. Finding the burden too great, he appointed his Mining Registrar, Mr. Oakes, as part-time Postmaster. In turn, Oakes found the duties too onerous and the need for a proper Post Office became a pressing one. In 1893, Mr. F. Inkpen, a postal assistant, was transferred to Coolgardie and a tent was erected as a Post Office at the top of Hunt Street.

(Richards op cit p2-3)

In the winter of 1893, Alexander Forrest and James Dunn discovered gold at the "place of the eagle hawk", Kunanalling (or The Twenty-five Mile) and a rush from Coolgardie began, giving rise to a shanty town. The town site itself was not gazette until 1897. Kunanalling was supplied through Coolgardie. Upon Forrest's recommendation, the government constructed a dam, which was owned and maintained by the Eastern Goldfields Works Department and from which water was drawn for the town and for transport to surrounding districts, including Coolgardie. In dry seasons, it, too, dried up and condensers were relied upon. The principal mine was the Premier.

(Bounsell, S.R. Kunanalling, Bounsell 1988, p4, p8 and p10)

Plans were prepared by the Public Works Department for a Post Office building in 1893 and on 7 December 1893, a tender was accepted for the construction of a temporary post office, pending the completion of permanent buildings. The temporary building cost £464 and was constructed on the corner of Bayley and Hunt Streets opposite the site of the proposed permanent Post and Telegraph Offices. The permanent complex included the Warden's Court and Quarters, Registrar's and Mining Surveyor's Office.

(Public Works Department Report to Parliament 1894)

On 5 April 1894, the Coolgardie Goldfield was officially constituted and Finnerty was made the Warden. By this time, there were 7,091 Miner's Rights issued in the Coolgardie area, out of a total of 11,252 issues statewide in the year that the Department of Mines was established. By July Coolgardie was declared a municipality.

(Patterson op cit pp2 & 3)

Coolgardie's first and most successful newspaper, The Coolgardie Miner, commenced publication in 1894 and on 8 May that year, published an article that echoed the developing town's confidence in the future and the fervent wish for permanence, progress and growth.

In December 1894, the Coolgardie Municipal Council was elected, committed to improvement, progress and the orderly development of the town, as well as providing a voice to State government to fulfill the needs of a permanent water supply, communications, education and health care. A substantial town had developed, far more extensive than that of today and included suburbs to the north and south.

(Griffiths op cit p14)

In response to the growing needs of Coolgardie, a series of plans were prepared for public buildings to accommodate the Post and Telegraph, police offices, Warden's Court and Registry Office. The earliest scheme depicts a low-key vernacular building with a hipped roof, simple detailing and encircling verandah. Out-buildings were to house a lock-up and cookhouse. The scheme was not built and there was no indication of the intended site within the reserve that was surveyed for the purpose. It is likely that, in response to a need for increased accommodation and the community's desire for a more impressive building, a completely new set of plans were prepared under the direction of the Government Architect, George T. Poole.

(refer to: PWDWA 2859 PWDWA 3012 & PWDWA 3012)

In the meantime by 1895, Kunanalling's largest mine, the Premier, was brought into full operation, though production was hampered by the severe conditions, unreliable water supplies and the near exhaustion of readily available timber to fuel boilers and condensers.

(Bounsell op cit pp 10-11)

By this time, the Hampton Plains Estate Limited had begun to reap some of the benefits of the land acquired by them, under the Land Act of 1882, producing water-harvesting condensers and bricks through its subsidiary, the Coolgardie Pressed Brick Works. It also constructed the Wollubar Dam, near Kambalda, in 1897.

(Bounsell op cit pp 10-11)

By January 1896, the government hospital was filled with patients suffering with typhoid, but for the first time there was a sense that hospital facilities were adequate. Typhoid and fire were the underlying reasons for a number of ordinances regulating hygiene and construction requirements.

(Whittington, Vera; Gold and Typhoid; Two Fevers, A Social History of Western Australia 1891-1900 p120)

On March 12 1896, the new catholic church was opened and Archbishop Gibney inspected the progress of the provision of the St John of God's Hospital, which finally opened in a temporary form, in June of the same year.

(Whittington op cit p124 and 132)

A report in the Coolgardie Miner 31 March 1896, gives some indication of the public's opinion of its new Post Office:-

We refer to the extraordinary jumble of indifferent stone and porous clay facetiously termed the Post Office Building..... Externally and internally, it is ugly, atrociously so and reminds us of a very bad cross indeed between a second rate stable and an Ancient West Australian Gaol.....It does not possess one redeeming feature.

Coolgardie continued to grow rapidly and by November 1895, the Post and Telegraph staff had grown to 40. Other centres in the goldfields also grew rapidly and the Public Works Department had difficulty in keeping pace with additional accommodation for all kinds of public functions. A temporary, portable Post Office building was developed to offset the problem; ten of which were made and transported to the goldfields. By 1896, Coolgardie received its first portable structure to supplement the permanent structure. The contract for the transportable was let on 29 May 1896 and the building was occupied on 29 August.

(Richards op cit p7)

In 1896, the railway extension from Southern Cross was completed and heralded the beginning of some very significant developments. The isolation of the very early years was over. Heavier equipment, water condensers and building materials were readily transported. Food supply, in quantitative and qualitative terms, improved which benefitted the people greatly. Life in the town improved and so, too did the quality of the buildings that were constructed. Coolgardie began to take on an air of permanence and the appearance of a small prosperous Victorian city. Much of the residential construction continued to be framed and clad, with masonry construction being reserved for important public projects, banks, hotels, the railway station and the like. The station opened with the arrival of the first train on March 23, 1896. The first electric lighting followed shortly after on 4 April and street lighting was installed in Bayley Street by August. Coolgardie became the first goldfields town to have street lighting.

(Considine and Griffiths op cit pp 13-14 and Whittington op cit p 134)

Hotels predominated in the main street, with no less than sixteen down Bayley Street and twenty six altogether, all well patronized. There were three breweries and four clubs, including a Japanese Club and in its heyday Coolgardie offered its public seven newspapers. Three dailies; The Coolgardie Miner, The Goldfields Chronicle and the Golden Age – and there were four weekly papers.

The buying and selling of stocks and shares was an early business activity in Coolgardie. There were two stock exchanges, an 'open call' market which proved a thorough success and twenty five stockbrokers.

The Government Administration Offices and Public Buildings flanked much of the northern side of central Bayley Street; the three storied Warden's Court was on the west of the complex, with the Post Office to the east.

(Aikman.M.S., COOLGARDIE 1892-1900, The Architect June 1971,p23)

In 1896, George T. Poole's new complex, built to accommodate the Warden's Court and the Mines Department, was completed on a site immediately to the west of the Post Office; this was a large three storey structure. A previous scheme, intended for Hunt Street, was a whimsical confection with Gothic elements and Romanesque arches shrouding a Beaux Arts plan. However, the final design for the Bayley Street site was in a Classical Freestyle in response to criticism of the Picturesque Style of the Post Office and perhaps the original concept. It, too, met with public criticism.

In September 1896, an act of parliament was passed authorizing the commencement of the Coolgardie Water Scheme. About the same time it was noted that about 300 Aborigines were gathered in Coolgardie.

(Whittington op cit p 138 & 139)

Also in September 1896, the rail link to Kalgoorlie was completed and Coolgardie found it was no longer the hub of the transport network for the goldfields. It was the beginning of the end for Coolgardie as the regional distribution centre. Later, in November, in the suburb of Montana, the first permanent St. John of God's Hospital in Australia was opened.
(Whittington op cit p142 & p143)

In 1897, the swimming baths were opened and in January the third great fire swept the town.
(Whittington op cit p149 and p151)

Also in 1897, eight new town sites were declared at Bonnievale, Burbanks, Dunnsville, Kambalda, Kintore, Kundana, Widgiemooltha and Wongi. Kambalda had developed out of gold on the shores of Lake Lefroy; the previous year at Red Hill and at St.Ives in 1897. The Hampton Plains company took a major interest in the Red Hill mine and played an important role in the development of the town of Kambalda.

(Whittington p168; Gresham, J.J., Kambalda, History of a Mining Town 1991, pxi and Gresham op cit p.18)

The post office was, again, expanded and the Public Works Report to Parliament of 1898 stated:-

COOLGARDIE POST OFFICE ADDITIONS

Two storied principally, large additions to mail room, new money order, savings bank and stamp offices, postmaster's office, record room and two clerk's rooms on the ground floor. On the first floor, quarters of six rooms, kitchen, scullery, store rooms, bathroom and asphalt courtyard. Public clock brackets.

Stable of two stalls, harness rooms, battery cleaning room and fencing.

Concrete foundations, stone and brick walls, iron roofs. Completed in January 1898.

Contract let and completed within the year. The new buildings partly replace the original corner tower which was inconvenient and not adapted to carry a second storey.

In 1892, the annual value of gold production in Western Australia was worth £226,000 and by 1894 had risen to £787,000. In 1899, the combined production of Coolgardie and Kalgoorlie had reached 6,200,000 ounces. A substantial town of some 15,000 people had developed with a further 10,000 people in the surrounding area. Many substantial buildings had been constructed including banks, breweries, commercial premises, churches, entertainment halls, sports facilities and service buildings.

(Considine and Griffiths 1994, Kambalda Character Study p15)

By 1898, Kunanalling was developing rapidly, with the construction of a post office-cum-hall; a double-fronted store; police station; courthouse and mechanics' institute; together with a school; schoolmaster's house and many houses. At this point in time, the Premier Mine employed 400 men.

(Bounsell op cit p5 & 16)

On 3 March 1899, an International Exhibition was opened at Coolgardie which lasted for three months, in a specially constructed pavilion (since destroyed). The Exhibition consolidated Coolgardie as a place of importance and eventually became Western Australia's first school of mines. In July 1899, it became a technical school after the opening of the Kalgoorlie School of Mines. It eventually fell into disrepair and was destroyed by fire in July 1929.

In 1903, the Coolgardie Water Supply was completed and opened, carrying water from Mundaring to Coolgardie, a distance of 560kms; an historic achievement on a grand scale. This supply replaced the five private condenser plants as the sole sources of supply. In the same year, rising production costs led the owners of the Premier Mine in Kunanalling to call for its closure. The miners were paid off and many left the town, though some remained and worked the mine under a partnership arrangement.

(Bounsell op cit p14)

By 1907, the town had settled down, production of gold declined in Coolgardie and the fields to the east overshadowed Coolgardie with large and rich operations. The town began to lose population to other centre's and the suburbs and outlying areas, such as Toorak, were soon deserted. Timber-framed structures were stripped of their cladding and all that was left was the frame itself and their gardens. By the time of the First World War, the population was in steady decline and the war itself contributed to the decline.

(Jack Lynas Oral Evidence and Richards op cit p12)

Kambalda began to de-populate as gold production declined, due to rising costs of production and decreasing rates of frequency of gold-bearing ore at all the workings and by 1907, two years after its water supply was assured with the construction of a pipeline between Woolubar Dam and the town, it was deserted. There was a minor rush, commencing at the Celebration Mine, at some of the nearby Hampton locations 48 and 50, in 1919 and workings were developed by returning soldiers, but, otherwise, there were few who remained in the district. Most of the mines that arose from the 1919 rush had ceased production by the late 1920s. Similarly, there were finds at St. Ives, where, in common with Celebration, a town rapidly developed and equally quickly disappeared when production declined.

(Considine & Griffiths 1994, Kambalda Character Study p16 & Gresham op cit pp 35-36 & 40)

2.4 DECLINE AND RESPITE 1914-1966

By the 1920s, gold production was in decline in the district and sandalwood cutting became more important than prospecting, until the revival of the 1930s. In the meantime, by 1924, Kunanalling's population had declined to 88 and by 1927, the school had closed and few remained in the town.

(Bounsell op cit p26 and p54)

A brief resurgence occurred during the Great Depression with a revival in gold and even small centres like Kunanalling benefitted. The gold standard had been abandoned by Britain and gold had doubled in price from the pre-depression rate of £4 per ounce to £8 per ounce, helping to combat the effects of the depression and making it attractive to mine once more. At a time when many were expected to work for the benefits they were paid during the depression, others decided to try their hand at prospecting, reviving some of the old centres. Indeed, it was during this time that the Golden Eagle nugget was found at Larkinvile by Jimmy Larcome JNR. On 15 January 1931. By 1940, these fortunes were again reserved and affected by the drain of manpower during the Second World War. There was a brief respite after the war with the re-opening of Bayley's Find, until its final closure in 1963.

(Bounsell op cit p85 and Gresham op cit p52-53)

The St Ives Goldfield, near Kambalda, proved a little more enduring, with revivals in 1920s, 1940 and again in 1942. It was from the dumps of the old Queenslander Mine near Kambalda, that the government chemist and mineralogist, E.S. Simpson recorded nickelferous pyrrhotite in 1932.

(Considine and Griffiths 1994, Kambalda Character Study p16 and Gresham op cit p33)

2.5

THE DISCOVERY OF NICKEL & THE NICKEL BOOM 1967 – 1980

In 1954, while the search for uranium was at its zenith, Cowcill remembered samples of ore he had taken from Kambalda in 1939. The School of Mines reported no radioactive material, but found traces of nickel. Samples were taken to Western Mining in Kalgoorlie and assayed in 1955 and it was decided to commence exploration and geological mapping in 1964 – 65. Ore assayed at 8.3% nickel was discovered in January 1966 and the discovery was announced in February. After negotiations with the State government, operations got underway and the company established a new town at Kambalda in 1966, commencing with imported transportable for the men's quarters and alter Kambalda West, commencing in 1968. Nickel production began in 1967 from the Silver Lake Shaft. The new town of Kambalda was coincidentally located over the site of its predecessor. The towns were complete with the entire infrastructure one would expect of a young and growing town. Western Mining, in the process, had become one of the world's major nickel producers. By 1976, eight separate ore bodies were supplying ore to the mill; production was reaching a peak, just as world supplies reached the point of over supply.

(Considine and Griffiths, Kambalda Character Study, pp 17-18 and Gresham pp 71-88)

The impact of Kambalda on Coolgardie was mixed. New economic activities and development were brought to the shire, but they did little to arrest the decline of the town of Coolgardie itself. By 1969, Coolgardie itself, was virtually a ghost town and it was not until the re-opening for some of the gold mines in recent years that decline was arrested and modest growth experienced. The shire took its own measures to promote Coolgardie as a pleasant alternative place to live and has, in recent, been looking at its assets to promote the town more widely.

The new Council offices for Coolgardie were built in 1971 and were followed in 1973 by the new police station; the original gaol in the post office complex closed.

(Patterson op cit p5)

2.6

THE PRESENT : 1981 – PRESENT

By 1980, nickel prices had recovered and Kambalda's future looked much more assured, until another drop in world prices in 1982; though, this time, Western Mining were better prepared to weather the effects of the price drop.

(Gresham op cit p90)

Interest in gold was revived by the abandonment of the gold standard by the United States, in 1971 and more sophisticated methods of recovering gold, making much lower grade ores a viable proposition. In 1980, the old Victory main shaft was diamond-drilled and subsequently, the Victory and later Defiance, open-cut gold mines were established. Similarly, the deposits at St. Ives proved to be important and Kambalda's importance as a gold producer began to take on world-wide proportions.

(Gresham op cit pp 98-99)

Coolgardie Gold NL currently mine 500,000 tonnes of ore and recover at a head grade of 5 grams per tone, to produce 70,000 ounces annually over a number of tenements. They are one of three companies active in the area, employing significant numbers of people directly in mining, with indirect spin-off benefits. The disadvantage of renewed mine blasting near the town has negative consequences to the fabric of historic buildings. In 1981, work began on the gold mine at St. Ives near Kambalda and it became the fourth largest producer in Australia.

The consequences of the prosperity of the two mining centres at Coolgardie and Kambalda is the steady, if modest, growth of both centres. This growth is particularly conspicuous in Coolgardie, where development had been stagnant for so long, where, for many years, a situation existed where more buildings slipped into oblivion than were being constructed.

SECTION 4.0 : SCHEDULE OF HERITAGE PLACES FOR INCLUSION IN THE MUNICIPAL INVENTORY

4.1 INTRODUCTION

What follows are place records of each place nominated for inclusion in the inventory. The records generally contain a photograph; the location; owner's name; a description of the place; and a statement of significance. Further, the record places the location into an historic theme and establishes a level of significance which is reflected in its management category.

The management categories are :-

Category 1 –

Highest level of protection appropriate: recommended for entry into the State Register of Heritage Places; provide maximum encouragement to the owner to conserve the significance of the place.

Category 2 -

High level of protection appropriate: provide maximum encouragement to the owner under the town planning scheme to conserve the significance of the place.

Category 3 –

Retain and conserve, if possible: endeavour to conserve the significance of the place through the provisions of the town planning scheme; photographically record the place prior to any major redevelopment or demolition.

Category 4 –

Historic site without built features. Recognize – for example, with a plaque, place name, or reflection in urban or architectural design.

Category 5 –

Significant, but not essential to an understanding of the history of the district: Photographically record the place prior to any major redevelopment or demolition.

Category 6 –

Assess in more detail when considering a development application.

4.2 PRECINCT

The precinct identified in the Town Planning Scheme No.4 is recommended for re-affirmation as a Heritage Precinct under 5.1.3. of the new town planning scheme and it is recommended that this zone be extended to include both sides of Woodward Street between Jobson and Ford Streets.

SECTION 5.0 : APPENDICES

APPENDIX 1 : STATE PLANNING COMMISSION MODEL HERITAGE PROVISIONS FOR THE MODEL TOWN PLANNING SCHEME PART V : SPECIAL CONTROLS

Part 5 – SPECIAL CONTROLS

This part is intended to contain any special controls and provisions affecting more than one zone, e.g., heritage protection, advertisement controls, tree protection etc.

5.1 HERITAGE – PRECINCTS AND PLACES OF CULTURAL SIGNIFICANCE

5.1.1 Purpose and Intent

5.1.1.1 The purpose and intent of the heritage provisions are:

- (a) to facilitate the conservation of places of heritage value;
- (b) to ensure as far as possible that development that occurs with due regard to heritage values.

5.1.2 Heritage List

5.1.2.1 The Council shall establish and maintain a Heritage List of places considered by the Council to be of heritage significance and worthy of conservation.

5.1.2.2 For the purposes of this clause, the Heritage List means the Municipal Inventory, as amended from time to time, prepared by the Council pursuant to Section 45 of the Heritage of Western Australia Act 1990 (as amended), or such parts thereof as described in the Municipal Inventory.

5.1.2.3 The Council shall keep copies of the Heritage Lists with the scheme documents for public inspection during normal office hours.

5.1.3 Designation of Heritage Precincts

5.1.3.1 The Council shall designate an area of land to be a heritage precinct where, in the opinion of Council, special planning control is needed to conserve and enhance the heritage values and character of the area.

5.1.3.2 The Council shall adopt, for each heritage precinct, a policy statement which shall comprise:

- (a) a map showing the boundaries of the precinct;
- (b) a list of places of heritage significance;
- (c) objectives and guidelines for the conservation of precinct.

5.1.3.3 The Council shall keep a copy of the policy statement for any designated heritage precinct with the Scheme documents, for public inspection during normal office hours.

5.1.3.4 The procedure to be followed by the Council in designating a heritage precinct shall be as follows: -

- (a) the Council shall notify in writing each owner of land affected by the proposal;
- (b) the Council shall advertise the proposal by way of a notice in a newspaper circulating in the district, by way of a sign in a prominent location in the effected area by the designation and by such other methods as the Council consider necessary to ensure widespread notice of the proposal, describing the area which is subject of the proposed designation and where the policy statement, which applies to the precinct, may be inspected;
- (c) the Council shall invite submissions on the proposal within 28 days of the date specified in the notice referred to immediately above;
- (d) the Council shall carry out such other consultations as it thinks fit;
- (e) the Council shall consider any submissions mad and resolve to designate the heritage precinct with or without modification or reject the proposal after consideration of submissions;
- (f) the Council shall forward notice of its decision to the Heritage Council of WA and State Planning Commission.

5.1.3.5 The Council may modify or cancel a heritage precinct or any policy statements which relates to it by following the procedure set out in sub-clause 5.1.3.4 above.

5.1.4 Applications for Planning Approval.

5.1.4.1 In dealing with any matters which may affect a heritage precinct or individual entry on the Heritage List, including any application for planning approval, Council shall have due regard to any heritage policy of Council.

5.1.4.2 The Council may, in considering any application that may affect a heritage precinct or individual entry on the Heritage List, solicit the views of the Heritage Council of WA and any other relevant bodies and take those views into account when determining the application.

5.1.4.3 Notwithstanding any of the existing assessment on record, Council may require a heritage assessment to be carried out prior to the approval for any development proposed in a heritage precinct or individual entry listed on the Heritage List.

5.1.4.4 For the purposes of sub-clause 6.1.1 of the scheme, the term 'development' shall have the meaning as set out in the Town Planning and Development Act (as amended) but shall also include, in relation to any place entered in the Heritage List or contained within a heritage precinct, any act or thing that is likely to significantly change the external character of the building, object, structure or place.

5.1.5 Formalities of Application

5.1.5.1 In addition to the application formalities prescribed in sub-clause 5.1.4 and any formalities or requirements associated with applications for planning approval in any other provision of the Scheme, the Council may require an applicant for planning approval, where the proposed development may affect a place of cultural heritage significance or a heritage precinct, to provide one or more of the following to assist the Council in its determination of the application:-

- (a) street elevations drawn to a scale of not of not smaller than 1:100 showing the proposed development and the whole of the existing development on each lot immediately adjoining the land the subject of the application;
- (b) in addition to a site plan, a plan of the proposed development site showing the existing and proposed ground levels over the whole of the land the subject of the application and the location, type and height of all existing structures and of all the existing vegetation exceeding 2 meters in height and marking any existing structures and vegetation proposed to be removed; such plan shall be drawn at the same scale as the site plan;
- (c) a detailed schedule of all finishes, including materials and colors of the proposed development and unless the Council exempts the applicant from the requirement and any part of it, the finishes of the existing developments on the subject lot and each of lot immediately adjoining the subject lot; and
- (d) any other relevant information which the Council indicates that it considers relevant.

5.1.6 Variations to Scheme Provisions

5.1.6.1 Where desirable to facilitate the conservation of a heritage place or to enhance or preserve heritage values the Council may vary any provision of the Scheme provided that, where in the Council's opinion the variation of a provision is likely to affect any owners or occupiers in the general locality or adjoining the site which is the subject of consideration for variation, the Council shall :-

- (a) consult the affected parties by following one or more of the provisions dealing with advertising uses pursuant to clause 6.3; and
- (b) have regard to any expressed views prior to making its decision to grant a variation.

- 5.1.6.2 In granting variations under sub-clause 5.1.6.1, the Council may enter into a heritage agreement under Part 4 of the Heritage of Western Australia Act 1990 with the owner who would benefit from the variation. The agreement may specify the owner's obligations and contain memorials noted on relevant Certificates of Title.

APPENDIX 2

COOLGARDIE MUNICIPAL INVENTORY

PLACE RECORDS

INTERPRETING HERITAGE STATUS

The following Municipal Inventory Place Records contain some basic information about each place. Included in the top right-hand corner of each street is the existing heritage status. An explanation follows:-

SITE No.

The site number is simply a referencing system internal to the inventory and has no other meaning.

NATIONAL TRUST

This item indicates whether or not a place is classified by the National Trust of Australia (W.A.) Listing in this category has no legal status, but may give rise to moral suasion.

HERITAGE COUNCIL OF W.A.

The item indicates whether a place is included in the Heritage Council of Western Australia's Register of Heritage Places, either in an interim or permanent basis. Listing in this manner brings a place under the protection of the Heritage Act. All development to places within this status requires the approval of the Heritage Act. Unlawful development may result in prosecution.

HCWA No.

This is simply a database reference number that accesses the Heritage Council's database information.

THE NATIONAL ESTATE

This category indicates the status of a place with the Australian Heritage Commission. This classification has the force of law in respect of Commonwealth property, but otherwise has no force.

LOCAL AUTHORITY

The last category indicates the status of a place under the present Town Planning Scheme. An alteration to a place in the Town Planning Scheme requires Planning Approval.

COOLGARDIE MUNICIPAL INVENTORY

DATE OF ASSESSMENT:

LAST REVISION DATE:



SITE No. 1

PREVIOUS LISTINGS

The National Trust W.A.
Heritage Council of W.A.
HCWA No.
The National Estate Listed
Local Authority

Film No. Neg. No. Date: 27 July 2012

PLACE NAME Boorabbin National Park

Type of Place: National Park

Former or other Names

Address: Great Eastern Highway COOLGARDIE

Map Ref.:

Lot/Location:

Diagram/Plan:

C/T: Vol/Folio

Reserve Details: 35004

Vesting: NPNCA

Purpose:

OWNER NAME:

Owner contacted? (Y/N)

Address / Phone / Fax:

Occupied (Y/N) N

Occupier Name:

Public Accessibility: Y

Mining Lease:

DATE BUILT: N/A

Source of Date

ARCHITECT / DESIGNER / BUILDER: N/A

HISTORIC THEME: Environmental Awareness

CONSTRUCTION: N/A

INTEGRITY: High

AUTHENTICITY: High

CONDITION: High

DESCRIPTION: A strip of land of 30,000Ha, 10kms wide and 30kms long, centered on the Great Eastern Highway between Koorarawyllee & Boorabbin, with established conservation values for flora and fauna including three semi arid zone banksias species (*B.audax*, *B. elderiana* and *B.lulfitzil*) and nine species of agamid reptile.

ORIGINAL USE: Town site and pristine Later/ Current Use(s) National Park

HISTORICAL COMMENT: A former town site exists nearby; surface trace of its existence can be seen through the remains of what appears to be a railway platform on the side of the Great Eastern Highway. Also a Morton Bay Fig tree which is not from the area also marks where a town may have been

STATEMENT OF SIGNIFICANCE: An important though undeveloped National Park significant for flora and fauna.

CONSERVATION ACTION: Category 2; responsibilities for its care and maintenance lie outside the Shire's responsibility.

Photographs Current photograph taken by Rose Mitchell

Bibliography

COOLGARDIE MUNICIPAL INVENTORY

DATE OF ASSESSMENT:

LAST REVISION DATE:



SITE No. 2

PREVIOUS LISTINGS

The National Trust W.A.

Heritage Council of W.A.

HCWA No.:

0578

The National Estate Listed

Local Authority

Film No Neg. No. Date: 27/7/2012

PLACE NAME Rock Tavern

Type of Place: Hotel/Tavern

Former or other Names: Bulla Bulling

Address: 30km West of Coolgardie COOLGARDIE

Map Ref.:

Lot/Location: 40

Diagram/Plan:

C/T: Vol/Folio

Reserve Details:

Vesting:

Purpose:

OWNER NAME: L. Minozzi

Owner contacted? (Y/N)

Address / Phone / Fax: Rock Tavern, Bulla Bulling

Occupied (Y/N) Y

Occupier Name: Owner

Public Accessibility: Y

Mining Lease:

DATE BUILT: c1907

Source of Date: Estimate

ARCHITECT / DESIGNER / BUILDER:

HISTORIC THEME: Hospitality

CONSTRUCTION: Ashlar stone walls with a hipped iron roof

INTEGRITY: Moderate

AUTHENTICITY: Moderate

CONDITION: Fair

DESCRIPTION: A small roadside inn made of stone with an iron roof over a rectangular plan with a number of authentic details retained, especially in elements of joinery in doors and windows.

ORIGINAL USE: Coaching Inn

Later/ Current Use(s) Tavern

HISTORICAL COMMENT: This is one of the few remaining roadside inns in the Shire of Coolgardie and it exhibits a number of authentic elements that make it possible to achieve a reasonably authentic conservation programme and improve presentation. No longer open

STATEMENT OF SIGNIFICANCE: Important as an example of the isolated roadside inn.

CONSERVATION ACTION: Category 2

Photographs: Rose Mitchell

Bibliography

COOLGARDIE MUNICIPAL INVENTORY

DATE OF ASSESSMENT:

LAST REVISION DATE:



SITE No. 3

PREVIOUS LISTINGS

The National Trust W.A.
Heritage Council of W.A.
HCWA No.
The National Estate Listed
Local Authority

Listed
Permanent 25/6/93
0583
Listed 11/8/87
T.P.S. No. 4 Schedule V

Film No. Neg. No. Date: 27/7/2012

PLACE NAME Old Pumping Station

Type of Place: Pumping Station

Former or other Names: No. 8 Pumping Station, Dedri (Benari)

Address: Great Eastern Highway BENARI

Map Ref.:

Lot/Location: Ngalbain 75

Diagram/Plan: P 15769

C/T: Vol/Folio

Reserve Details: 38354

Vesting: National Trust of W.A.

Purpose: Preservation of history

OWNER NAME: National Trust of Australia (W.A.)

Owner contacted? (Y/N)

Address / Phone / Fax: PO Box 1162, WEST PERTH

Occupied (Y/N) Y

Occupier Name: Vacant

Public Accessibility: Closed

Mining Lease:

DATE BUILT: 1901

Source of Date: Local History

ARCHITECT / DESIGNER / BUILDER: Part of C.Y. O'Connor scheme

HISTORIC THEME: Technological achievement

CONSTRUCTION: Brick with corrugated iron and metal chimney; steel framed windows locally manufactured and timber and concrete floors.

INTEGRITY: High

AUTHENTICITY: High

CONDITION: Good

DESCRIPTION: The pumping station is a brick building of plain industrial design appropriate to its use. It has an iron roof and a metal chimney. Work on the construction of the pipeline under the direction of engineer-in-Chief C.Y. O'Connor. Began in 1898 but this, the last of the steam pumping stations, was built at the end of 1901. It continued in use until 1970 when superseded by diesel powered plant. It was restored by the trust in cooperation with the Public Works Department. The interior is virtually intact.

ORIGINAL USE: Pumping Station

Later/ Current Use(s) Museum/Vacant

HISTORICAL COMMENT: Mundaring – Kalgoorlie Water Pipeline structure with 2 Babcock and Wilcox boilers; four James Simpson pumps and an Ascot weighbridge all intact, demonstrating the nature and function of the place. Strong associations with C.Y. O'Connor, the schemes engineer and the state most ambitious undertaking engineering project at the time.

STATEMENT OF SIGNIFICANCE: Significant as one of 8 former steam pumping stations in the 1898-1901 Mundaring Kalgoorlie Water Pipeline, an important engineering feat, of major importance in opening up the eastern goldfields and the wheatbelt and contributing to the development of the state. Of technological significance as the best preserved, in engineering terms, of these stations with virtually complete machinery and boilers in authentic working condition.

CONSERVATION ACTION: Category 1; work towards achieving public access.

Photographs Rose Mitchell Bibliography

COOLGARDIE MUNICIPAL INVENTORY

DATE OF ASSESSMENT:

LAST REVISION DATE:



SITE No. 4

PREVIOUS LISTINGS

The National Trust W.A.
Heritage Council of W.A.
HCWA No.
The National Estate Listed
Local Authority

Classified 27/10/76
Interim entry 5/5/92
0556
Listed 21/3/78

Film No. Neg. No. Date:

PLACE NAME: Gnarlbine Soak

Type of Place: Natural Place

Former or other Names:

Address: Victoria Rocks Rd, 30km SW Coolgardie

Map Ref.:

Lot/Location:

Diagram/Plan: D 5796

C/T: Vol/Follo

Reserve Details: 2180

Vesting: Min. for Water Resources

Purpose: Water collection

OWNER NAME: Crown

Owner contacted? (Y/N) N

Address / Phone / Fax:

Occupied (Y/N) N

Occupier Name:

Public Accessibility: Accessible

Mining Lease:

DATE BUILT: 1863

Source of Date: Lefroy's journals

ARCHITECT / DESIGNER / BUILDER: Lefroy / Hunt

HISTORIC THEME: Aboriginal Occupation and Early Settlement

CONSTRUCTION: Natural geographic feature enhanced post European contact

INTEGRITY: N/A

AUTHENTICITY: N/A

CONDITION: N/A

DESCRIPTION: Originally an Aboriginal water hole on the edge of the Gnarlbine Rock, the water source was discovered by Lefroy in 1863 and subsequently became an important watering place for explorers and prospectors. It is a stone well 3 meters in diameter and 2 meters deep, and is now dry. A plaque has been mounted nearby. The reserve comprises 640 acres.

ORIGINAL USE: Water source

Later/ Current Use(s) Dry

HISTORICAL COMMENT: An early source of water for the district

STATEMENT OF SIGNIFICANCE: A place of substantial historical significance, the waterhole having been a watering place for Aborigines and an important source of water for early white explorers and prospectors.

CONSERVATION ACTION: Category 2

Photographs
Bibliography

COOLGARDIE MUNICIPAL INVENTORY

DATE OF ASSESSMENT:

LAST REVISION DATE:



SITE No. 5

PREVIOUS LISTINGS

The National Trust W.A.
Heritage Council of W.A.
HCWA No.
The National Estate Listed
Local Authority

Film No. Neg. No. Date:

PLACE NAME: Victoria Rock Road

Type of Place: Natural Place

Former or other Names:

Address: Victoria Rock Road

Map Ref.:

Lot/Location:

Diagram/Plan:

C/T: Vol/Follo

Reserve Details: 8480

Vesting: NPNCA

Purpose: Flora & Fauna

OWNER NAME:

Owner contacted? (Y/N)

Address / Phone / Fax:

Occupied (Y/N) N

Occupier Name:

Public Accessibility: Y

Mining Lease:

DATE BUILT:

Source of Date

ARCHITECT / DESIGNER / BUILDER:

HISTORIC THEME:

CONSTRUCTION:

INTEGRITY:

AUTHENTICITY:

CONDITION:

DESCRIPTION: 258 hectare nature reserve

ORIGINAL USE:

Later/ Current Use(s)

HISTORICAL COMMENT:

STATEMENT OF SIGNIFICANCE:

CONSERVATION ACTION:

Photographs

Bibliography

COOLGARDIE MUNICIPAL INVENTORY

DATE OF ASSESSMENT:

LAST REVISION DATE:



SITE No. 6

PREVIOUS LISTINGS

The National Trust W.A.
Heritage Council of W.A.
HCWA No.
The National Estate Listed
Local Authority

Film No. Neg. No. Date:

PLACE NAME: Woodline between Cave Hill and Burra Rocks

Type of Place: Woodline

Former or other Names:

Address: Burra Rock Road

Map Ref.:

Lot/Location:

Diagram/Plan:

C/T: Vol/Follo

Reserve Details:

Vesting:

Purpose:

OWNER NAME:

Owner contacted? (Y/N)

Address / Phone / Fax:

Occupied (Y/N)

Occupier Name:

Public Accessibility: Open

Mining Lease:

DATE BUILT: c 1926

Source of Date

ARCHITECT / DESIGNER / BUILDER:

HISTORIC THEME: Timber harvesting

CONSTRUCTION: Rough sawn jarrah and karri

INTEGRITY: High

AUTHENTICITY: High

CONDITION: Fair to Poor

DESCRIPTION: A classic example of a 1930s Woodline. This Woodline stretches for 39kms and has a loading ramp, holding yards, landings and associated camps and rubbish pits scattered along the line.

ORIGINAL USE: Timber harvesting

Later/ Current Use(s) Abandoned

HISTORICAL COMMENT: Woodlines were rail tracks laid extending out from Coolgardie and Kalgoorlie into the surrounding woodland to collect fuel for domestic and industrial consumption.

STATEMENT OF SIGNIFICANCE: This Woodline is significant in that they are rarely found in such good condition with most facets of early timber harvesting present, so close to the Coolgardie / Kalgoorlie area. The 39kms of line also covers a good area of typical goldfields vegetation types and is an excellent scenic route to travel between Cave Hill and Burra Rock.

CONSERVATION ACTION: Category 3

Photographs

Bibliography

COOLGARDIE MUNICIPAL INVENTORY

DATE OF ASSESSMENT:

LAST REVISION DATE:



SITE No. 7

PREVIOUS LISTINGS

The National Trust W.A.
Heritage Council of W.A.
HCWA No.
The National Estate Listed
Local Authority

0582

Film No. Neg. No. Date: 21/7/2012

PLACE NAME: Premier Hotel

Type of Place: Hotel

Former or other Names:

Address: Saisbury Street

Map Ref.:

Lot/Location: 2

Diagram/Plan:

C/T: Vol/Follo

Reserve Details:

Vesting:

Purpose:

OWNER NAME: Fred Bow

Owner contacted? (Y/N)

Address / Phone / Fax: Esperance

Occupied (Y/N) N

Occupier Name:

Public Accessibility: Y

Mining Lease:

DATE BUILT: 1901

Source of Date: Fred Bow

ARCHITECT / DESIGNER / BUILDER: Builder W.Fairweather

HISTORIC THEME: Hospitality

CONSTRUCTION: Stone ruin

INTEGRITY: Low

AUTHENTICITY: High

CONDITION: Poor

DESCRIPTION: The remains of a substantial single storey hotel that once featured surrounding verandahs; it is the most visible remains of the former town of Kunanalling.

ORIGINAL USE: Hotel

Later/ Current Use(s) Ruin

HISTORICAL COMMENT: Built within four years of the declaration of the town and its only surviving building, it is now a ruin. The town was declared in 1897 following a gold claim by Benstead and Henning.

STATEMENT OF SIGNIFICANCE: Significant as one of the few remaining indications of the presence of a town on one of the many abandoned town sites declared in 1897 or thereabouts.

CONSERVATION ACTION: Categories 2 and 4

Photographs Rose Mitchell
Bibliography

COOLGARDIE MUNICIPAL INVENTORY

DATE OF ASSESSMENT:

LAST REVISION DATE:



SITE No. 8

PREVIOUS LISTINGS

The National Trust W.A.
Heritage Council of W.A.
HCWA No.
The National Estate Listed
Local Authority

Classified 27/10/76
Interim entry 5/5/92
0557
Listed 21/3/78

Film No. Neg. No. Date: 21/7/2012

PLACE NAME: State Battery

Type of Place: Industrial

Former or other Names:

Address: Coolgardie – Esperance Highway Coolgardie

Map Ref.:

Lot/Location: Ngalbain 67

Diagram/Plan: P 15250

C/T: Vol/Follo

Reserve Details: 9435

Vesting: W.A. Mint

Purpose: Processing

OWNER NAME: Pluro PTY LTD

Owner contacted? (Y/N) Y

Address / Phone / Fax: 5 Ash Avenue

Occupied (Y/N) Y

Occupier Name:

Public Accessibility: Limited

Mining Lease:

DATE BUILT: 1902

Source of Date: Known

ARCHITECT / DESIGNER / BUILDER:

HISTORIC THEME: Early Industrial and gold processing.

CONSTRUCTION: Timber framed and corrugated iron clad structure with industrial ore processing machinery.

INTEGRITY: High

AUTHENTICITY: High

CONDITION: Fair

DESCRIPTION: The buildings are the original ones dating from 1902, comprising simple timber framed, corrugated iron lined industrial structures designed for their particular functions, i.e. stock piling and crushing ore and extracting gold. The machinery has been updated several times, converting from steam to gas to oil and then to electricity.

ORIGINAL USE: Battery

Later/ Current Use(s) Battery

HISTORICAL COMMENT: One of a number of state built batteries and one of the few intact and remaining in operation.

STATEMENT OF SIGNIFICANCE: A representative industrial building form of historical significance, still performing the same gold extraction function for which it was built in 1902 and reflecting the mining history of Coolgardie.

CONSERVATION ACTION: Category 1

Photographs Rose Mitchell
Bibliography

COOLGARDIE MUNICIPAL INVENTORY

DATE OF ASSESSMENT:

LAST REVISION DATE:



SITE No. 9

PREVIOUS LISTINGS

The National Trust W.A.
Heritage Council of W.A.
HCWA No.
The National Estate Listed
Local Authority

Recorded 27/10/76

TPS No. 4 Schedule V

Film No. 3 Neg. No. 10 Date:

PLACE NAME: Toorak Hill, Goldfields Water Supply Reservoir

Type of Place: Engineering/natural

Former or other Names:

Address: Lefroy Street, 1.5km North, Coolgardie

Map Ref.:

Lot/Location:

Diagram/Plan:

C/T: Vol/Follo

Reserve Details: 9730

Vesting: Min for Water Res

Purpose: Water Supply

OWNER NAME: Water Authority of Western Australia

Owner contacted? (Y/N)

Address / Phone / Fax: Newcastle Street, Perth

Occupied (Y/N)

Occupier Name:

Public Accessibility: Accessible

Mining Lease:

DATE BUILT: 1903

Source of Date: Documentary

ARCHITECT / DESIGNER / BUILDER: C.Y. O'Connor

HISTORIC THEME: Utilities

CONSTRUCTION: Concrete with iron pipe work and valves

INTEGRITY: High

AUTHENTICITY: High

CONDITION: Fair

DESCRIPTION: A large circular reservoir tank into which the Eastern Goldfields Water Supply at first terminated. The tank sits atop Toorak Hill, once the extreme of the gazette town and the name of its southern suburb and is at a point from which the most extensive and informative views of Coolgardie may be seen.

ORIGINAL USE: Reservoir tank

Later/ Current Use(s): Reservoir tank

HISTORICAL COMMENT: the tank is associated with the epic feat of the construction of the Eastern Goldfields Water Supply, one of the States most important and ambitious undertakings.

STATEMENT OF SIGNIFICANCE: the ruins off to the sides of the reservoir and the reservoir itself are significant due to their industrial, archaeological and social significance. The site itself has great aesthetic importance.

CONSERVATION ACTION: Category 1

Photographs Rose Mitchell

Bibliography

COOLGARDIE MUNICIPAL INVENTORY

DATE OF ASSESSMENT:

LAST REVISION DATE:



SITE No. 10

PREVIOUS LISTINGS

The National Trust W.A.
Heritage Council of W.A.
HCWA No.
The National Estate Listed
Local Authority

Classified 27/10/76

1733

Listed 21/3/78

TPS No 4 Schedule V

Film No. Neg. No. Date:

PLACE NAME: Fly Flat

Type of Place: Mining Site

Former or other Names:

Address: Great Eastern Highway, Juradi

Map Ref.:

Lot/Location:

Diagram/Plan:

C/T: Vol/Follo

Reserve Details:

Vesting:

Purpose:

OWNER NAME: Coolgardie Gold NL/Focus minerals

Owner contacted? (Y/N)

Address / Phone / Fax: PO Box 647 Coolgardie

Occupied (Y/N) Y

Occupier Name:

Public Accessibility: N

Mining Lease: Coolgardie Gold NL 1733

DATE BUILT: 1892

Source of Date: Known, date of Bayley's gold discovery

ARCHITECT / DESIGNER / BUILDER:

HISTORIC THEME: Gold discovery and production

CONSTRUCTION:

INTEGRITY: Low

AUTHENTICITY: High

CONDITION: Poor

DESCRIPTION: The area of mining where gold was first discovered in Coolgardie and which became the chief alluvial gold mining area in the foundation period of Coolgardie and the stepping stone for the opening up of the Eastern Goldfields. Little remains of mining shafts and equipment that was scattered across the flat at the time of the National Trust assessment as the mine was re-activated by Coolgardie Gold NL, It is due for closure shortly.

ORIGINAL USE: Mine Site

Later/ Current Use(s) Mine Site

HISTORICAL COMMENT: An historic site, associated with the finding of rich deposits of alluvial gold and for the time being remains a productive site for the time being.

STATEMENT OF SIGNIFICANCE: The site is significant as the point of origin of the opening up of the Eastern and is a key place in the history of the development of Western Australia, though the site is physically much modified by recent mining operations.

CONSERVATION ACTION: Category 4

Photographs Rose Mitchell

Bibliography

COOLGARDIE MUNICIPAL INVENTORY

DATE OF ASSESSMENT:

LAST REVISION DATE:



SITE No. 11

PREVIOUS LISTINGS

The National Trust W.A.
Heritage Council of W.A.
HCWA No.
The National Estate Listed
Local Authority

Classified 27/10/76

3412

Listed 21/3/78

Film No. 3 Neg. No. 5 Date: 27/2/95

PLACE NAME: Stone Paved Rights of Way

Type of Place: Right of Way

Former or other Names:

Address: Bayley Street, Coolgardie

Map Ref.:

Lot/Location:

Diagram/Plan:

C/T: Vol/Follo

Reserve Details:

Vesting:

Purpose:

OWNER NAME: Shire of Coolgardie

Owner contacted? (Y/N)

Address / Phone / Fax: Irish Mulga Drive Kambalda

Occupied (Y/N)

Occupier Name:

Public Accessibility: Accessible

Mining Lease:

DATE BUILT:

Source of Date:

ARCHITECT / DESIGNER / BUILDER:

HISTORIC THEME: Early urban infrastructure

CONSTRUCTION: Granite sets on cambered sub grade.

INTEGRITY: Vestiges

AUTHENTICITY: High

CONDITION: Good

DESCRIPTION: Granite sets in cambered formation lay in the right of way directly north and parallel to Bayley Street in the blocks between Hunt and Renou Streets, in the blocks bounded by Bayley and Sylvester Streets to the north and south of the right of way.

ORIGINAL USE: Right of Way

Later/ Current Use(s) Right of Way

HISTORICAL COMMENT: Ambitious urban development project, which demonstrated far sightedness and still functions as intended.

STATEMENT OF SIGNIFICANCE: Significant townscape element and a testament to the civic ambitions of the town fathers.

CONSERVATION ACTION: Category 2

Photographs
Bibliography

COOLGARDIE MUNICIPAL INVENTORY

DATE OF ASSESSMENT:

LAST REVISION DATE:



SITE No. 12

PREVIOUS LISTINGS

The National Trust W.A.
Heritage Council of W.A.
HCWA No.
The National Estate Listed
Local Authority

Classified 27/10/76

TPS No. 4 Schedule V

Film No. Neg. No. Date: 19/7/2012

PLACE NAME: Exhibition Building site and ruins

Type of Place: Ruin

Former or other Names: Exhibition Building

Address: 9 - 17 Bayley Street, Coolgardie

Map Ref.:

Lot/Location: 2172

Diagram/Plan:

C/T: Vol/Folio

Reserve Details:

Vesting:

Purpose:

OWNER NAME: Crown Land

Owner contacted? (Y/N)

Address / Phone / Fax:

Occupied (Y/N) No

Occupier Name:

Public Accessibility: Accessible

Mining Lease:

DATE BUILT: 1899

Source of Date: Documentary

ARCHITECT / DESIGNER / BUILDER:

HISTORIC THEME: Exhibition and education

CONSTRUCTION: Brick and stone remnants of a large structure that was largely timber framed and iron.

INTEGRITY: Low

AUTHENTICITY: High

CONDITION: Poor

DESCRIPTION: The site contains a small number of archaeological remains of the once large structure of stone, timber frame construction and iron that once stood on the site. The photograph above is contemporaneous and shows the building as it stood in about 1900.

ORIGINAL USE: Exhibition Buildings

Later/ Current Use(s) Education/Ruin

HISTORICAL COMMENT: The building was erected for the Coolgardie international Mining and Industrial Exhibition in 1899. The School of Mines was established in it in 1903 before being transferred to Kalgoorlie the following year. The bulk of the building burnt down in 1929 and its corrugated iron wings were moved to Perth as the first building of the W.A. University in Irwin Street.

STATEMENT OF SIGNIFICANCE: These ruins are significant due to their industrial, archaeological, historical and social significance and in that they are associated with the first school of mines.

CONSERVATION ACTION: Category 2 and 4

Photographs Rose Mitchell
Bibliography

COOLGARDIE MUNICIPAL INVENTORY

DATE OF ASSESSMENT:

LAST REVISION DATE:



SITE No. 13

PREVIOUS LISTINGS

The National Trust W.A.
Heritage Council of W.A.
HCWA No.
The National Estate Listed
Local Authority

Classified 27/10/76

0564

Listed 21/3/78

TPS No. 4 Schedule V

Film No. 1 Neg. No.11,12 Date: 22/7/2012

PLACE NAME: Moran's Stores

Type of Place: Shop and residence

Former or other Names: Counsel Stores

Address: 28 Bayley Street, Coolgardie

Map Ref.:

Lot/Location: 30

Diagram/Plan:

C/T: Vol/Follo 1165/367

Reserve Details:

Vesting:

Purpose:

OWNER NAME: Patricia Dellar

Owner contacted? (Y/N)

Address / Phone / Fax: 28 Bayley Street, Coolgardie

Occupied (Y/N) Yes

Occupier Name: Owner

Public Accessibility: Accessible

Mining Lease:

DATE BUILT: 1895

Source of Date: Known

ARCHITECT / DESIGNER / BUILDER:

HISTORIC THEME: Late 19th century country town commerce

CONSTRUCTION: A coursed random rubble building with brick quoins, an ashlar sandstone façade and a two storey timber verandah with cast iron columns to the ground floor.

INTEGRITY: High

AUTHENTICITY: High

CONDITION: Fair

DESCRIPTION: A large two storied store built in stone with a two storied verandah over the pavement with cast iron columns made by Stewart & Henley of Adelaide. A similar, single storied business premises is located adjacent. Originally built as a providing store and still functioning for that purpose and remarkably still operated by the founder's descendants.

ORIGINAL USE: Store and residence

Later/ Current Use(s) Store and residence

HISTORICAL COMMENT: One of the earliest providing businesses with an early family ownership being retained up to the present day.

STATEMENT OF SIGNIFICANCE: One of the few business premises still surviving and in use in the once built up Bayley Street precinct. Architecturally significant as a building type and for the use of local materials and general design and size of the building.

CONSERVATION ACTION: Category 2

Photographs Rose Mitchell

Bibliography

COOLGARDIE MUNICIPAL INVENTORY

DATE OF ASSESSMENT:

LAST REVISION DATE:



SITE No. 14

PREVIOUS LISTINGS

The National Trust W.A.
Heritage Council of W.A.
HCWA No.
The National Estate Listed
Local Authority

Recorded 27/10/76

0560

TPS No. 4 Schedule V

Film No. 1 Neg. No. 9 Date: 19/1/95

PLACE NAME: Residence

Type of Place: Hotel and Hall fmr

Former or other Names: Cremorne Hotel, Kindergarten

Address: 29 Bayley Street, Coolgardie

Map Ref.:

Lot/Location: 38

Diagram/Plan:

C/T: Vol/Follo

Reserve Details:

Vesting:

Purpose:

OWNER NAME: Patrick Joseph John Mullins

Owner contacted? (Y/N)

Address / Phone / Fax: P.O Box 683 Esperance

Occupied (Y/N) Yes

Occupier Name: Owner

Public Accessibility: Nil

Mining Lease:

DATE BUILT: 1895

Source of Date: Estimate – Heritage Council W.A.

ARCHITECT / DESIGNER / BUILDER:

HISTORIC THEME: Hospitality and entertainment

CONSTRUCTION: Two storey brick building with a stucco façade and iron roof.

INTEGRITY: Low

AUTHENTICITY: Moderate

CONDITION: Fair

DESCRIPTION: A two storey structure with only remnants of the timber verandah. Now only two room's _____
It once fronted a hall, the Cremorne Theatre, where variety acts were performed. The façade has been executed in the freestyle classical manner and has three major and one minor bay.

ORIGINAL USE: Hotel and theatre

Later/ Current Use(s) Kindergarten then Residence

HISTORICAL COMMENT: Once a theatre and hotel of some renown, the theatre closed as the population declined and the hotel followed shortly afterwards. The theatre burnt down after its closure.

STATEMENT OF SIGNIFICANCE: One of the few remaining hotels and a substantial structure that contributes to the Bayley Street precinct.

CONSERVATION ACTION: Category 2

Photographs
Bibliography

COOLGARDIE MUNICIPAL INVENTORY

DATE OF ASSESSMENT:

LAST REVISION DATE:



SITE No. 15

PREVIOUS LISTINGS

The National Trust W.A.
Heritage Council of W.A.
HCWA No.
The National Estate Listed
Local Authority

Classified 27/10/76
listed 2012
0562
Registered 21/3/78
TPS No. 4 Schedule V

Film No. Neg. No. Date: 22/7/2012

PLACE NAME: R.S.L. Building

Type of Place: Hotel fmr

Former or other Names: Marvel Bar Hotel

Address: 31 -33 Bayley Street, Coolgardie

Map Ref.:

Lot/Location: 39 & 40

Diagram/Plan: OP Cool. 76/2

C/T: Vol/Follo

Reserve Details:

Vesting:

Purpose:

OWNER NAME: State R.S.L.

Owner contacted? (Y/N)

Address / Phone / Fax: 28 St Georges Terrace Perth

Occupied (Y/N) Yes

Occupier Name: Owner

Public Accessibility: Limited

Mining Lease:

DATE BUILT: 1898

Source of Date: Estimate

ARCHITECT / DESIGNER / BUILDER:

HISTORIC THEME: Hospitality

CONSTRUCTION: Two storey brick building with decorative stucco façade and iron roof.

INTEGRITY: Low

AUTHENTICITY: Moderate

CONDITION: Fair

DESCRIPTION: A two storied brick building with an elaborate stuccoe façade. The ground floor consists of squat Corinthian pilasters and elaborate flat arches. The upper floor has a deeply arcaded verandah with a central arch and smaller flanking openings with architraves to the piers and free floating pediments over. The parapet is decorated with blind arches, balusters and stout crockets.

ORIGINAL USE: Hotel

Later/ Current Use(s) R.S.L. Perth Western Australia

HISTORICAL COMMENT: The hotel with its elaborate design which complemented its hospitality role was an ambitious, permanent structure demonstrating the great confidence in the town's future at the turn of the century. It remained in operation until 1927.

STATEMENT OF SIGNIFICANCE: A splendid, elaborately decorated building of critical importance in the Bayley Street precinct because it survived the devastation of this street and stands as an example of the opulence and confidence of Coolgardie around 1900.

CONSERVATION ACTION: Category 1

Photographs Rose Mitchell
Bibliography

COOLGARDIE MUNICIPAL INVENTORY

DATE OF ASSESSMENT:

LAST REVISION DATE:



SITE No. 16

PREVIOUS LISTINGS

The National Trust W.A.
Heritage Council of W.A.
HCWA No.
The National Estate Listed
Local Authority

Classified 27/10/76

0567

Listed 21/3/78

Film No. Neg. No. Date: 22/7/2012

PLACE NAME: Shop and House

Type of Place: Shop/House

Former or other Names: Ivory's Corner

Address: 36 Bayley Street Coolgardie

Map Ref.:

Lot/Location: 79

Diagram/Plan:

C/T: Vol/Follo 1600/285

Reserve Details:

Vesting:

Purpose:

OWNER NAME: G.M. Hage

Owner contacted? (Y/N)

Address / Phone / Fax: 36 Bayley Street, Coolgardie

Occupied (Y/N) Yes

Occupier Name: Owner

Public Accessibility: Nil

Mining Lease:

DATE BUILT: 1900

Source of Date: Estimate

ARCHITECT / DESIGNER / BUILDER: N.A. vernacular

HISTORIC THEME: Late 19th century country town commerce/residential

CONSTRUCTION: Stucco brick and iron roof

INTEGRITY: High

AUTHENTICITY: Moderate

CONDITION: Good

DESCRIPTION: Brick and roofed business premises with freestyle classical stucco façade with an ornamented parapet. The associated timber framed house was originally clad in corrugated iron this has recently been replaced with inappropriate hardy-plank cladding.

ORIGINAL USE: Shop and House

Later/ Current Use(s) House

HISTORICAL COMMENT: The place is constructed upon the site of Benstead. Mercer and Co., a butcher's shop originally accommodated in a tent. Benstead became the first post master with mail being collected from his shop after Warden Finnerty relinquished the role and before a permanent post office and postmaster were installed in 1894. Currently used as office space for John Holland Mining.

STATEMENT OF SIGNIFICANCE: One of the few surviving examples in good repair in Bayley Street Precinct of the characteristic shop and house building type using materials of a more permanent nature, demonstrating the mixture of business premises and housing in Bayley Street around 1900 and the growing town's aspirations of permanence.

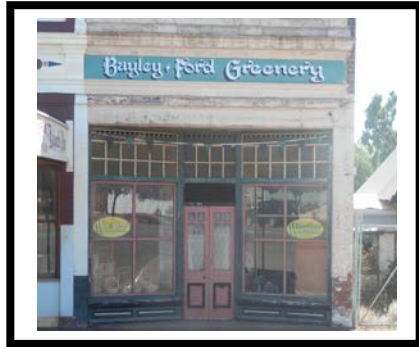
CONSERVATION ACTION: Category 2

Photographs Rose Mitchell
Bibliography

COOLGARDIE MUNICIPAL INVENTORY

DATE OF ASSESSMENT:

LAST REVISION DATE:



SITE No. 17

PREVIOUS LISTINGS

The National Trust W.A.
Heritage Council of W.A.
HCWA No.
The National Estate Listed
Local Authority

Recorded 27/10/76

Film No. Neg. No. Date: 22/7/2012

PLACE NAME: Shop circa 1900

Type of Place: Shop

Former or other Names:

Address: 44 Bayley Street, Coolgardie

Map Ref.:

Lot/Location: 83

Diagram/Plan:

C/T: Vol/Follo

Reserve Details:

Vesting:

Purpose:

OWNER NAME: Jeannette Crawford Lunam

Owner contacted? (Y/N)

Address / Phone / Fax: C/- Haven Caravan Park
Great Eastern Highway Coolgardie

Occupied (Y/N)

Occupier Name: Owner

Public Accessibility:

Mining Lease:

DATE BUILT: 1900

Source of Date: Estimate

ARCHITECT / DESIGNER / BUILDER:

HISTORIC THEME: Late 19th century country town commerce

CONSTRUCTION: Brick building with stucco facades and iron roof and timber framed shop front.

INTEGRITY: High

AUTHENTICITY: High

CONDITION: Fair

DESCRIPTION: One of a modest pair of brick shops with stucco facades with balustrade parapets and piers and bolection molded panels. Vestiges of the ornamental timber verandah remain and the early shop fronts are intact.

ORIGINAL USE: Shop

Later/ Current Use(s) Shop

HISTORICAL COMMENT: This shop with its contemporaneous neighbor represents an example of the main period of development in Coolgardie and remains in use for their intended purpose.

STATEMENT OF SIGNIFICANCE: Significant as a surviving part and significant contributing element of the Bayley Street streetscape and precinct.

CONSERVATION ACTION: Category 2

Photographs Rose Mitchell
Bibliography

COOLGARDIE MUNICIPAL INVENTORY

DATE OF ASSESSMENT:

LAST REVISION DATE:



SITE No. 18

PREVIOUS LISTINGS

The National Trust W.A.
Heritage Council of W.A.
HCWA No.
The National Estate Listed
Local Authority

Recorded 27/10/76

Film No. Neg. No. Date: 22/7/2012

PLACE NAME: Shop Circa 1900

Type of Place: Shop

Former or other Names: T.E. Cullen & Sons Butchers & Newsagents Est. 1939

Address: 46 Bayley Street, Coolgardie

Map Ref.:

Lot/Location: 84

Diagram/Plan:

C/T: Vol/Follo

Reserve Details:

Vesting:

Purpose:

OWNER NAME: M. R. Cullen

Owner contacted? (Y/N)

Address / Phone / Fax: 46 Bayley Street, Coolgardie

Occupied (Y/N) Yes

Occupier Name: Owner

Public Accessibility: Accessible

Mining Lease:

DATE BUILT: 1900

Source of Date: Estimate

ARCHITECT / DESIGNER / BUILDER:

HISTORIC THEME: Late 19th century country town commerce

CONSTRUCTION: Brick building with a stucco façade and iron roof.

INTEGRITY: High

AUTHENTICITY: High

CONDITION: Fair

DESCRIPTION: One of a modest pair of brick shops with stucco facades with balustrade parapets and piers and bolection mould edged panels. Vestiges of the ornamental timber verandah remain and the early shop fronts are nearly intact. The words Bride Cake House are painted on the parapet of the northern shop.

ORIGINAL USE: Shop

Later/ Current Use(s) Shop

HISTORICAL COMMENT: This shop together with its contemporaneous neighbor represents part of the main period of development in Coolgardie and it remains in use for their intended purpose.

STATEMENT OF SIGNIFICANCE: Significant as a surviving part and significant contributing element of the Bayley Street streetscape and precinct.

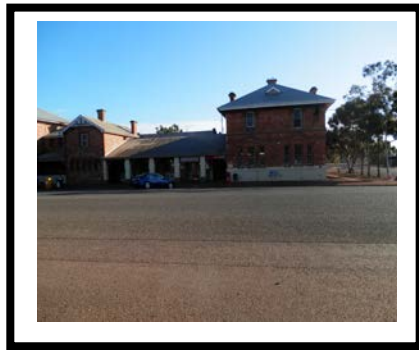
CONSERVATION ACTION: Category 2

Photographs Rose Mitchell
Bibliography

COOLGARDIE MUNICIPAL INVENTORY

DATE OF ASSESSMENT:

LAST REVISION DATE:



SITE No. 19

PREVIOUS LISTINGS

The National Trust W.A.
Heritage Council of W.A.
HCWA No.
The National Estate Listed
Local Authority

Classified 11/6/73
Permanent 30/9/94
0569
Listed 21/3/78
TPS No. 4, Schedule V

Film No. Neg. No Date: 22/7/2012

PLACE NAME: Post Office

Type of Place: Civic Building

Former or other Names: Post Office, Gaol, Police Station and Warden's Court

Address: 55 – 60 Bayley Street

Map Ref.:

Lot/Location: 2105

Diagram/Plan:

C/T: Vol/Folio 1409/888

Reserve Details:

Vesting:

Purpose:

OWNER NAME: Shire of Coolgardie

Owner contacted? (Y/N)

Address / Phone / Fax: Irish Mulga Drive Kambalda

Occupied (Y/N) Y

Occupier Name: Post Office & other mixed community uses.

Public Accessibility: Accessible

Mining Lease:

DATE BUILT: 1894 - 1898

Source of Date: Plans and contemporary documentation

ARCHITECT / DESIGNER / BUILDER: Architect: G. T Poole, minor additions H. Beasley

HISTORIC THEME: Federation Arts and Crafts, Public Service and Government Buildings

CONSTRUCTION: Local, random coursed sandstone with brick quoins and window reveals, corrugated iron roof.

INTEGRITY: High

AUTHENTICITY: High

CONDITION: Good

DESCRIPTION: The building complex grew in 4 major campaigns between 1894 and 1907 as a result of the rapid growth of Coolgardie; however, the building is "well proportioned with a good relationship of different parts". The complex is an intricate picturesque combination of two and one storey parts with verandahs to the former residential areas and a colonnade outside the old postal hall. Some of the ornate chimneys and drawn glass panes in windows remain and adze marks can still be seen on some floor boards.

ORIGINAL USE: Post Office, Police Station

Later/ Current Use(s) Post Office and community use

HISTORICAL COMMENT: the rapid population growth of the goldfields required a post office, it was immediately too small and more accommodation was built in 1896, 1898 and 1907. Designed by George Temple Poole, influential architect, Superintendent of the Public Works Department and Colonial Architect from 1891 – 1896. Hilson Beasley Supt. P.W.D.

STATEMENT OF SIGNIFICANCE: the form scale and massing of the building demonstrates the architectural skills of George Temple Poole, a prominent architect and Superintendent of the Public Works Department. The building helps to define the historic character of Coolgardie's main street. The building strongly contributes to the sense of identity of Coolgardie; a key town in the development of gold mining in Western Australia in the 1890s.

CONSERVATION ACTION: Category 1

Photographs Rose Mitchell

Bibliography

COOLGARDIE MUNICIPAL INVENTORY

DATE OF ASSESSMENT:

LAST REVISION DATE:



SITE No. 20

PREVIOUS LISTINGS

The National Trust W.A.
Heritage Council of W.A.
HCWA No.
The National Estate Listed
Local Authority

Classified 27/10/76
Interim entry 5/5/92
0568
Listed 21/3/78
TPS No. 4 Schedule V

Film No. Neg. No. Date: 22/7/2012

PLACE NAME: Government Buildings

Type of Place: Civic building

Former or other Names: Warden's Court

Address: 62 – 70 Bayley Street, Coolgardie

Map Ref.:

Lot/Location: 2231

Diagram/Plan: D60/40, 89247

C/T: Vol/Follo

Reserve Details: 2446

Vesting: Minister for Works

Purpose: Public Building

OWNER NAME: Department of Housing & works

Owner contacted? (Y/N)

Address / Phone / Fax: Dumas House, 2 Havelock Street, West Perth

Occupied (Y/N) Y

Occupier Name: Departments of Mines / Tourism Bureau

Public Accessibility: Y

Mining Lease:

DATE BUILT: 1898

Source of Date: Known: foundation stone

ARCHITECT / DESIGNER / BUILDER: G.T. Poole

HISTORIC THEME: Freestyle Classical Government Building

CONSTRUCTION: Concrete foundations, sandstone walls, granite columns, brick partition walls, steel girders and iron roof.

INTEGRITY: High

AUTHENTICITY: High

CONDITION: Good

DESCRIPTION: Includes principal offices of the Mines Department. Two storeys, Freestyle Classical building with a colonnaded front façade and first floor balconies. The ground floor includes; the colonnaded front, vestibules and a back verandah and the first floor; the Warden's Court, general office, Warden's rooms and office; rooms for the Jury, Police, Solicitors, Clerk of Courts, Press and Witnesses; and colonnaded balconies. It now houses a good museum in party of the building and the Tourist Bureau.

ORIGINAL USE: Public Buildings

Later/ Current Use(s) Public buildings, museum bank

HISTORICAL COMMENT: The second major government building in Coolgardie after the Post Office. Designed by George Temple Poole, one of the colony's most influential architects and Superintendent of the Public Works Department and Colonial Architect from 1891 – 1896. It was the second scheme, the previous proposal being for a site in Hunt Street.

STATEMENT OF SIGNIFICANCE: An impressive and well preserved Government building of the late 1890's representing the style of local buildings and using local stone. Characteristic of the heyday of the Goldfields prosperity.

CONSERVATION ACTION: Category 1

Photographs Rose Mitchell

Bibliography

COOLGARDIE MUNICIPAL INVENTORY

DATE OF ASSESSMENT:

LAST REVISION DATE:



SITE No. 21

PREVIOUS LISTINGS

The National Trust W.A.
Heritage Council of W.A.
HCWA No.
The National Estate Listed
Local Authority

Film No. 2 Neg. No. 33 Date: 22/7/2012

PLACE NAME: Premier Cafe

Type of Place: Café/Boarding House

Former or other Names: Premier Dining Rooms and Quarters

Address: 69 Bayley Street Coolgardie

Map Ref.:

Lot/Location: 121

Diagram/Plan:

C/T: Vol/Follo

Reserve Details:

Vesting:

Purpose:

OWNER NAME: Brett A Paley

Owner contacted? (Y/N)

Address / Phone / Fax: 69 Bayley Street, Coolgardie

Occupied (Y/N) Y

Occupier Name: Owner

Public Accessibility: Y

Mining Lease:

DATE BUILT: 1890s

Source of Date: Estimate

ARCHITECT / DESIGNER / BUILDER:

HISTORIC THEME: Hospitality

CONSTRUCTION: Masonry front to the shop with a timber frame construction to the rear and an iron roof.

INTEGRITY: Moderate

AUTHENTICITY: Moderate

CONDITION: Good

DESCRIPTION: A café dining room that previously fronted a boarding house that Paddy Hannan was supposed to have stayed in. Until recently the windows were painted with very early signs using gold and silver leaf.

ORIGINAL USE: Café/Boarding house

Later/ Current Use(s) Residence

HISTORICAL COMMENT: Important and rare example on a small scale shop with a boarding house attached to the rear

STATEMENT OF SIGNIFICANCE: A rare example of the combined shop and boarding quarters in the Goldfields.

CONSERVATION ACTION: Category 2

Photographs Rose Mitchell

Bibliography

COOLGARDIE MUNICIPAL INVENTORY

DATE OF ASSESSMENT:

LAST REVISION DATE:



SITE No. 22

PREVIOUS LISTINGS

The National Trust W.A.
Heritage Council of W.A.
HCWA No.
The National Estate Listed
Local Authority

Classified 27/10/76

0561

21/3/78

TPS No. 4 Schedule V

Film No. Neg. No. Date: 22/7/2012

PLACE NAME: Denver City Hotel

Type of Place: Hotel

Former or other Names:

Address: 73 Bayley Street, Coolgardie

Map Ref.:

Lot/Location: 119

Diagram/Plan:

C/T: Vol/Folio 1839/906

Reserve Details:

Vesting:

Purpose:

OWNER NAME: Roseline Enterprises PTY LTD

Owner contacted? (Y/N)

Address / Phone / Fax: 73 Bayley Street, Coolgardie

Occupied (Y/N) Yes

Occupier Name: Owner

Public Accessibility: Accessible

Mining Lease:

DATE BUILT: 1898

Source of Date: Known – Heritage Council of W.A.

ARCHITECT / DESIGNER / BUILDER:

HISTORIC THEME: Hospitality

CONSTRUCTION: Two storey building with ashlar stone quoins and random rubble infill walls with stucco strings and a two storey verandah with iron roof.

INTEGRITY: High

AUTHENTICITY: Moderate

CONDITION: Good

DESCRIPTION: A two storied stone building with a two storied wide verandah and corrugated iron roof, still fully operative as an hotel and representative in design and materials of the corner pub of the late 1890s with evidence of many adaption's and alterations to original building fabric through time.

ORIGINAL USE: Hotel

Later/ Current Use(s) Hotel

HISTORICAL COMMENT: This is the third built on this site; the first two were destroyed by fire. It is now the only remaining licensed hotel in this town which boasted 26 at its peak, 16 of these in Bayley Street. The original hotels on this site were single storey and the last built had the second floor added at a later date in about the 1930s.

STATEMENT OF SIGNIFICANCE: Architecturally significant as a surviving, defining element in the streetscape and the Bayley Street precinct; close to its original character.

CONSERVATION ACTION: Category 2

Photographs Rose Mitchell
Bibliography

COOLGARDIE MUNICIPAL INVENTORY

DATE OF ASSESSMENT:

LAST REVISION DATE:



SITE No. 23

PREVIOUS LISTINGS

The National Trust W.A.
Heritage Council of W.A.
HCWA No.
The National Estate Listed
Local Authority

Film No. Neg. No Date: 22/7/2012

PLACE NAME: Ben Prior's Garage

Type of Place: Service building

Former or other Names:

Address: 63 Bayley Street, Coolgardie

Map Ref.:

Lot/Location: 124

Diagram/Plan:

C/T: Vol/Follo

Reserve Details:

Vesting:

Purpose:

OWNER NAME: Maurice Robert Costello

Owner contacted? (Y/N)

Address / Phone / Fax: C/-Post Office, Coolgardie

Occupied (Y/N) Y

Occupier Name: Coolgardie Restoration Club

Public Accessibility: Y

Mining Lease: Coolgardie Gold NL

DATE BUILT: Late 1920s

Source of Date: Estimate

ARCHITECT / DESIGNER / BUILDER:

HISTORIC THEME: Service and transport

CONSTRUCTION: Rendered masonry, metal joinery and iron roof

INTEGRITY: Moderate

AUTHENTICITY: Moderate

CONDITION: Fair

DESCRIPTION: An unusual composition with sweeping Cape influence gables and a peculiar arrangement of openings addressing the street.

ORIGINAL USE: Garage

Later/ Current Use(s) Offices

HISTORICAL COMMENT: The place is associated with Ben Prior, who collected goldfields machinery, memorabilia and commenced the open air museum adjacent which he left to the Shire.

STATEMENT OF SIGNIFICANCE: A significant presence in Bayley Street with historic associations with Ben Prior.

CONSERVATION ACTION: Category 3

Photographs Rose Mitchell

Bibliography

COOLGARDIE MUNICIPAL INVENTORY

DATE OF ASSESSMENT:

LAST REVISION DATE:



SITE No. 24

PREVIOUS LISTINGS

The National Trust W.A.
Heritage Council of W.A.
HCWA No.
The National Estate Listed
Local Authority

Film No. 3 Neg. No. 1 Date: 27/2/95

PLACE NAME: Miskelly's
Former or other Names:

Type of Place: Shop & house

Address: 41 Bayley Street, Coolgardie

Map Ref.:

Lot/Location: 92

Diagram/Plan:

C/T: Vol/Follo

Reserve Details:

Vesting:

Purpose:

OWNER NAME: Peta Laine & Owen Dalglish

Owner contacted? (Y/N)

Address / Phone / Fax: 41 Bayley Street, Coolgardie

Occupied (Y/N) Y

Occupier Name: Owner

Public Accessibility: N

Mining Lease:

DATE BUILT: c1900

Source of Date: Date Estimate

ARCHITECT / DESIGNER / BUILDER:

HISTORIC THEME: Commercial / residential

CONSTRUCTION: Timber framed construction with weatherboard, fibro and iron cladding.

INTEGRITY: High

AUTHENTICITY: High

CONDITION: Good

DESCRIPTION: A modest house and shop combination built to the back edge of footpath with a framed pediment over the shop front and a verandah over the pavement. Until recent times some of the earlier sign-writing was visible in the pediment over the shop front.

ORIGINAL USE: Shop and House

Later/ Current Use(s) House

HISTORICAL COMMENT: A minor shop and house combination expressive of the type previously in abundance in Coolgardie.

STATEMENT OF SIGNIFICANCE: An important minor house and shop than contributes positively to the historic core and streetscape.

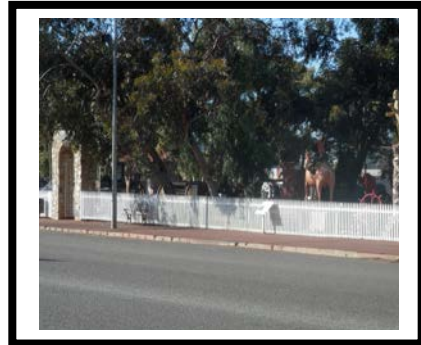
CONSERVATION ACTION: Category 2

Photographs Rose Mitchell
Bibliography

COOLGARDIE MUNICIPAL INVENTORY

DATE OF ASSESSMENT:

LAST REVISION DATE:



SITE No. 25

PREVIOUS LISTINGS

The National Trust W.A.
Heritage Council of W.A.
HCWA No.
The National Estate Listed
Local Authority

Film No. Neg. No. Date: 222/7/2012

PLACE NAME: Museum Ben Prior's

Type of Place: Museum

Former or other Names:

Address: 55 – 59 Bayley Street, Coolgardie

Map Ref.:

Lot/Location: 125-128

Diagram/Plan:

C/T: Vol/Follo

Reserve Details:

Vesting:

Purpose:

OWNER NAME: Shire of Coolgardie

Owner contacted? (Y/N)

Address / Phone / Fax: Irish Mulga Drive Kambalda

Occupied (Y/N) N

Occupier Name:

Public Accessibility: Y

Mining Lease:

DATE BUILT:

Source of Date:

ARCHITECT / DESIGNER / BUILDER: Ben Prior

HISTORIC THEME: A collection of artifacts objects and sculptures.

CONSTRUCTION: Stone, concrete and mesh fences; various materials on the displays.

INTEGRITY: High

AUTHENTICITY: High

CONDITION: Very Poor

DESCRIPTION: A collection of objects related to the Goldfields, gathered by Prior.

ORIGINAL USE: Post Office Site

Later/ Current Use(s) Open Air museum

HISTORICAL COMMENT: A collection of objects and equipment representative of the gold mining industry and donated to the Shire of Coolgardie

STATEMENT OF SIGNIFICANCE: Socially significant but presents aesthetic difficulties for Bayley Street

CONSERVATION ACTION: Category 5

Photographs Rose Mitchell
Bibliography

COOLGARDIE MUNICIPAL INVENTORY

DATE OF ASSESSMENT:

LAST REVISION DATE:



SITE No. 26

PREVIOUS LISTINGS

The National Trust W.A.
Heritage Council of W.A.
HCWA No.
The National Estate Listed
Local Authority

Film No. Neg. No. Date: 22/7/2012

PLACE NAME: Harry Boucher's Shop and House

Type of Place: Shop & House

Former or other Names:

Address: 65 Bayley Street

Map Ref.:

Lot/Location: 123

Diagram/Plan:

C/T: Vol/Follo

Reserve Details:

Vesting:

Purpose:

OWNER NAME: Rod & Jacqueline Mills

Owner contacted? (Y/N)

Address / Phone / Fax: 65 Bayley Street, Coolgardie

Occupied (Y/N) Y

Occupier Name: Owner

Public Accessibility: N

Mining Lease:

DATE BUILT: 1890s

Source of Date: Estimate

ARCHITECT / DESIGNER / BUILDER:

HISTORIC THEME: Commercial and residential

CONSTRUCTION: A central coursed stone rubble structure with framed structures abutting. The front features stucco strings and decorative elements.

INTEGRITY: High

AUTHENTICITY: High

CONDITION: Fair

DESCRIPTION: A modest arrangement of three shops and a house that together combine to make a considerable contribution to the historic core of Bayley Street. The central masonry building appears to have been built first and that other structures have been added subsequently.

ORIGINAL USE: Shops and house

Later/ Current Use(s) Shops and house

HISTORICAL COMMENT: An important minor complex typical of the late nineteenth

STATEMENT OF SIGNIFICANCE: An important contribution to the streetscape and a building composition that has aesthetic

CONSERVATION ACTION: Category 2

Photographs Rose Mitchell

Bibliography

COOLGARDIE MUNICIPAL INVENTORY

DATE OF ASSESSMENT:

LAST REVISION DATE:



SITE No. 27

PREVIOUS LISTINGS

The National Trust W.A.
Heritage Council of W.A.
HCWA No.
The National Estate Listed
Local Authority

Classified 27/10/76

0563

21/3/78

TPS No. 4 Schedule V

Film No. Neg. No. Date: 22/7/2012

PLACE NAME: Town Hall

Type of Place: Civic

Former or other Names: Road Board Office

Address: 76 Bayley Street, Coolgardie

Map Ref.:

Lot/Location: 2158

Diagram/Plan: D 86895

C/T: Vol/Follo

Reserve Details: 3256

Vesting: Shire of Coolgardie

Purpose: Town Hall & Medical

OWNER NAME: Shire of Coolgardie

Owner contacted? (Y/N)

Address / Phone / Fax: Irish Mulga Drive Kambalda

Occupied (Y/N) Yes

Occupier Name: Owner

Public Accessibility: Accessible

Mining Lease:

DATE BUILT: 1903

Source of Date: Known

ARCHITECT / DESIGNER / BUILDER:

HISTORIC THEME: Local Government

CONSTRUCTION: Single storey brick building with a stucco façade and a timber framed corrugated iron clad structure behind.

INTEGRITY: High

AUTHENTICITY: High

CONDITION: Good

DESCRIPTION: The original town hall and road board office built in the 1890s with a respectable 2 room deep brick façade and characteristic timber – framed, corrugated iron clad structure behind. The brick part of the building employs classical motifs and has stucco strings, pilasters and pediments. A later classically derived entrance portico to the offices.

ORIGINAL USE: Road Board Office

Later/ Current Use(s) Community Care and Resource Centre

HISTORICAL COMMENT: The place represents the earliest remaining evidence of accommodation for the local government. It also served as the meeting place of the Mechanics institute.

STATEMENT OF SIGNIFICANCE: A modest example of a characteristic building type, still in use, with historical and civic aspirations. Demonstrates the establishment of the town and its early administration. A critical element in the streetscape of the Bayley Street precinct.

CONSERVATION ACTION: High Level of Protection. Category 2

Photographs Rose Mitchell
Bibliography

COOLGARDIE MUNICIPAL INVENTORY

DATE OF ASSESSMENT:

LAST REVISION DATE:



SITE No. 28

PREVIOUS LISTINGS

The National Trust W.A.

Classified 27/10/76

Heritage Council of W.A.

HCWA No.

1732

The National Estate Listed

Listed 21/3/78

Local Authority

TPS No. 4 Schedule V

Film No. 1 Neg. No. 30 Date: 19/1/95

PLACE NAME: Park

Type of Place: Public Park

Former or other Names:

Address: Bayley Street, Coolgardie

Map Ref.:

Lot/Location: 2157

Diagram/Plan: D 86895

C/T: Vol/Follo

Reserve Details: 39180

Vesting: Shire of Coolgardie

Purpose: Park & Recreation

OWNER NAME: Shire of Coolgardie

Owner contacted? (Y/N)

Address / Phone / Fax: Irish Mulga Drive Kambalda

Occupied (Y/N)

Occupier Name: Owner

Public Accessibility: Accessible

Mining Lease:

DATE BUILT: 1897

Source of Date: Known

ARCHITECT / DESIGNER / BUILDER:

HISTORIC THEME: Urban infrastructure

CONSTRUCTION: Few structures (refer to Mercy Gregory Fountain), bitumen paving, grass and a variety of indigenous and exotic trees.

INTEGRITY: High

AUTHENTICITY: High

CONDITION: Good

DESCRIPTION: A grassed and treed public place in the centre of the town, bounded by Bayley, Sylvester and Wilson Streets. Still used and well maintained. A critical place in the rigorous climate of the goldfields. The park is a perennial green oasis.

ORIGINAL USE: Recreation

Later/ Current Use(s) Recreation

HISTORICAL COMMENT: A park laid down in the 1897 town site plan as parklands, to be used as a place of public pleasure and has been maintained for that purpose to the present day. Also the site of the first inland swimming pool in the southern hemisphere.

STATEMENT OF SIGNIFICANCE: Important as a focus for leisure, relaxation and tourism and as a symbol of civic pride.

CONSERVATION ACTION: Category 2

Photographs

Bibliography

COOLGARDIE MUNICIPAL INVENTORY

DATE OF ASSESSMENT:

LAST REVISION DATE:



SITE No. 29

PREVIOUS LISTINGS

The National Trust W.A.

Heritage Council of W.A.

HCWA No.

The National Estate Listed

Local Authority

Film No. 2 Neg. No. 14 Date: 27/2/95

PLACE NAME:

Type of Place: House

Former or other Names:

Address: 58 King Street, Coolgardie

Map Ref.:

Lot/Location: 1108

Diagram/Plan:

C/T: Vol/Follo

Reserve Details:

Vesting:

Purpose:

OWNER NAME: Gordon Bradley

Owner contacted? (Y/N)

Address / Phone / Fax: PO Box 10686 Kalgoorlie

Occupied (Y/N) N

Occupier Name:

Public Accessibility: N

Mining Lease:

DATE BUILT: c 1900

Source of Date:

ARCHITECT / DESIGNER / BUILDER:

HISTORIC THEME: Gold boom

CONSTRUCTION: Timber framed with a variety of claddings

INTEGRITY: Moderate

AUTHENTICITY: Moderate

CONDITION: Good

DESCRIPTION: A good example of an earlier framed dwelling.

ORIGINAL USE: House

Later/ Current Use(s) Vacant

HISTORICAL COMMENT: A good example of early suburban framed dwelling that grew by a series of accretions.

STATEMENT OF SIGNIFICANCE: A good example of the goldfields type of dwelling, though in a poor state of repair.

CONSERVATION ACTION: Category 5

Photographs

Bibliography

COOLGARDIE MUNICIPAL INVENTORY

DATE OF ASSESSMENT:

LAST REVISION DATE:



SITE No. 30

PREVIOUS LISTINGS

The National Trust W.A.

27/10/76

Heritage Council of W.A.

HCWA No.

0565

The National Estate Listed

21/3/78

Local Authority

TPS No. 4 Schedule V

Film No. 3 Neg. No. 9 Date: 26/2/95

PLACE NAME: Mercy Gregory (Taylor Monument)

Type of Place: Monument

Former or other Names:

Address: Bayley Street, Coolgardie

Map Ref.:

Lot/Location:

Diagram/Plan: D86895

C/T: Vol/Follo

Reserve Details: 2157

Vesting: Shire of Coolgardie

Purpose: Park & Recreation

OWNER NAME: Shire of Coolgardie

Owner contacted? (Y/N)

Address / Phone / Fax: Irish Mulga Drive Kambalda

Occupied (Y/N)

Occupier Name:

Public Accessibility: Accessible

Mining Lease:

DATE BUILT: 1906

Source of Date: Estimate

ARCHITECT / DESIGNER / BUILDER: Builder: Rose & Wintman Sydney

HISTORIC THEME: Commemorative marker

CONSTRUCTION: Picked granite and grano

INTEGRITY: High

AUTHENTICITY: High

CONDITION: Good

DESCRIPTION: Painted stone monument in the form of a drinking fountain using gothic motifs and a symmetrical plan. Located in the Bayley Street Park.

ORIGINAL USE: Fountain

Later/ Current Use(s) Fountain

HISTORICAL COMMENT: Mercy Taylor was a prominent goldfields nurse during the typhoid epidemics that swept the area during the 1890s and early 1900s. The local townspeople were horrified when she was murdered by a bell boy in a hotel during a visit to Sydney.

STATEMENT OF SIGNIFICANCE: Historical and social association with the establishment of the town. Commemorating the life and work of Mercy Taylor, an outstanding woman of the gold rush period.

CONSERVATION ACTION: Category 2

Photographs

Bibliography

COOLGARDIE MUNICIPAL INVENTORY

DATE OF ASSESSMENT:

LAST REVISION DATE:



SITE No. 31

PREVIOUS LISTINGS

The National Trust W.A.
Heritage Council of W.A.
HCWA No.

Recorded 27/10/76

The National Estate Listed
Local Authority

0566
TPS No. 4 Schedule V

Film No. Neg. No. Date: 22/7/2012

PLACE NAME: Row of 3 Shops & Lodge

Type of Place: Shop, Lodge

Former or other Names:

Address: 77 Bayley Street, Coolgardie

Map Ref.:

Lot/Location: 167

Diagram/Plan:

C/T: Vol/Folio

Reserve Details:

Vesting:

Purpose:

OWNER NAME: M.E. and J.D. Charlton

Owner contacted? (Y/N)

Address / Phone / Fax: PO Box 55, Coolgardie

Occupied (Y/N) Yes

Occupier Name: Owner

Public Accessibility: No

Mining Lease:

DATE BUILT: not dated

Source of Date:

ARCHITECT / DESIGNER / BUILDER: not available.

HISTORIC THEME: Late 19th century country town commerce

CONSTRUCTION: Simple single storey, timber framed structure clad with corrugate iron.

INTEGRITY: Moderate

AUTHENTICITY: High

CONDITION: Fair

DESCRIPTION: A group of 4 places with shop front windows and a verandah over the footpath constructed from timber framing. One has an original sign stating "BILLIARDS" hanging under the verandah. Part of the eastern end of the structure was built from brick and formed part of the neighboring hotel.

ORIGINAL USE: Shops

Later/ Current Use(s) Offices

HISTORICAL COMMENT: Part of the late 19th Century main street development terminating the western edge of the commercial centre.

STATEMENT OF SIGNIFICANCE: A significant part of the Bayley Street precinct. A minor but important surviving part of Bayley Street's 19th century streetscape illustrating its small scale, lightly constructed commercial nature.

CONSERVATION ACTION: Category 2

Photographs Rose Mitchell
Bibliography

COOLGARDIE MUNICIPAL INVENTORY

DATE OF ASSESSMENT:

LAST REVISION DATE:



SITE No. 32

PREVIOUS LISTINGS

The National Trust W.A.
Heritage Council of W.A.
HCWA No.
The National Estate Listed
Local Authority

Classified 27/10/76

0570

Listed 21/3/78

TPS No. 4 Schedule V

Film No. Neg. No. Date: 27/7/2012

PLACE NAME: Gold Rush Lodge

Type of Place: Hostel

Former or other Names: Ghost Inn Hotel, Railway Hotel, Railway Lodge Michelle Lodge

Address: 75 Bayley Street, Coolgardie

Map Ref.:

Lot/Location: 168

Diagram/Plan:

C/T: Vol/Folio 1773/140

Reserve Details:

Vesting:

Purpose:

OWNER NAME: L. J. Evans

Owner contacted? (Y/N)

Occupied (Y/N) Yes

Address / Phone / Fax: PO Box 83, Coolgardie

Occupier Name: Owner

Public Accessibility: Accessible

Mining Lease:

DATE BUILT: 1898

Source of Date: Estimated

ARCHITECT / DESIGNER / BUILDER:

HISTORIC THEME: Hospitality

CONSTRUCTION: A two storey tuck pointed brick building with stucco strings, sills and parapets, a two storey balcony with iron lace balustrade and frieze. It has an iron roof.

INTEGRITY: High

AUTHENTICITY: Moderate

CONDITION: Fair

DESCRIPTION: A simple two storied brick corner hotel with a two storied verandah and corrugated iron roof, originally built as a bonded store and later converted and extended as a hotel. The exterior is fairly authentic but the interior has been compromised by a series of alterations and additions and the removal of the bars. The hotel was de-licensed in the 1960s.

ORIGINAL USE: Hotel

Later/ Current Use(s) Hostel / Lodge

HISTORICAL COMMENT: A representative type of hotel in a relatively unchanged state from the main period of Coolgardie's development when 26 hotels operated in the town.

STATEMENT OF SIGNIFICANCE: Architecturally significant as a surviving element, close to its original character, in the Bayley Street streetscape. Important in the definition of the historic Bayley Street Precinct.

CONSERVATION ACTION: Category 1

Photographs Rose Mitchell

Bibliography

COOLGARDIE MUNICIPAL INVENTORY

DATE OF ASSESSMENT:

LAST REVISION DATE:



SITE No. 33

PREVIOUS LISTINGS

The National Trust W.A.
Heritage Council of W.A.
HCWA No.
The National Estate Listed
Local Authority

Film No. Neg. No. Date: 27/7/2012

PLACE NAME:

Type of Place: House

Former or other Names:

Address: 83 Bayley Street, Coolgardie

Map Ref.:

Lot/Location: 164

Diagram/Plan:

C/T: Vol/Follo

Reserve Details:

Vesting:

Purpose:

OWNER NAME: Kevin P Flynn

Owner contacted? (Y/N)

Address / Phone / Fax: 83 Bayley Street, Coolgardie

Occupied (Y/N) Y

Occupier Name: Owner

Public Accessibility: N

Mining Lease:

DATE BUILT: c1900

Source of Date:

ARCHITECT / DESIGNER / BUILDER:

HISTORIC THEME: Gold boom suburban settlement

CONSTRUCTION: Timber framed construction with an iron roof.

INTEGRITY: Moderate

AUTHENTICITY: High

CONDITION: Fair

DESCRIPTION: An expansive hipped roof with a broken back roof over the veranda that encircles most of the house is a strong feature of this house. Parts of the verandahs have been filled in.

ORIGINAL USE: House

Later/ Current Use(s) House

HISTORICAL COMMENT: A moderately important representative house

STATEMENT OF SIGNIFICANCE: A unecertionall typical house important for the way in which it contributes to the overall streetscape of Bayley Street.

CONSERVATION ACTION: Category 2

Photographs Rose Mitchell
Bibliography

COOLGARDIE MUNICIPAL INVENTORY

DATE OF ASSESSMENT:

LAST REVISION DATE:



SITE No. 34

PREVIOUS LISTINGS

The National Trust W.A.
Heritage Council of W.A.
HCWA No.
The National Estate Listed
Local Authority

Film No. Neg. No. Date: 27/7/2012

PLACE NAME: Pensioners League

Type of Place: Club

Former or other Names: United Club Hotel (site of), Country Women's Association

Address: 85 Bayley Street, Coolgardie

Map Ref.:

Lot/Location: 163

Diagram/Plan:

C/T: Vol/Follo

Reserve Details:

Vesting:

Purpose:

OWNER NAME: Australian Pensioners League of WA Inc

Owner contacted? (Y/N)

Address / Phone / Fax: 159 Adelaide Terrace, Perth

Occupied (Y/N) Y

Occupier Name: Pensioners League

Public Accessibility: Y

Mining Lease:

DATE BUILT: c1920

Source of Date: Estimate

ARCHITECT / DESIGNER / BUILDER:

HISTORIC THEME: Historic site and community groups

CONSTRUCTION: A simple framed and mainly fibro clad structure with a simple hipped roof and gables, it is very neatly kept and contributes to the streetscape.

INTEGRITY: High

AUTHENTICITY: High

CONDITION: Good

DESCRIPTION: A former CWA building it is a simple structure set in the centre of its site and with its neat appearance contributes to Bayley Street as part of the overall streetscape.

ORIGINAL USE: CWA

Later/ Current Use(s) Pensioners League

HISTORICAL COMMENT: Set on the site of Coolgardie's most westerly hotel, the United Club Hotel, the CWA accommodation was constructed there in its wake.

STATEMENT OF SIGNIFICANCE: An important site now marked by a modest building that makes a positive contribution to Bayley Street.

CONSERVATION ACTION: Category 2

Photographs Rose Mitchell
Bibliography

COOLGARDIE MUNICIPAL INVENTORY

DATE OF ASSESSMENT:

LAST REVISION DATE:



SITE No. 35

PREVIOUS LISTINGS

The National Trust W.A.
Heritage Council of W.A.
HCWA No.
The National Estate Listed
Local Authority

Recorded 27/10/76

TPS No. 4 Schedule V

Film No. Neg. No. Date: 27/7/2012

PLACE NAME: House late 1890s

Type of Place: House

Former or other Names:

Address: 97 Bayley Street, Coolgardie

Map Ref.:

Lot/Location: 207

Diagram/Plan:

C/T: Vol/Follo

Reserve Details:

Vesting:

Purpose:

OWNER NAME: Dean Craig Andrew

Owner contacted? (Y/N)

Address / Phone / Fax: 97 Bayley Street, Coolgardie WA 6429

Occupied (Y/N) Yes

Occupier Name: George Amy

Public Accessibility: Nil

Mining Lease: N/A

DATE BUILT: 1890s

Source of Date: Estimate

ARCHITECT / DESIGNER / BUILDER:

HISTORIC THEME: Gold boom suburban settlement

CONSTRUCTION: Timber frame and iron

INTEGRITY: High

AUTHENTICITY: High

CONDITION: Fair

DESCRIPTION: A small timber framed cottage with a gabled roof and timber joinery, iron clad walls and iron chimney flues. It has a simply framed verandah.

ORIGINAL USE: House

Later/ Current Use(s) House

HISTORICAL COMMENT: Probably constructed in the late 1890s

STATEMENT OF SIGNIFICANCE: A minor cottage that contributes positively to the character of Bayley Street.

CONSERVATION ACTION: Category 2

Photographs Rose Mitchell

Bibliography

COOLGARDIE MUNICIPAL INVENTORY

DATE OF ASSESSMENT:

LAST REVISION DATE:



SITE No. 36

PREVIOUS LISTINGS
The National Trust W.A.
Heritage Council of W.A.
HCWA No.
The National Estate Listed
Local Authority

Film No. Neg. No Date: 27/7/2012

PLACE NAME: Type of Place: House

Former or other Names:

Address: 134 Bayley Street, Coolgardie

Map Ref.:

Lot/Location: 259

Diagram/Plan:

C/T: Vol/Follo

Reserve Details:

Vesting:

Purpose:

OWNER NAME: T.P. Higgins

Owner contacted? (Y/N)

Address / Phone / Fax: 134 Bayley Street, Coolgardie

Occupied (Y/N) Y

Occupier Name: Owner

Public Accessibility: N

Mining Lease:

DATE BUILT: c1900

Source of Date: Estimate

ARCHITECT / DESIGNER / BUILDER:

HISTORIC THEME: Goldboom suburban settlement

CONSTRUCTION: Timber framed and iron

INTEGRITY: High

AUTHENTICITY: High

CONDITION: Poor

DESCRIPTION: A basic goldfields house in timber frame with an iron gable roof featuring a huge collection of bits and pieces gathered from the locale that decorate the entire exterior of the house.

ORIGINAL USE: House

Later/ Current Use(s) House

HISTORICAL COMMENT: A simple house that has become a curiosity

STATEMENT OF SIGNIFICANCE: A curiosity that has become a minor landmark at the western entry of Bayley Street

CONSERVATION ACTION: Category 3

Photographs Rose Mitchell
Bibliography

COOLGARDIE MUNICIPAL INVENTORY

DATE OF ASSESSMENT:

LAST REVISION DATE:



SITE No. 37

PREVIOUS LISTINGS

The National Trust W.A.
Heritage Council of W.A.
HCWA No.
The National Estate Listed
Local Authority

Film No Neg. No. Date: 27/7/2012

PLACE NAME: House late 1890s

Type of Place: House

Former or other Names:

Address: 135 Bayley Street, Coolgardie

Map Ref.:

Lot/Location: 1734

Diagram/Plan:

C/T: Vol/Follo

Reserve Details:

Vesting:

Purpose:

OWNER NAME: R and V Wiles

Owner contacted? (Y/N)

Address / Phone / Fax: 135 Bayley Street, Coolgardie

Occupied (Y/N) Y

Occupier Name:

Public Accessibility: N

Mining Lease:

DATE BUILT: 1890s

Source of Date: Estimate

ARCHITECT / DESIGNER / BUILDER:

HISTORIC THEME: Gold Boom Settlement, working class housing

CONSTRUCTION: Timber framed, iron clad and iron roof

INTEGRITY: High

AUTHENTICITY: High

CONDITION: Fair

DESCRIPTION: A double gabled roof house of modest proportions with part bull nosed verandahs, set well into its block with surrounding trees. It is the first house on the western approach to town and gives a good indication of the goldfields type of housing. It is partly obscured by landscaping.

ORIGINAL USE: House

Later/ Current Use(s) House

HISTORICAL COMMENT: A typical goldfields house with cumulative accretions that are also at interest.

STATEMENT OF SIGNIFICANCE: A significant minor house that forms parts of the western entry to Coolgardie.

CONSERVATION ACTION: Category 2

Photographs Rose Mitchell
Bibliography

COOLGARDIE MUNICIPAL INVENTORY

DATE OF ASSESSMENT:

LAST REVISION DATE:



PREVIOUS LISTINGS
The National Trust W.A.
Heritage Council of W.A.
HCWA No.
The National Estate Listed
Local Authority

Film No. Neg. No. Date: 27/7/2012

PLACE NAME:

Type of Place: Shops

Former or other Names:

Address: 72A Bayley Street, Coolgardie

Map Ref.:

Lot/Location: 2103

Diagram/Plan:

C/T: Vol/Folio

Reserve Details:

Vesting:

Purpose:

OWNER NAME: M.E. Charlton

Owner contacted? (Y/N)

Address / Phone / Fax: PO Box 55, Coolgardie

Occupied (Y/N) Y

Occupier Name:

Public Accessibility: Y

Mining Lease:

DATE BUILT: c1900

Source of Date: Estimate

ARCHITECT / DESIGNER / BUILDER:

HISTORIC THEME: Town commercial

CONSTRUCTION: Timber frame and iron

INTEGRITY: High

AUTHENTICITY: High

CONDITION: Fair

DESCRIPTION: Two of a row of four shops with a deep verandah and authentic timber framed shop fronts

ORIGINAL USE: Shops

Later/ Current Use(s) Shops

HISTORICAL COMMENT: A part of a row of four shops representative of the commercial part of Bayley Streets historic core.

STATEMENT OF SIGNIFICANCE: An important part of the central Bayley Street historic core.

CONSERVATION ACTION: Category 2

Photographs Rose Mitchell
Bibliography

COOLGARDIE MUNICIPAL INVENTORY

DATE OF ASSESSMENT:

LAST REVISION DATE:



SITE No. 39

PREVIOUS LISTINGS

The National Trust W.A.
Heritage Council of W.A.
HCWA No.
The National Estate Listed
Local Authority

Film No. Neg. No Date: 27/7/2012

PLACE NAME: Row of Shops

Type of Place: Shops

Former or other Names:

Address: 72B Bayley Street, Coolgardie

Map Ref.:

Lot/Location: 2164

Diagram/Plan:

C/T: Vol/Follo

Reserve Details: 24874

Vesting: Road Board Endowment

Purpose:

OWNER NAME: Shire of Coolgardie

Owner contacted? (Y/N)

Address / Phone / Fax:

Occupied (Y/N) Y

Occupier Name:

Public Accessibility: Y

Mining Lease:

DATE BUILT: c1900

Source of Date: Estimate

ARCHITECT / DESIGNER / BUILDER:

HISTORIC THEME: Town commercial

CONSTRUCTION: Timber framed and iron clad

INTEGRITY: High

AUTHENTICITY: High

CONDITION: Good

DESCRIPTION: Two of a row of four shops with deep verandahs and authentic shop fronts

ORIGINAL USE: Shops

Later/ Current Use(s) Shops

HISTORICAL COMMENT: An important part of the development of Bayley Streets commercial development

STATEMENT OF SIGNIFICANCE: An important part of the central Bayley Street historic core.

CONSERVATION ACTION: Category 2

Photographs Rose Mitchell

Bibliography

COOLGARDIE MUNICIPAL INVENTORY

DATE OF ASSESSMENT:

LAST REVISION DATE:



SITE No. 40

PREVIOUS LISTINGS

The National Trust W.A.
Heritage Council of W.A.
HCWA No.
The National Estate Listed
Local Authority

Classified 27/10/76
Interim entry 5/5/92
0558
Listed 21/3/78
TPS No. 4 Schedule V

Film No. Neg. No. Date: 27/7/2012

PLACE NAME: Original Cemetery Site, Headstones, Railings

Type of Place: Cemetery

Former or other Names:

Address: Forrest Street, Coolgardie

Map Ref.: 323574E 654383N

Lot/Location: 1923

Diagram/Plan: OP Coolgardie / 76

C/T: Vol/Follo

Reserve Details: 6441

Vesting: Shire of Coolgardie

Purpose: Cemetery

OWNER NAME: Shire of Coolgardie

Owner contacted? (Y/N)

Address / Phone / Fax: Bayley Street, Coolgardie WA 6429

Occupied (Y/N)

Occupier Name:

Public Accessibility: Yes

Mining Lease:

DATE BUILT: 1890

Source of Date: Estimate

ARCHITECT / DESIGNER / BUILDER:

HISTORIC THEME: Early Settlement

CONSTRUCTION:

INTEGRITY: Vestiges

AUTHENTICITY: High

CONDITION: Fair

DESCRIPTION: The cemetery is a fenced off area of land, approximately 50x50m. It contains two graves which are intact and several piles of stones marking the location of other graves. There is also a memorial to the early pioneers. This was the first burial ground in Coolgardie, containing the graves of the first 32 burials, the most notable of which is the grave of Walsh, the noted discoverer of the underground water source and early explorer.

ORIGINAL USE: Cemetery

Later/ Current Use(s) Cemetery

HISTORICAL COMMENT: the first cemetery in Coolgardie, later abandoned as being too close to the rapidly expanding town in 1894.

STATEMENT OF SIGNIFICANCE: as Coolgardie's first burial ground, the cemetery is significant for its historical link with the early history of the town and important figures in the town's development.

CONSERVATION ACTION: Category 1

Photographs Rose Mitchell
Bibliography

COOLGARDIE MUNICIPAL INVENTORY

DATE OF ASSESSMENT:

LAST REVISION DATE:



SITE No. 41

PREVIOUS LISTINGS

The National Trust W.A.
Heritage Council of W.A.
HCWA No.
The National Estate Listed
Local Authority

Classified 27/10/76
Interim entry 5/5/92
0559
Listed 21/3/78

Film No. Neg. No Date: 27/7/2012

PLACE NAME: Pioneer's Cemetery

Type of Place: Cemetery

Former or other Names:

Address: Great Eastern Highway, Coolgardie

Map Ref.:

Lot/Location:

Diagram/Plan: D 60/41

C/T: Vol/Follo

Reserve Details: 2772

Vesting: Shire of Coolgardie

Purpose: Cemetery

OWNER NAME: Shire of Coolgardie

Owner contacted? (Y/N)

Address / Phone / Fax: Bayley Street, Coolgardie

Occupied (Y/N)

Occupier Name:

Public Accessibility: Yes

Mining Lease:

DATE BUILT: 1894

Source of Date: Known

ARCHITECT / DESIGNER / BUILDER:

HISTORIC THEME: Burial Ground

CONSTRUCTION: Graveyard in clay soils with vestigial remnant bush.

INTEGRITY: High

AUTHENTICITY: High

CONDITION: Various

DESCRIPTION: The current cemetery for the district, located west of the town site area, established in 1894 and containing the graves of many of the early people who worked to establish the town of Coolgardie. The register entry includes stone and timber headstones and cast iron railings and the land on which they stand being reserve 2772. The site is maintained by the Shire of Coolgardie.

ORIGINAL USE: Cemetery

Later/ Current Use(s) Cemetery

HISTORICAL COMMENT: Coolgardie's second cemetery contains in excess of 1000 burials and many of the headstones tell of the hardship of life in the goldfields, including the famous and ordinary folk; Ernest Giles spent his last years in Coolgardie and was buried in this cemetery.

STATEMENT OF SIGNIFICANCE: the cemetery is of substantial historical and social significance, providing a link with a number of individuals who played a role in the foundation of the town.

CONSERVATION ACTION: Category 1

Photographs Rose Mitchell
Bibliography

COOLGARDIE MUNICIPAL INVENTORY

DATE OF ASSESSMENT:

LAST REVISION DATE:



SITE No. 42

PREVIOUS LISTINGS

The National Trust W.A.
Heritage Council of W.A.
HCWA No.
The National Estate Listed
Local Authority

Film No. 3 Neg. No. 7 Date: 27/2/95

PLACE NAME:

Type of Place: House

Former or other Names:

Address: McPherson Street, Coolgardie

Map Ref.:

Lot/Location: 1491

Diagram/Plan:

C/T: Vol/Follo

Reserve Details:

Vesting:

Purpose:

OWNER NAME: Goldfan Ltd

Owner contacted? (Y/N)

Address / Phone / Fax: PO Box 893, West Perth WA

Occupied (Y/N) Y

Occupier Name: Owner

Public Accessibility: N

Mining Lease:

DATE BUILT: c1900

Source of Date: Estimate

ARCHITECT / DESIGNER / BUILDER:

HISTORIC THEME: Gold boom suburban settlement

CONSTRUCTION: Framed walls, fibro clad and an iron roof

INTEGRITY: Low

AUTHENTICITY: High

CONDITION: Good

DESCRIPTION: A minor house much changed with gradual improvements. It retains a good deal of its character.

ORIGINAL USE: House

Later/ Current Use(s) House

HISTORICAL COMMENT: A minor house, indicative of the goldfields type that is capable of ongoing conversation.

STATEMENT OF SIGNIFICANCE: A minor representative goldfields house.

CONSERVATION ACTION: Category 5

Photographs
Bibliography

COOLGARDIE MUNICIPAL INVENTORY

DATE OF ASSESSMENT:

LAST REVISION DATE:



SITE No. 43

PREVIOUS LISTINGS

The National Trust W.A.
Heritage Council of W.A.
HCWA No.
The National Estate Listed
Local Authority

Film No. Neg. No. Date: 27/7/2012

PLACE NAME:

Type of Place: House

Former or other Names:

Address: 10 Jenkins Street, Coolgardie

Map Ref.:

Lot/Location: 1480

Diagram/Plan:

C/T: Vol/Follo

Reserve Details:

Vesting:

Purpose:

OWNER NAME: W.B. Reed and M.T. McCallum

Owner contacted? (Y/N)

Address / Phone / Fax: 10 Jenkin Street, Coolgardie

Occupied (Y/N) Y

Occupier Name: Owner

Public Accessibility: N

Mining Lease:

DATE BUILT: c1900

Source of Date: Estimate

ARCHITECT / DESIGNER / BUILDER:

HISTORIC THEME: Gold boom suburban settlement

CONSTRUCTION: Painted brick walls and iron roof

INTEGRITY: Moderate

AUTHENTICITY: Low

CONDITION: Good

DESCRIPTION: A modest brick construction house with a steeply pitched roof and gable addressing the street, with double hung sash windows and a paneled front door. Much of the detailing on the verandah has been lost and the painting of the walls obscures their original beauty.

ORIGINAL USE: House

Later/ Current Use(s) House

HISTORICAL COMMENT: One of a small number of brick construction houses to survive in the suburb of Montana.

STATEMENT OF SIGNIFICANCE: A remnant of Montana with some fine mature trees in the garden.

CONSERVATION ACTION: Category 3

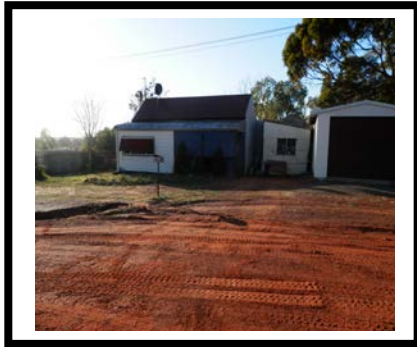
Photographs Rose Mitchell

Bibliography

COOLGARDIE MUNICIPAL INVENTORY

DATE OF ASSESSMENT:

LAST REVISION DATE:



SITE No. 44

PREVIOUS LISTINGS

The National Trust W.A.
Heritage Council of W.A.
HCWA No.
The National Estate Listed
Local Authority

Film No. Neg. No. Date: 27/7/2012

PLACE NAME:

Type of Place: Bakery

Former or other Names:

Address: 5 Jenkin Street, Coolgardie

Map Ref.:

Lot/Location: 1590

Diagram/Plan:

C/T: Vol/Follo

Reserve Details:

Vesting:

Purpose:

OWNER NAME: M.E. and J.D Charlton

Owner contacted? (Y/N)

Address / Phone / Fax: PO Box 55, Coolgardie

Occupied (Y/N) Y

Occupier Name: Owner

Public Accessibility: N

Mining Lease:

DATE BUILT: c1900

Source of Date: Estimate

ARCHITECT / DESIGNER / BUILDER:

HISTORIC THEME: Gold boom Industrial

CONSTRUCTION: Timber framed envelope with iron cladding and brick construction ovens and flue.

INTEGRITY: High

AUTHENTICITY: High

CONDITION: Poor

DESCRIPTION: A large volume space the equivalent of 1.5 storey's with a high pitched gable roof over the main space and a cat slide lean-to roof to the east. It was constructed for the purposes of baking. It has a loft door to the southern gable and brick construction ovens and flue to the north gabled end of the building.

ORIGINAL USE: Bakery

Later/ Current Use(s) Storage

HISTORICAL COMMENT: One of the very few surviving industrial buildings to remain in Coolgardie.

STATEMENT OF SIGNIFICANCE: Important as a rare example of industrial structures remaining intact.

CONSERVATION ACTION: Category 2

Photographs R Mitchell
Bibliography

COOLGARDIE MUNICIPAL INVENTORY

DATE OF ASSESSMENT:

LAST REVISION DATE:

Currently under repair

SITE No. 45

PREVIOUS LISTINGS

The National Trust W.A.
Heritage Council of W.A.
HCWA No.
The National Estate Listed
Local Authority

Recorded 27/10/76

TPS No. 4 Schedule V

Film No. 1 Neg. No. 20 Date: 19/1/95

PLACE NAME: Pavilion

Type of Place: Pavilion

Former or other Names: Exhibition Stand

Address: Lefroy Street (bowling club), Coolgardie

Map Ref.:

Lot/Location:

Diagram/Plan:

C/T: Vol/Follo

Reserve Details: 3256

Vesting: Shire of Coolgardie

Purpose:

OWNER NAME: Shire of Coolgardie

Owner contacted? (Y/N)

Address / Phone / Fax: Bayley Street, Coolgardie

Occupied (Y/N) Yes

Occupier Name: Coolgardie Bowling Club

Public Accessibility: Accessible

Mining Lease:

DATE BUILT: 1899

Source of Date: Exhibition material

ARCHITECT / DESIGNER / BUILDER:

HISTORIC THEME: Early suburban recreation and significant event (Coolgardie Exhibition)

CONSTRUCTION: Light timber frame with mini-orb profile cladding

INTEGRITY: Moderate

AUTHENTICITY: High

CONDITION: Fair

DESCRIPTION: A small timber framed structure clad in mini-orb and painted. Deep eaves bracketed off walls and a fascia decorated with a scalloped edge. The roof is a concave curve and would have had a decorative finial, since lost.

ORIGINAL USE: Pavilion

Later/ Current Use(s) Store

HISTORICAL COMMENT: One of the only structures built for sporting / recreation activities left from the Gold boom period. The building had its origins in the Exhibition of 1899 when it was reputedly brought from France as an exhibition stand. In 1903 it became the property of the Bowling Club.

STATEMENT OF SIGNIFICANCE: Significant for its architectural construction and interest.

CONSERVATION ACTION: Category 2

Photographs
Bibliography

COOLGARDIE MUNICIPAL INVENTORY

DATE OF ASSESSMENT:

LAST REVISION DATE:



SITE No. 46

PREVIOUS LISTINGS

The National Trust W.A.
Heritage Council of W.A.
HCWA No.
The National Estate Listed
Local Authority

Classified 08/11/76

0571

Listed 21/3/78

Film No. 1 Neg. No. 35 Date: 27/7/2012

PLACE NAME: YHA Hostel

Type of Place: House

Former or other Names: Railway Barracks and Goldfields Water Supply manager's house

Address: 56 – 60 Hunt Street, Coolgardie

Map Ref.:

Lot/Location: 2111

Diagram/Plan: D74381

C/T: Vol/Folio 1413/545

Reserve Details: 30560

Vesting: Youth Hostels Ass. Inc. Purpose: Recreation

OWNER NAME: M.E. Charlton

Owner contacted? (Y/N)

Address / Phone / Fax: Box 55 Coolgardie

Occupied (Y/N) Yes

Occupier Name: check

Public Accessibility: Accessible

Mining Lease:

DATE BUILT: 1899

Source of Date: Known

ARCHITECT / DESIGNER / BUILDER: John Grainger

HISTORIC THEME: Transport and Railways

CONSTRUCTION: Single storey brick and stucco building with a broken back corrugated iron roof and wide verandahs.

INTEGRITY: High

AUTHENTICITY: High

CONDITION: Good

DESCRIPTION: Originally the Goldfields Water Supply manager's house it became part of the railway establishment. A representative architectural form for a large residential building from the turn of the century. It has paneled doors, double hung sash windows and a simply detailed verandah which is now missing some elements.

ORIGINAL USE: Residential

Later/ Current Use(s) Hostel

HISTORICAL COMMENT: The house began life as the house for the Manager of the Goldfields Water Supply and later became a part of the railway building complex which was a vital communications and transport link for this isolated town. This building accommodated the lower ranked railway workers. In 1968 it was taken over by the YHA.

STATEMENT OF SIGNIFICANCE: An integral part of this important complex of railway buildings that was vital to the development and history of the Eastern Goldfields.

CONSERVATION ACTION: Category 2

Photographs Rose Mitchell
Bibliography

COOLGARDIE MUNICIPAL INVENTORY

DATE OF ASSESSMENT:

LAST REVISION DATE:



SITE No. 47

PREVIOUS LISTINGS

The National Trust W.A.
Heritage Council of W.A.
HCWA No.
The National Estate Listed
Local Authority

Film No Neg. No. Date: 27/7/2012

PLACE NAME:

Type of Place: House

Former or other Names: Church of England Manse

Address: 74 Lindsay Street, Coolgardie

Map Ref.:

Lot/Location: 377-378

Diagram/Plan:

C/T: Vol/Follo

Reserve Details:

Vesting:

Purpose:

OWNER NAME: MJ. Campisi

Owner contacted? (Y/N)

Address / Phone / Fax: 74 Lindsay Street, Coolgardie

Occupied (Y/N) Y

Occupier Name: Owner

Public Accessibility: N

Mining Lease:

DATE BUILT: c1901

Source of Date: Estimate

ARCHITECT / DESIGNER / BUILDER:

HISTORIC THEME: Religious building

CONSTRUCTION: Framed walls with ripple iron cladding and iron roof.

INTEGRITY: High

AUTHENTICITY: High

CONDITION: Fair

DESCRIPTION: A large rectangular plan symmetrically planned house with a wide verandah surrounding three sides. It has a hipped roof with gables facing all directions. The front entry is a grand scale affair flanked by sidelights. Windows are side hung casements and all the walls are clad in ripple iron.

ORIGINAL USE: Manse

Later/ Current Use(s) House

HISTORICAL COMMENT: the Church of England, also a framed building, was destroyed by a storm and the manse is the survivor of this complex. It is a substantial and imposing framed structure.

STATEMENT OF SIGNIFICANCE: Important as a pleasing composition and with historic associations with the early days of the Church of England in Coolgardie.

CONSERVATION ACTION: Category 2

Photographs Rose Mitchell
Bibliography

COOLGARDIE MUNICIPAL INVENTORY

DATE OF ASSESSMENT:

LAST REVISION DATE:



SITE No. 48

PREVIOUS LISTINGS

The National Trust W.A.
Heritage Council of W.A.
HCWA No.
The National Estate Listed
Local Authority

Film No. Neg. No. Date: 27/7/2012

PLACE NAME:

Type of Place: House

Former or other Names:

Address: 82 Lindsay Street, Coolgardie

Map Ref.:

Lot/Location: 363

Diagram/Plan:

C/T: Vol/Follo

Reserve Details:

Vesting:

Purpose:

OWNER NAME: S.C.Oliver

Owner contacted? (Y/N)

Address / Phone / Fax: 82 Lindsay Street, Coolgardie

Occupied (Y/N) Y

Occupier Name: Owner

Public Accessibility: N

Mining Lease:

DATE BUILT: c1900

Source of Date: Estimate

ARCHITECT / DESIGNER / BUILDER:

HISTORIC THEME: Gold boom suburban settlement

CONSTRUCTION: Timber framed and all iron clad

INTEGRITY: Moderate

AUTHENTICITY: High

CONDITION: Fair

DESCRIPTION: A complex composition of minor structures in typical goldfields framed style and organization with a W shaped roof over the front portion of the house and a separate kitchen structure.

ORIGINAL USE: House

Later/ Current Use(s) House

HISTORICAL COMMENT: An example of a house developed over time using modest materials and detailing resulting in a rich aesthetic.

STATEMENT OF SIGNIFICANCE: An important part of a minor precinct centered on the St Joseph's Convent.

CONSERVATION ACTION: Category 2

Photographs Rose Mitchell

Bibliography

COOLGARDIE MUNICIPAL INVENTORY

DATE OF ASSESSMENT:

LAST REVISION DATE:

No longer existing

SITE No. 49

PREVIOUS LISTINGS
The National Trust W.A.
Heritage Council of W.A.
HCWA No.
The National Estate Listed
Local Authority

Film No. 2 Neg. No. 22 Date: 26/2/95

PLACE NAME:

Type of Place: House

Former or other Names:

Address: 89 Lindsay Street, Coolgardie

Map Ref.:

Lot/Location: 181

Diagram/Plan:

C/T: Vol/Follo

Reserve Details:

Vesting:

Purpose:

OWNER NAME: Christian Aboriginal Parents Directed School

Owner contacted? (Y/N)

Address / Phone / Fax: CAPS Lindsay Street, Coolgardie

Occupied (Y/N) Y

Occupier Name:

Public Accessibility: N

Mining Lease:

DATE BUILT: c1900

Source of Date: Estimate

ARCHITECT / DESIGNER / BUILDER:

HISTORIC THEME: Gold boom suburban settlement

CONSTRUCTION: Timber framed and all iron clad with some fibro sheeting.

INTEGRITY: High

AUTHENTICITY: High

CONDITION: Fair

DESCRIPTION: A simple form house with simple detailing corrugated iron clad house with a bull nosed verandah that is partly enclosed with louvered windows and fibro sheeting.

ORIGINAL USE: House

Later/ Current Use(s) House

HISTORICAL COMMENT: A typical modest goldfields dwelling

STATEMENT OF SIGNIFICANCE: This house demonstrates a modest way of life and bush carpentry together with a variety of adaptations. It has streetscape value.

CONSERVATION ACTION: Category 2

Photographs
Bibliography

COOLGARDIE MUNICIPAL INVENTORY

DATE OF ASSESSMENT:

LAST REVISION DATE:



SITE No. 50

PREVIOUS LISTINGS

The National Trust W.A.
Heritage Council of W.A.
HCWA No.
The National Estate Listed
Local Authority

Classified 27/10/76

0576

Listed 21/3/78

TPS No. 4 Schedule V

Film No. Neg. No. Date: 27/7/2012

PLACE NAME: St Mary's Roman Catholic Church

Type of Place: Church

Former or other Names:

Address: 71 Lindsay Street, Coolgardie

Map Ref.:

Lot/Location: 139/140

Diagram/Plan:

C/T: Vol/Folio 99/95

Reserve Details:

Vesting:

Purpose:

OWNER NAME: Roman Catholic Archbishop of Perth

Owner contacted? (Y/N)

Address / Phone / Fax: Victoria Square, Perth

Occupied (Y/N) Yes

Occupier Name: Roman Catholic Church

Public Accessibility: Accessible

Mining Lease:

DATE BUILT: 1902

Source of Date: Known. Foundation Stone

ARCHITECT / DESIGNER / BUILDER: Architects: M.E. & J.C. Cavanagh / Builder: J. Millington

HISTORIC THEME: Religious

CONSTRUCTION: Tuck pointed brick with stucco buttress tops, strings and quoins to windows with a steep pitched iron roof, leadlight windows and slate door sills.

INTEGRITY: High

AUTHENTICITY: High

CONDITION: Good

DESCRIPTION: This building replaced an earlier timber framed, iron clad, unlined church from 1892. The current buildings replaced it in 1902. Designed in the gothic style typical for churches of all denominations at this time, it is a well built brick building with a simple auditory plan and a polygonal chancel, stucco dressings and corrugated iron roof. Still in use.

ORIGINAL USE: Church

Later/ Current Use(s) Church

HISTORICAL COMMENT: The most substantial ecclesiastical building constructed at the height of Coolgardie's prosperity. Designed by Michael Cavanagh, a prominent Perth architect who practiced from 1895-1935, designed many of the Catholic Church's building in W.A. at this time as well as many commercial, civic, residential buildings.

STATEMENT OF SIGNIFICANCE: A well complete building representative of church buildings of the turn of the century. Connected with the early history of the State and the era's most influential catholic architects.

CONSERVATION ACTION: Category 1

Photographs Rose Mitchell
Bibliography

COOLGARDIE MUNICIPAL INVENTORY

DATE OF ASSESSMENT:

LAST REVISION DATE:

No Longer there has been
demolished and a
kindergarten has replaced it

SITE No. 51

PREVIOUS LISTINGS

The National Trust W.A.

Classified 27/10/76

Heritage Council of W.A.

HCWA No.

0575

The National Estate Listed

Local Authority

TPS No. 4 Schedule V

Film No. 1 Neg. No. 22 Date: 19/1/95

PLACE NAME: Masonic Hall

Type of Place: Lodge

Former or other Names:

Address: 84 Lindsay Street, Coolgardie

Map Ref.:

Lot/Location: 362

Diagram/Plan:

C/T: Vol/Folio 81/45

Reserve Details:

Vesting:

Purpose:

OWNER NAME: CAPS

Owner contacted? (Y/N)

Address / Phone / Fax Occupied (Y/N) No

Occupier Name: CAPS Pre school

Public Accessibility: Nil

Mining Lease:

DATE BUILT: 1895

Source of Date: Known

ARCHITECT / DESIGNER / BUILDER:

HISTORIC THEME: Masonic movement

CONSTRUCTION: Brick quoins with pillowed ashlar local sandstone infill, concrete colonnaded portico and iron roof.

INTEGRITY: Moderate

AUTHENTICITY: High / Mod.

CONDITION: Poor

DESCRIPTION: Sandstone building with brick quoins, originally with a pitched corrugated iron roof since replaced by a flat roof in a modern metal profile. The building is a classical composition of 3 bays with a masonry arched portico supported by two dimple tapered columns and a barrel vaulted corrugated galvanized iron roof linked to the building.

ORIGINAL USE: Lodge

Later/ Current Use(s) Vacant

HISTORICAL COMMENT: A building no longer in use but with important historical and social associations with the life of the town in the gold boom period. It once had a formal garden leading via a hedge lined path to the entry portico.

STATEMENT OF SIGNIFICANCE: This building is important in illustrating the growth and social significance of the Masonic movement and its eventual decline in strength.

CONSERVATION ACTION: Category 2

Photographs

Bibliography

COOLGARDIE MUNICIPAL INVENTORY

DATE OF ASSESSMENT:

LAST REVISION DATE:



SITE No. 52

PREVIOUS LISTINGS

The National Trust W.A.

Recorded 27/10/76

Heritage Council of W.A.

HCWA No.

0574

The National Estate Listed

Local Authority

Film No. Neg. No. Date: 27/7/2012

PLACE NAME: Convent School

Type of Place: School

Former or other Names:

Address: 87 Lindsday Street, Coolgardie

Map Ref.:

Lot/Location: 182

Diagram/Plan:

C/T: Vol/Follo

Reserve Details:

Vesting:

Purpose:

OWNER NAME: Christian Aboriginal Parent Directed School

Owner contacted? (Y/N)

Address / Phone / Fax: PO Box 28, Coolgardie

Occupied (Y/N) Y

Occupier Name: Owner

Public Accessibility: Yes

Mining Lease:

DATE BUILT: c1900

Source of Date: Estimate

ARCHITECT / DESIGNER / BUILDER:

HISTORIC THEME: School room and hall

CONSTRUCTION: Timber framed construction. Walls and roof clad with iron.

INTEGRITY: High

AUTHENTICITY: Moderate

CONDITION: Fair

DESCRIPTION: A simple gabled hall with entry porch and some minor creations that is clearly identifiable an ecclesiastical building.

ORIGINAL USE: School Room

Later/ Current Use(s) Hall

HISTORICAL COMMENT: An early example of an education and multi-use hall.

STATEMENT OF SIGNIFICANCE: Significant as an integral part of the convent school and a typical goldfields structure.

CONSERVATION ACTION: Category 1

Photographs Rose Mitchell

Bibliography

COOLGARDIE MUNICIPAL INVENTORY

DATE OF ASSESSMENT:

LAST REVISION DATE:



SITE No. 53

PREVIOUS LISTINGS

The National Trust W.A.
Heritage Council of W.A.
HCWA No.
The National Estate Listed
Local Authority

Classified 5/8/68
Registered 1/6/94
0573
Listed 21/3/78
TPS No. 4 Schedule V

Film No. Neg. No. Date: 27/7/2012

PLACE NAME: Christian Aboriginal Parent – Directed School

Type of Place: Boarding School

Former or other Names: St Anthony's Convent of Mercy

Address: Lindsay Street, Coolgardie

Map Ref.:

Lot/Location: 179 - 183

Diagram/Plan:

C/T: Vol/Folio 1081/143 1678/685

Reserve Details:

Vesting:

Purpose:

OWNER NAME: Christian Aboriginal Parent – Directed School

Owner contacted? (Y/N)

Address / Phone / Fax: PO Box 28, Coolgardie

Occupied (Y/N) Y

Occupier Name: Christian Aboriginal Parent – Directed School

Public Accessibility: Nil

Mining Lease: N/A

DATE BUILT: 1903

Source of Date: Known, Foundation Stone

ARCHITECT / DESIGNER / BUILDER: Architect: Michael Cavanagh, Builder: O'Donnell

HISTORIC THEME: Federation Freestyle

CONSTRUCTION: Two storey red tuck pointed brick, corrugated iron roof, two large slightly projecting gables and decorative stucco moldings and string courses to façade.

INTEGRITY: High

AUTHENTICITY: High

CONDITION: Fair

DESCRIPTION: The school has a broad symmetrical façade, in which the weighty details of the central bay are balanced by two slightly projecting gabled wings. The central entrance door has a small frieze with the words "Convent of Mercy" and a shallow central gable. The gabled wings have two storey bay windows with semi circular parapets, circular molded air vents and are topped with masonry crosses. The building has a steeply pitched corrugated iron roof with a timber verandah to the rear and sides.

ORIGINAL USE: Convent school

Later/ Current Use(s) Boarding school

HISTORICAL COMMENT: This school was run by the Sisters of Mercy for 75 years, it was the only boarding school on the Goldfields. No discrimination was made on the basis of religious denomination. Cavanagh, a prominent Perth architect from 1895-1935, designed many of the Catholic Church's building in W.A. at this time as well as many commercial, civic, residential buildings.

STATEMENT OF SIGNIFICANCE: The place has historic significance related to the important role of education in the history of the Goldfields and contributes to the sense of place and identity of Coolgardie, a key town in the development of gold mining in W.A. in the 1890s. The building is a simple, understated but visually impressive example of Federation Free Style applied to an educational building and is representative of the work of prominent Perth architect M. Cavanagh from 1895 – 1938.

CONSERVATION ACTION: Category 1

Photographs Rose Mitchell
Bibliography

COOLGARDIE MUNICIPAL INVENTORY

DATE OF ASSESSMENT:

LAST REVISION DATE:



SITE No. 54

PREVIOUS LISTINGS

The National Trust W.A.
Heritage Council of W.A.
HCWA No.
The National Estate Listed
Local Authority

Film No. Neg. No. Date: 27/7/2012

PLACE NAME: Fire Station

Type of Place: Public Services

Former or other Names:

Address: Sylvester Street, Coolgardie

Map Ref.:

Lot/Location: 133-134

Diagram/Plan:

C/T: Vol/Follo

Reserve Details: 2509

Vesting:

Purpose:

OWNER NAME: Fire Brigades Board of WA

Owner contacted? (Y/N)

Address / Phone / Fax: GPO Box P1174, PERTH

Occupied (Y/N)

Occupier Name: Fire Brigade

Public Accessibility: N

Mining Lease:

DATE BUILT: c1910 - 1988

Source of Date: Estimate

ARCHITECT / DESIGNER / BUILDER:

HISTORIC THEME: Public Services

CONSTRUCTION: Timber framed and iron clad

INTEGRITY: High

AUTHENTICITY: High

CONDITION: Good

DESCRIPTION: This is a replacement building and the engine house is constructed in timber frame with painted iron cladding. It is a simple gable roofed structure with the name fire station appearing in the gable. It is an elegant utilitarian structure.

ORIGINAL USE: Fire Station

Later/ Current Use(s) Fire Station

HISTORICAL COMMENT: A structure of great importance to Coolgardie considering the significant role played by fire in the early days of Coolgardie's existence, with its repeated destruction or partial destruction by fire.

STATEMENT OF SIGNIFICANCE: An important structure representing a vial service in the early history of Coolgardie.

CONSERVATION ACTION: Category 2

Photographs Rose Mitchell
Bibliography

COOLGARDIE MUNICIPAL INVENTORY

DATE OF ASSESSMENT:

LAST REVISION DATE:



SITE No. 55

PREVIOUS LISTINGS

The National Trust W.A.
Heritage Council of W.A.
HCWA No.
The National Estate Listed
Local Authority

Recorded 27/10/76

0572

TPS No. 4 Schedule V

Film No. Neg. No. Date: 27/7/2012

PLACE NAME: Health Centre and trees

Type of Place: Hospital

Former or other Names: Coolgardie Hospital

Address: Wilkie Street, Coolgardie

Map Ref.:

Lot/Location: 2101

Diagram/Plan:

C/T: Vol/Follo

Reserve Details: 2908

Vesting:

Purpose:

OWNER NAME: West Australian Department of Health

Owner contacted? (Y/N)

Address / Phone / Fax: 189 Royal Street, East Perth

Occupied (Y/N) Yes

Occupier Name: Coolgardie Health Centre

Public Accessibility: Yes

Mining Lease:

DATE BUILT: 1897

Source of Date: Estimate

ARCHITECT / DESIGNER / BUILDER:

HISTORIC THEME: Public Services

CONSTRUCTION: Brick, stone and timber framed structures with iron roofs.

INTEGRITY: Moderate

AUTHENTICITY: Mod/High

CONDITION: Good

DESCRIPTION: A cottage hospital with multiple additions in sympathy with the early structures resulting in an elegant accumulation of modest utilitarian structures.

ORIGINAL USE: Hospital

Later/ Current Use(s) Health Centre

HISTORICAL COMMENT: Coolgardie's government hospital building survives; many others have perished. It is important as a representative type that demonstrates a commitment of government to the Public Hospital System, in a year when there was considerable expenditure on government hospitals. The first St John of God's hospital was also in Coolgardie.

STATEMENT OF SIGNIFICANCE: Important as a part of the Coolgardie story reflecting the commitment of the state to provide regional services.

CONSERVATION ACTION: Category 2

Photographs Rose Mitchell

Bibliography Webb, Martin and Audrey, the Centennial History of Kalgoorlie-Boulder 1993

COOLGARDIE MUNICIPAL INVENTORY

DATE OF ASSESSMENT:

LAST REVISION DATE:



SITE No. 56

PREVIOUS LISTINGS

The National Trust W.A.
Heritage Council of W.A.
HCWA No.
The National Estate Listed
Local Authority

Film No. Neg. No. Date: 27/7/2012

PLACE NAME: Finnerty's Dam

Type of Place: Natural Feature

Former or other Names: Coola Garbi Gnamma Hole

Address: Hunt Street, Coolgardie

Map Ref.:

Lot/Location:

Diagram/Plan:

C/T: Vol/Follo

Reserve Details: 2289

Vesting: National Trust

Purpose:

OWNER NAME: National Trust of Australia

Owner contacted? (Y/N)

Address / Phone / Fax: Havelock Street, West Perth

Occupied (Y/N) N

Occupier Name:

Public Accessibility: Y

Mining Lease:

DATE BUILT:

Source of Date:

ARCHITECT / DESIGNER / BUILDER:

HISTORIC THEME: Water supply and historic site

CONSTRUCTION: A natural feature enlarged by blasting surrounded by a chain link fence.

INTEGRITY: Moderate

AUTHENTICITY: Moderate

CONDITION: Good

DESCRIPTION: An enlarged Gnamma hole with a role in the town water supply; also the mark at which the town was declared by Warden Finnerty in October 30, 1892.

ORIGINAL USE: Water hole

Later/ Current Use(s) Historic site

HISTORICAL COMMENT: Important in the story of Coolgardie as a source of water and the location of the ceremony to celebrate the declaration of the town.

STATEMENT OF SIGNIFICANCE: A historically important site with Aboriginal significance.

CONSERVATION ACTION: Category 2

Photographs Rose Mitchell
Bibliography

COOLGARDIE MUNICIPAL INVENTORY

DATE OF ASSESSMENT:

LAST REVISION DATE:



SITE No. 57

PREVIOUS LISTINGS

The National Trust W.A.
Heritage Council of W.A.
HCWA No.
The National Estate Listed
Local Authority

Classified 27/10/94
Permanent 5/5/92
0577
Listed 21/3/78
TPS No. 4 Schedule V

Film No. 1 Neg. No. 27 Date: 19/1/95

PLACE NAME: Warden Finnerty's House

Type of Place: House

Former or other Names:

Address: 2 McKenzie Street (fmr Hunt St) Coolgardie

Map Ref.:

Lot/Location: 2048

Diagram/Plan: D 56695

C/T: Vol/Folio CL 692/1934

Reserve Details:

Vesting:

Purpose:

OWNER NAME: National Trust of Australia (WA)

Owner contacted? (Y/N)

Address / Phone / Fax: PO Box 1162, West Perth WA

Occupied (Y/N) Yes

Occupier Name: National Trust

Public Accessibility: Accessible

Mining Lease:

DATE BUILT: 1895

Source of Date: Estimate

ARCHITECT / DESIGNER / BUILDER: Robert Bunning Bldr

HISTORIC THEME: Local Government Residence

CONSTRUCTION: Coursed random rubble sandstone walls, brick quoins with timber verandahs to most sides and elaborate timberwork and joinery, Separate Kitchen.

INTEGRITY: High

AUTHENTICITY: High

CONDITION: Good

DESCRIPTION: A large single storey house demonstrating the taste and style of an imposing residence of the 1890s. It has stone walls with brick quoins, elaborate joinery to the gables, doors and windows and an iron roof. The building responds to the hot, dry climate with generous protective verandahs on most sides, louvered timber shutters to the full height of the windows and a separate kitchen and ventilated roof lantern.

ORIGINAL USE: House

Later/ Current Use(s) House / museum

HISTORICAL COMMENT: Constructed for Warden Finnerty, the first warden of Coolgardie (from 1893), who was moved from Southern Cross when the Yilgarn goldfields were superseded by those at Coolgardie.

STATEMENT OF SIGNIFICANCE: This building, the only one of its type surviving in Coolgardie, is historically significant in being the former residence of the local mining warden. The house is architecturally significant for the way it reflects the purpose for which it was built and for its distinctive design features, some of which later became much more widely used.

CONSERVATION ACTION: Category 2

Photographs

Bibliography

COOLGARDIE MUNICIPAL INVENTORY

DATE OF ASSESSMENT:

LAST REVISION DATE:



SITE No. 58

PREVIOUS LISTINGS

The National Trust W.A.
Heritage Council of W.A.
HCWA No.
The National Estate Listed
Local Authority

Classified 27/10/76

0580

Listed 21/3/78

TPS No.4 Schedule V

Film No. Neg. No. Date: 27/7/2012

PLACE NAME: House and Trees 1897

Type of Place: House

Former or other Names: Water Supply Office

Address: 80 Taylor Street, Coolgardie

Map Ref.:

Lot/Location: 2043

Diagram/Plan: D44104

C/T: Vol/Follo 1634/376

Reserve Details:

Vesting:

Purpose:

OWNER NAME: D.A. Oliver

Owner contacted? (Y/N)

Address / Phone / Fax: 80 Taylor Street, Coolgardie

Occupied (Y/N) Yes

Occupier Name: Owner

Public Accessibility: Nil

Mining Lease:

DATE BUILT: 1897

Source of Date: Known, written on pediment.

ARCHITECT / DESIGNER / BUILDER: John Grainger Architect

HISTORIC THEME: Government Services and water supply.

CONSTRUCTION: Single storey sandstone building with brick quoins and a hipped iron roof behind a parapet and bull nosed verandahs and an arched portico.

INTEGRITY: High

AUTHENTICITY: High

CONDITION: Good

DESCRIPTION: A large single storey building of domestic character with coursed random rubble sandstone walls with brick quoins, stucco parapets and a entrance portico with arched openings and a stucco pediment with the words 'Mines Water Supply Office 1897' in raised letters. The roof is of corrugated iron and wide verandahs surround most of the building. The original timber post and chain-link fence remain as well as several large gum trees.

ORIGINAL USE: Office residential

Later/ Current Use(s) House

HISTORICAL COMMENT: Built in 1897 to house the needs of the resident water supply staff, it is an integral part of the management of the ambitious Mundaring to Kalgoorlie pipeline designed by John Grainger, of the Public Works Department and built between 1892 and 1902.

STATEMENT OF SIGNIFICANCE: A substantial building of architectural significance which demonstrates an indigenous approach to a building of former administrative importance and linked to the historic Mundaring to Coolgardie Pipeline.

CONSERVATION ACTION: Category 1

Photographs Rose Mitchell

Bibliography

COOLGARDIE MUNICIPAL INVENTORY

DATE OF ASSESSMENT:

LAST REVISION DATE:



SITE No. 59

PREVIOUS LISTINGS

The National Trust W.A.
Heritage Council of W.A.
HCWA No.
The National Estate Listed
Local Authority

Classified 27/10/76
Interim entry 5/5/92
0579
Listed 21/3/78
TPS No. 4 Schedule V

Film No. Neg. No Date: 27/7/2012

PLACE NAME: Primary School

Type of Place: School

Former or other Names:

Address: Hunt Street / Shaw Street cnr, Coolgardie

Map Ref.:

Lot/Location: 567

Diagram/Plan:

C/T: Vol/Follo

Reserve Details: 3034

Vesting: Dept. Land Admin.

Purpose: School Site

OWNER NAME: Check

Owner contacted? (Y/N)

Address / Phone / Fax:

Occupied (Y/N) Yes

Occupier Name:

Public Accessibility: Accessible

Mining Lease:

DATE BUILT: 1897

Source of Date: Known

ARCHITECT / DESIGNER / BUILDER: Architect: G.T. Poole / Builder: Phillip and Royal

HISTORIC THEME: Education

CONSTRUCTION: Stone walls with brick quoins, corrugated iron roof and a surrounding timber framed verandah.

INTEGRITY: High

AUTHENTICITY: High

CONDITION: Good

DESCRIPTION: The school has rough finished, random coursed stone walls with brick quoins, a corrugated iron roof and a surrounding verandah for weather protection. The building is rectangular and has seven rooms. The verandah construction has been modified and the roof is also a replacement. Windows are double hung casements with stucco lintels and sills.

ORIGINAL USE: School

Later/ Current Use(s) Primary School

HISTORICAL COMMENT: This building was the first permanent school structure in the Eastern Goldfields. George Temple Poole, one of the colony's most influential architects, designed the school when he was Superintendent of the Public Works Department and Colonial Architect from 1891 – 1896.

STATEMENT OF SIGNIFICANCE: A stone school of great historical significance and cultural importance, being the first permanent government school in the town and still in use. It is also of architectural significance as an example of the architecture of George Temple Poole and his adaption of school building design for the hot climate.

CONSERVATION ACTION: Category 1

Photographs Rose Mitchell
Bibliography

COOLGARDIE MUNICIPAL INVENTORY

DATE OF ASSESSMENT:

LAST REVISION DATE:



SITE No. 60

PREVIOUS LISTINGS

The National Trust W.A.
Heritage Council of W.A.
HCWA No.
The National Estate Listed
Local Authority

Classified 27/10/76

0581

Listed 21/3/78

TPS No. 4 Schedule V

Film No. Neg. No. Date: 27/7/2012

PLACE NAME: Museum

Type of Place: Transport terminus

Former or other Names: Railway Station and Goods Shed

Address: 75 – 87 Woodward Street, Coolgardie

Map Ref.:

Lot/Location: 2700

Diagram/Plan: D 84712

C/T: Vol/Follo

Reserve Details: 30560

Vesting: Shire of Coolgardie

Purpose: Museum site and shire

OWNER NAME: Shire of Coolgardie

Owner contacted? (Y/N)

Address / Phone / Fax: Bayley Street, Coolgardie

Occupied (Y/N) Yes

Occupier Name:

Public Accessibility: Accessible

Mining Lease:

DATE BUILT: 1896

Source of Date: known

ARCHITECT / DESIGNER / BUILDER: Architect: George Temple Poole

HISTORIC THEME: Railways / transport

CONSTRUCTION: Station: painted brick and stone, gabled corrugated iron roof.
Goods Shed: standard pattern framed and corrugated iron clad

INTEGRITY: High

AUTHENTICITY: Moderate

CONDITION: Good

DESCRIPTION: A stone and brick quoin station building with a hipped iron roof similar in design and details to other railway stations of this period in the State. The façade is divided into 3 bays, the central bay with a pediment and arch and a hipped iron verandah over the entry. Later accretions have been arranged symmetrically. The goods shed is a simple timber framed iron clad industrial building with evidence of its earlier color scheme of cream and deep Indian red.

ORIGINAL USE: Station and Goods Shed

Later/ Current Use(s) Museum and storage

HISTORICAL COMMENT: A building of substance, conforming to the character of railway buildings of the turn of the century and part of an important but now defunct communication and transport system for this isolated town. The station has many similarities to Bunbury Station.

STATEMENT OF SIGNIFICANCE: A good example of a substantial country railway station and goods shed complex. They are an integral part of this important complex of railway buildings in Coolgardie that were vital to the development and history of the Eastern Goldfields.

CONSERVATION ACTION: Category 1

Photographs Rose Mitchell
Bibliography

COOLGARDIE MUNICIPAL INVENTORY

DATE OF ASSESSMENT:

LAST REVISION DATE:



SITE No. 61

PREVIOUS LISTINGS

The National Trust W.A.
Heritage Council of W.A.
HCWA No.
The National Estate Listed
Local Authority

Classified 27/10/76

1735

Listed 21/3/76

TPS No. 4 Schedule V

Film No. Neg. No. Date: 23/7/2012

PLACE NAME: House

Type of Place: House

Former or other Names:

Address: 103 Woodward Street, Coolgardie

Map Ref.:

Lot/Location: 2129

Diagram/Plan:

C/T: Vol/Follo 1871/346

Reserve Details:

Vesting:

Purpose:

OWNER NAME: E.M. Thomas

Owner contacted? (Y/N)

Address / Phone / Fax: 103 Woodward Street, Coolgardie

Occupied (Y/N) Yes

Occupier Name: Owner

Public Accessibility: Nil

Mining Lease:

DATE BUILT: 1896

Source of Date: known

ARCHITECT / DESIGNER / BUILDER:

HISTORIC THEME: Early settlement / Gold boom

CONSTRUCTION: Coursed rubble walls with gabled iron roof and iron clad rear acretions.

INTEGRITY: High

AUTHENTICITY: High

CONDITION: Good

DESCRIPTION: Stone cottage with corrugated iron roof built in 1896 by the Railway Authority for railway employees. A simple rectangular building with gabled roof, 5 rooms plus weatherboard additions at the back. (AHC)

ORIGINAL USE: House

Later/ Current Use(s) House

HISTORICAL COMMENT: A part of the railway building complex which was a vital communications and transport link for this isolated town. This building accommodated a higher ranked railway worker and his family.

STATEMENT OF SIGNIFICANCE: Part of a group of railway houses with 105 and 107 Woodward Street, but a larger example. The group demonstrates a particular style in building, one of substance and permanence compared to the bulk of timber framed corrugated iron clad housing in the town. They are an integral part of this important complex of railway buildings in Coolgardie that were vital to the development and history of the Eastern Goldfields.

CONSERVATION ACTION: Category 2

Photographs Rose Mitchell

Bibliography

COOLGARDIE MUNICIPAL INVENTORY

DATE OF ASSESSMENT:

LAST REVISION DATE:



SITE No. 62

PREVIOUS LISTINGS

The National Trust W.A.
Heritage Council of W.A.
HCWA No.
The National Estate Listed
Local Authority

Classified 27/10/76

1738

Listed

TPS No. 4 Schedule V

Film No. Neg. No. Date: 23/7/2012

PLACE NAME: House and Two Pepper Trees

Type of Place: Small House

Former or other Names:

Address: 105 Shaw Street, Coolgardie

Map Ref.:

Lot/Location: 2128

Diagram/Plan:

C/T: Vol/Folio 1764/930

Reserve Details:

Vesting:

Purpose:

OWNER NAME: T. Sholson

Owner contacted? (Y/N)

Address / Phone / Fax: 105 Woodward Street, Coolgardie

Occupied (Y/N) Yes

Occupier Name: Owner

Public Accessibility: Nil

Mining Lease:

DATE BUILT: 1896

Source of Date: known

ARCHITECT / DESIGNER / BUILDER:

HISTORIC THEME: Early railway workers houses / Gold boom

CONSTRUCTION: Stone walls with iron roof.

INTEGRITY: High

AUTHENTICITY: High

CONDITION: Good

DESCRIPTION: One of three houses for railway employees built in Woodward Street in a distinctive style using local stone and corrugated iron roof. A simple, 3 room, rectangular building with a gabled roof and weatherboard clad additions to the rear. There are 2 large pepper trees at the front of the block.

ORIGINAL USE: Railway House

Later/ Current Use(s) House

HISTORICAL COMMENT: A part of the railway building complex which was a vital communications and transport link for this isolated town. This building accommodated a higher ranked railway worker's family.

STATEMENT OF SIGNIFICANCE: The group demonstrates a particular style in building, of substance and permanence compared to the bulk of timber framed corrugated iron clad housing in the town. They are an integral part of this important complex of railway buildings in Coolgardie that were vital to the development and history of the Eastern Goldfields.

CONSERVATION ACTION: Category 2

Photographs Rose Mitchell

Bibliography

COOLGARDIE MUNICIPAL INVENTORY

DATE OF ASSESSMENT:

LAST REVISION DATE:



SITE No. 63

PREVIOUS LISTINGS

The National Trust W.A.
Heritage Council of W.A.
HCWA No.
The National Estate Listed
Local Authority

Classified 27/10/76

1738

Listed

TPS No. 4 Schedule V

Film No. Neg. No. Date: 3/7/2012

PLACE NAME: House and Morton Bay Fig Tree

Type of Place: House

Former or other Names:

Address: 107 Woodward Street, Coolgardie

Map Ref.:

Lot/Location: 2127

Diagram/Plan:

C/T: Vol/Follo

Reserve Details:

Vesting:

Purpose:

OWNER NAME: P Privett

Owner contacted? (Y/N)

Address / Phone / Fax: 107 Woodward Street, Coolgardie

Occupied (Y/N) Yes

Occupier Name: Owner

Public Accessibility: Nil

Mining Lease:

DATE BUILT: 1896

Source of Date: Known

ARCHITECT / DESIGNER / BUILDER:

HISTORIC THEME: Early railway workers house / Gold boom

CONSTRUCTION: Local sandstone walls and corrugated iron roof and additions to rear.

INTEGRITY: High

AUTHENTICITY: High

CONDITION: Good

DESCRIPTION: One of three houses built for railway employees in Woodward Street. Simple rectangular, stone, 3 room building with gabled, corrugated iron roof and timber framed, iron clad additions. There is a very large moreton bay fig tree in the back garden.

ORIGINAL USE: Railway house

Later/ Current Use(s) House

HISTORICAL COMMENT: A part of the railway building complex which was a vital communications and transport link for this isolated town. This building accommodated a higher ranked railway worker and his family.

STATEMENT OF SIGNIFICANCE: The group demonstrates a particular style in building, of substance and permanence compared to the bulk of timber framed corrugated iron clad housing in town. They are an integral part of this important complex of railway buildings in Coolgardie that were vital to the development and history of the Eastern Goldfields.

CONSERVATION ACTION: Category 2

Photographs Rose Mitchell

Bibliography

COOLGARDIE MUNICIPAL INVENTORY

DATE OF ASSESSMENT:

LAST REVISION DATE:



SITE No. 64

PREVIOUS LISTINGS

The National Trust W.A.
Heritage Council of W.A.
HCWA No.
The National Estate Listed
Local Authority

Film No. Neg. No. Date: 23/7/2012

PLACE NAME:

Type of Place: House

Former or other Names:

Address: 82 Woodward Street, Coolgardie

Map Ref.:

Lot/Location: 153

Diagram/Plan:

C/T: Vol/Follo

Reserve Details:

Vesting:

Purpose:

OWNER NAME: Kevin Flynn

Owner contacted? (Y/N)

Address / Phone / Fax: 84 Woodward Street, Coolgardie

Occupied (Y/N) Y

Occupier Name:

Public Accessibility: N

Mining Lease:

DATE BUILT: 1890s

Source of Date: Estimate

ARCHITECT / DESIGNER / BUILDER:

HISTORIC THEME: Gold boom suburban settlement

CONSTRUCTION: Timber framed and iron

INTEGRITY: High

AUTHENTICITY: Moderate

CONDITION: Fair

DESCRIPTION: A framed gable roofed cottage with a bull nosed verandah and lace added in recent times, with timber paneled front door and double hung sash windows flanking the front door.

ORIGINAL USE: House

Later/ Current Use(s) House

HISTORICAL COMMENT: A small intact dwelling that sits in with the railway station

STATEMENT OF SIGNIFICANCE: A minor house that contributes to the railway station precinct.

CONSERVATION ACTION: Category 3

Photographs Rose Mitchell
Bibliography

COOLGARDIE MUNICIPAL INVENTORY

DATE OF ASSESSMENT:

LAST REVISION DATE:



SITE No. 65

PREVIOUS LISTINGS

The National Trust W.A.
Heritage Council of W.A.
HCWA No.
The National Estate Listed
Local Authority

Film No. Neg. No. Date: 23/7/2012

PLACE NAME:

Type of Place: House

Former or other Names:

Address: 62 Woodward Street, Coolgardie

Map Ref.:

Lot/Location: 111

Diagram/Plan:

C/T: Vol/Follo

Reserve Details:

Vesting:

Purpose:

OWNER NAME: W. J. Maloney

Owner contacted? (Y/N)

Address / Phone / Fax:

Occupied (Y/N) Y

Occupier Name:

Public Accessibility: N

Mining Lease:

DATE BUILT: 1890s

Source of Date: Estimate

ARCHITECT / DESIGNER / BUILDER:

HISTORIC THEME: Gold boom suburban Settlement

CONSTRUCTION: Timber framed and iron clad.

INTEGRITY: High

AUTHENTICITY: High

CONDITION: Fair

DESCRIPTION: A finely detailed minor gable roofed cottage with authentic details and almost completely iron clad walls. It has a ripple iron clad verandah infill.

ORIGINAL USE: House

Later/ Current Use(s) House

HISTORICAL COMMENT: A good example of the goldfields dwelling genre and fairly typical though more intact than many.

STATEMENT OF SIGNIFICANCE: Important of its completeness and for being relatively intact.

CONSERVATION ACTION: Category 2

Photographs Rose Mitchell

Bibliography

COOLGARDIE MUNICIPAL INVENTORY

DATE OF ASSESSMENT:

LAST REVISION DATE:



SITE No. 66

PREVIOUS LISTINGS

The National Trust W.A.
Heritage Council of W.A.
HCWA No.
The National Estate Listed
Local Authority

Classified 27/10/76

1737

Listed 21/3/78

TPS No. 4 Schedule V

Film No. Neg. No. Date: 27/7/2012

PLACE NAME: Peter Pan

Type of Place: House

Former or other Names: Leighton House

Address: 67 – 71 Forrest Street, Coolgardie

Map Ref.:

Lot/Location: 414 & 415

Diagram/Plan:

C/T: Vol/Folio 1779/752 & 753

Reserve Details:

Vesting:

Purpose:

OWNER NAME: W.F. and M.E. Moore

Owner contacted? (Y/N)

Address / Phone / Fax: 71 Forrest Street, Coolgardie

Occupied (Y/N) Yes

Occupier Name: Owner

Public Accessibility: Nil

Mining Lease:

DATE BUILT: 1890s

Source of Date: Estimate

ARCHITECT / DESIGNER / BUILDER:

HISTORIC THEME: Early settlement/gold boom

CONSTRUCTION: Brick quoins with coursed rubble infill, richly detailed with fine a roof featuring gables, finials and acroteria.

INTEGRITY: High

AUTHENTICITY: High

CONDITION: Fair

DESCRIPTION: A stone house with brick quoins and corrugated iron roof, featuring the generous verandah and general opulence of permanent buildings of the late 1890s; bought in 1903, by Samuel Roe. The front elevation is richly detailed with French windows, double hung windows and paneled doors. It is of a very similar design to that at 85 Shaw Street.

ORIGINAL USE: House

Later/ Current Use(s) House

HISTORICAL COMMENT: The house is associated with Samuel Roe, though not built for him. A.E. Thomas owned it for a time and named it Leighton House; it was later bought by Eric Seahill and renamed Peter Pan by him. It was also used as offices for Anaconda Mining for a time.

STATEMENT OF SIGNIFICANCE: One of the few surviving examples of the more opulent houses in Coolgardie.

CONSERVATION ACTION: Category 2

Photographs Rose Mitchell
Bibliography

COOLGARDIE MUNICIPAL INVENTORY

DATE OF ASSESSMENT:

LAST REVISION DATE:



SITE No. 67

PREVIOUS LISTINGS
The National Trust W.A.
Heritage Council of W.A.
HCWA No.
The National Estate Listed
Local Authority

Film No. Neg. No. Date: 27/7/2012

PLACE NAME:

Type of Place: House

Former or other Names:

Address: 77 Shaw Street, Coolgardie

Map Ref.:

Lot/Location: 368

Diagram/Plan:

C/T: Vol/Follo

Reserve Details:

Vesting:

Purpose:

OWNER NAME: R.E.Saviel

Owner contacted? (Y/N)

Address / Phone / Fax: C/- First National real estate kalgoorlie

Occupied (Y/N) Y

Occupier Name: TBA

Public Accessibility: N

Mining Lease:

DATE BUILT: 1890s

Source of Date: Estimate

ARCHITECT / DESIGNER / BUILDER:

HISTORIC THEME: Gold boom suburban settlement

CONSTRUCTION: Timber frame and fibro clad

INTEGRITY: Moderate

AUTHENTICITY: Moderate

CONDITION: Fair

DESCRIPTION: A modest workers cottage with simple detailing. Though the cladding has been replaced, the feel of the place remains, as does some of the detailing such as the external iron flues. Part of the verandah is now filled in. Several mature trees stand in the garden including pepper and olive trees.

ORIGINAL USE: House

Later/ Current Use(s) House

HISTORICAL COMMENT: A fair example of the goldfields type dwelling from the late 1890s

STATEMENT OF SIGNIFICANCE: A house that has streetscape value and is representative of a distinctive way of life.

CONSERVATION ACTION: Category 2

Photographs Rose Mitchell
Bibliography

COOLGARDIE MUNICIPAL INVENTORY

DATE OF ASSESSMENT:

LAST REVISION DATE:



SITE No. 68

PREVIOUS LISTINGS

The National Trust W.A.
Heritage Council of W.A.
HCWA No.
The National Estate Listed
Local Authority

Film No. Neg. No. Date: 27/7/2012

PLACE NAME:

Type of Place:

Former or other Names:

Address: 79 Shaw Street, Coolgardie

Map Ref.:

Lot/Location: 369

Diagram/Plan:

C/T: Vol/Follo

Reserve Details:

Vesting:

Purpose:

OWNER NAME: G.R. Kukura & J. N. Vallis

Owner contacted? (Y/N)

Address / Phone / Fax: 79 Shaw Street, Coolgardie

Occupied (Y/N) Y

Occupier Name: TBA

Public Accessibility: N

Mining Lease:

DATE BUILT: c1910

Source of Date: Estimate

ARCHITECT / DESIGNER / BUILDER:

HISTORIC THEME: Gold boom suburban settlement

CONSTRUCTION: Timber frame and part weatherboard and part fibro clad

INTEGRITY: High

AUTHENTICITY: High

CONDITION: Fair

DESCRIPTION: A symmetrically planned hipped roof house with gables. It has small paned double hung windows and a simply framed front verandah. The front is weatherboard clad and is an elegant composition.

ORIGINAL USE: House

Later/ Current Use(s) House

HISTORICAL COMMENT: A later house from around 1910 and an important example of the late part of the principal period of development.

STATEMENT OF SIGNIFICANCE: An important to the streetscape and a good example of the late gold boom period.

CONSERVATION ACTION: Category 2

Photographs Rose Mitchell

Bibliography

COOLGARDIE MUNICIPAL INVENTORY

DATE OF ASSESSMENT:

LAST REVISION DATE:



SITE No. 69

PREVIOUS LISTINGS

The National Trust W.A.
Heritage Council of W.A.
HCWA No.
The National Estate Listed
Local Authority

Film No. 2 Neg. No. 21 Date: 27/2/95

PLACE NAME:

Type of Place: House

Former or other Names:

Address: 83 Shaw Street, Coolgardie

Map Ref.:

Lot/Location: 376

Diagram/Plan:

C/T: Vol/Follo

Reserve Details:

Vesting:

Purpose:

OWNER NAME: Steven M Hansen

Owner contacted? (Y/N)

Address / Phone / Fax: 83 Shaw Street, Coolgardie

Occupied (Y/N) Y

Occupier Name: Owner

Public Accessibility: N

Mining Lease:

DATE BUILT: c1910

Source of Date: Estimate

ARCHITECT / DESIGNER / BUILDER:

HISTORIC THEME: Late gold boom suburban settlement

CONSTRUCTION: Timber framed with iron roof and half weatherboard cladding.

INTEGRITY: High

AUTHENTICITY: High

CONDITION: Good

DESCRIPTION: A simple half weatherboard and fibro house with an iron roof and interesting details to the house gables at each end of the verandah.

ORIGINAL USE: House

Later/ Current Use(s) House

HISTORICAL COMMENT: A minor example of the late gold boom period, transported to Coolgardie in more recent times.

STATEMENT OF SIGNIFICANCE: A minor house that contributes positively to the streetscape.

CONSERVATION ACTION: Category 3

Photographs

Bibliography

COOLGARDIE MUNICIPAL INVENTORY

DATE OF ASSESSMENT:

LAST REVISION DATE:



SITE No. 70

PREVIOUS LISTINGS

The National Trust W.A.
Heritage Council of W.A.
HCWA No.
The National Estate Listed
Local Authority

Recorded 27/10/76

TPS No. 4 Schedule V

Film No. 2 Neg. No. 17 Date: 27/2/95

PLACE NAME:

Type of Place: House

Former or other Names:

Address: 67 Shaw Street, Coolgardie

Map Ref.:

Lot/Location: 393

Diagram/Plan:

C/T: Vol/Follo

Reserve Details:

Vesting:

Purpose:

OWNER NAME: A. H. James

Owner contacted? (Y/N)

Address / Phone / Fax: 67 Shaw Street, Coolgardie

Occupied (Y/N) Yes

Occupier Name: Owner

Public Accessibility: Nil

Mining Lease:

DATE BUILT: 1890s

Source of Date: Estimated

ARCHITECT / DESIGNER / BUILDER:

HISTORIC THEME: Gold boom suburban settlement

CONSTRUCTION: Timber framed and iron with part fibro cladding and sprung iron verandah.

INTEGRITY: Moderate

AUTHENTICITY: Moderate

CONDITION: Fair

DESCRIPTION: A gabled roof cottage with an unusual sprung corrugated iron roof over the east verandah and tall metal fire place flues. It has a strongly evocative gold boom image.

ORIGINAL USE: House

Later/ Current Use(s) House

HISTORICAL COMMENT: An early house dating from the early gold boom period.

STATEMENT OF SIGNIFICANCE: An important modest house from the early gold boom period.

CONSERVATION ACTION: Category 2

Photographs
Bibliography

COOLGARDIE MUNICIPAL INVENTORY

DATE OF ASSESSMENT:

LAST REVISION DATE:



SITE No. 71

PREVIOUS LISTINGS

The National Trust W.A.
Heritage Council of W.A.
HCWA No.
The National Estate Listed
Local Authority

Recorded 27/10/76

TPS No. 4 Schedule V

Film No. Neg. No. Date 27/7/2012

PLACE NAME: House late 1890s

Type of Place: House

Former or other Names:

Address: 78 Shaw Street, Coolgardie

Map Ref.:

Lot/Location: 435

Diagram/Plan:

C/T: Vol/Follo

Reserve Details:

Vesting:

Purpose:

OWNER NAME: M.B and G.A. Barfield

Owner contacted? (Y/N)

Address / Phone / Fax: 78 Shaw Street, Coolgardie

Occupied (Y/N) Yes

Occupier Name: Owner

Public Accessibility: Nil

Mining Lease:

DATE BUILT: 1890s

Source of Date:

ARCHITECT / DESIGNER / BUILDER:

HISTORIC THEME: Gold boom suburban settlement

CONSTRUCTION: Timber framed with iron walls and roof.

INTEGRITY: High

AUTHENTICITY: High

CONDITION: Good

DESCRIPTION: A simple symmetrically planned cottage with a hipped roof and broken back roof over the verandah. The verandah is simply framed and the brackets appear to have been added. It has double hung sash windows.

ORIGINAL USE: House

Later/ Current Use(s) House

HISTORICAL COMMENT: A good example of a simple cottage that is well maintained and contributes positively to the image of Coolgardie.

STATEMENT OF SIGNIFICANCE: A well maintained goldfields cottage well worth conserving.

CONSERVATION ACTION: Category 2

Photographs Rose Mitchell

Bibliography

COOLGARDIE MUNICIPAL INVENTORY

DATE OF ASSESSMENT:

LAST REVISION DATE:



SITE No. 72

PREVIOUS LISTINGS

The National Trust W.A.
Heritage Council of W.A.
HCWA No.
The National Estate Listed
Local Authority

Recorded 27/10/76

TPS No. 4 Schedule V

Film No. 1 Neg. No. 18 Date: 27/7/2012

PLACE NAME: House late 1890s

Type of Place: House

Former or other Names:

Address: 85 Shaw Street, Coolgardie

Map Ref.:

Lot/Location: 372

Diagram/Plan:

C/T: Vol/Follo

Reserve Details:

Vesting:

Purpose:

OWNER NAME: M.P. Rogerson and C.M. Collins

Owner contacted? (Y/N)

Address / Phone / Fax:

Occupied (Y/N) Yes

Occupier Name: Owners

Public Accessibility: Nil

Mining Lease:

DATE BUILT: Late 1890s

Source of Date: Estimate

ARCHITECT / DESIGNER / BUILDER:

HISTORIC THEME: Gold boom suburban settlement

CONSTRUCTION: Brick quoins with coursed rubble infill and an iron roof of an elaborate design.

INTEGRITY: High

AUTHENTICITY: Moderate

CONDITION: Fair

DESCRIPTION: The house features a two bay window frontage, which organize the front elevation. It is a substantial house with brick quoins to corners of the building as well as the openings. It bears a strong resemblance to a house at 67 Forrest Street.

ORIGINAL USE: House

Later/ Current Use(s) House

HISTORICAL COMMENT: This house appears to be related to a house at 67 Forrest Street and is very similar in many respects. It was built by W.Hays for Birbeck and Hoffman and sold on to Fred Bow of Kunanalling fame and then became the presbytery before being bought by Ben prior.

STATEMENT OF SIGNIFICANCE: One of the more important individual houses and one of a small number of surviving brick houses.

CONSERVATION ACTION: Category 2

Photographs Rose Mitchell

Bibliography

COOLGARDIE MUNICIPAL INVENTORY

DATE OF ASSESSMENT:

LAST REVISION DATE:



SITE No. 73

PREVIOUS LISTINGS

The National Trust W.A.
Heritage Council of W.A.
HCWA No.
The National Estate Listed
Local Authority

Classified 27/10/76

1740

Listed 21/3/78

Film No. 2 Neg. No. 15 Date: 27/7/2012

PLACE NAME: House

Type of Place: House

Former or other Names:

Address: 79 MacDonald Street, Coolgardie

Map Ref.:

Lot/Location: 1132

Diagram/Plan:

C/T: Vol/Follo 1111/130

Reserve Details:

Vesting:

Purpose:

OWNER NAME: C.A. & D.M. Simmons

Owner contacted? (Y/N)

Address / Phone / Fax: 79 MacDonald Street, Coolgardie

Occupied (Y/N) Yes

Occupier Name: Owner

Public Accessibility: Nil

Mining Lease:

DATE BUILT: 1895

Source of Date: Estimated

ARCHITECT / DESIGNER / BUILDER:

HISTORIC THEME: Gold boom suburban settlement

CONSTRUCTION: Face brickwork with stucco architraves, sills and strings. It has a timber framed verandah. The front gable over a thrust room is elaborately half timbered with pebbledash infill.

INTEGRITY: High

AUTHENTICITY: High

CONDITION: Fair

DESCRIPTION: A brick house with corrugated iron roof built in the boom period of Coolgardie's establishment. It is elaborately detailed with a timber verandah frieze, unusually dark brickwork for the goldfields and an elaborately infilled timber and pebbledash gable similar in technique to Warden Finnerty's house. The windows around the door assembly are stained glass in small panes as are the upper sashed in double hung windows.

ORIGINAL USE: House

Later/ Current Use(s) House

HISTORICAL COMMENT: An important house and amongst the very few substantial brick houses to survive.

STATEMENT OF SIGNIFICANCE: One of the few remaining examples of the more opulent and permanent houses in Coolgardie.

CONSERVATION ACTION: Category 2

Photographs Rose Mitchell
Bibliography

COOLGARDIE MUNICIPAL INVENTORY

DATE OF ASSESSMENT:

LAST REVISION DATE:



SITE No. 74

PREVIOUS LISTINGS

The National Trust W.A.
Heritage Council of W.A.
HCWA No.
The National Estate Listed
Local Authority

TPS No. 4 Schedule V

Film No. Neg. No. Date:

PLACE NAME: John Morgan Well – John Morgan Park

Type of Place: Well

Former or other Names:

Address: George Cowcill Street

Map Ref.:

Lot/Location: 414

Diagram/Plan:

C/T: Vol/Follo

Reserve Details: Crown

Vesting:

Purpose:

OWNER NAME: Shire of Coolgardie

Owner contacted? (Y/N)

Address / Phone / Fax: Bayley Street, Coolgardie

Occupied (Y/N)

Occupier Name: Owner

Public Accessibility: Nil

Mining Lease:

DATE BUILT: 1897

Source of Date: Gresham

ARCHITECT / DESIGNER / BUILDER:

HISTORIC THEME:

CONSTRUCTION:

INTEGRITY:

AUTHENTICITY:

CONDITION:

DESCRIPTION:

ORIGINAL USE:

Later/ Current Use(s)

HISTORICAL COMMENT:

STATEMENT OF SIGNIFICANCE:

CONSERVATION ACTION: Category 2

Photographs

Bibliography

COOLGARDIE MUNICIPAL INVENTORY

DATE OF ASSESSMENT:

LAST REVISION DATE:



SITE No. 75

PREVIOUS LISTINGS

The National Trust W.A.

Heritage Council of W.A.

HCWA No.

3311

The National Estate Listed

Local Authority

Film No. Neg. No. Date:

PLACE NAME: King Battery

Type of Place:

Former or other Names:

Address: Wollubar, Coolgardie

Map Ref.:

Lot/Location:

Diagram/Plan:

C/T: Vol/Follo

Reserve Details:

Vesting:

Purpose:

OWNER NAME:

Owner contacted? (Y/N)

Address / Phone / Fax:

Occupied (Y/N)

Occupier Name:

Public Accessibility:

Mining Lease:

DATE BUILT:

Source of Date:

ARCHITECT / DESIGNER / BUILDER:

HISTORIC THEME:

CONSTRUCTION:

INTEGRITY:

AUTHENTICITY:

CONDITION:

DESCRIPTION:

ORIGINAL USE:

Later/ Current Use(s)

HISTORICAL COMMENT:

STATEMENT OF SIGNIFICANCE:

CONSERVATION ACTION:

Photographs

Bibliography

COOLGARDIE MUNICIPAL INVENTORY

DATE OF ASSESSMENT:

LAST REVISION DATE:



SITE No. 76

PREVIOUS LISTINGS

The National Trust W.A.
Heritage Council of W.A.
HCWA No.
The National Estate Listed
Local Authority

Film No. Neg. No. Date:

PLACE NAME: Ullumbay, Wallangie, 71 Mile Soaks

Type of Place: Soaks/well

Former or other Names:

Address: Southern Cross to Goongarrie Rd, Jaurdie Station

Map Ref.:

Lot/Location:

Diagram/Plan:

C/T: Vol/Follo

Reserve Details:

Vesting:

Purpose:

OWNER NAME: CALM

Owner contacted? (Y/N)

Address / Phone / Fax: PO Box 10173, Kalgoorlie

Occupied (Y/N) No

Occupier Name:

Public Accessibility: Open

Mining Lease:

DATE BUILT:

Source of Date:

ARCHITECT / DESIGNER / BUILDER:

HISTORIC THEME:

CONSTRUCTION:

INTEGRITY: High

AUTHENTICITY: High

CONDITION: Good

DESCRIPTION: A number of fully covered soaks adjacent to granite rocks along the old Southern Cross to Goongarrie Road. The soaks are constructed with rock linings and are covered with framed galvanized iron. Graffiti on some of the soak covers date back to 1949. There is an old grave close to Walangie (or Deadmans) Soak, and a windlass well over 71 Mile Soak.

ORIGINAL USE: Water

Later/ Current Use(s)

HISTORICAL COMMENT: These soaks were the only reliable source of water along an otherwise dry route and would have been important camping and tethering areas along this route.

STATEMENT OF SIGNIFICANCE: Significant as an important source of water on the Southern Cross to Goongarrie Road, one of the major transportation arteries to the Eastern Goldfields.

CONSERVATION ACTION: Category 3

Photographs

Bibliography

COOLGARDIE MUNICIPAL INVENTORY

DATE OF ASSESSMENT:

LAST REVISION DATE:



SITE No. 77

PREVIOUS LISTINGS

The National Trust W.A.
Heritage Council of W.A.
HCWA No.
The National Estate Listed
Local Authority

Film No. Neg. No. Date:

PLACE NAME: Dwarf's House

Type of Place: Prospector's House

Former or other Names:

Address: VIA Nepean Road

Map Ref.: 320600E 6563500N

Lot/Location:

Diagram/Plan:

C/T: Vol/Follo

Reserve Details: 198 / 25

Vesting: Lands and Forrest Comm.

Purpose: Timber

OWNER NAME: Robert Hoffmann

Owner contacted? (Y/N)

Address / Phone / Fax: PO Box Coolgardie

Occupied (Y/N) Yes

Occupier Name:

Public Accessibility: Open

Mining Lease: GML 15 / 6515, Galooli Pastoral Lease

DATE BUILT:

Source of Date:

ARCHITECT / DESIGNER / BUILDER:

HISTORIC THEME: Early bush carpentry

CONSTRUCTION: Galvanized iron, bush timber and wire.

INTEGRITY: High

AUTHENTICITY: High

CONDITION: Good

DESCRIPTION: A good example of an early prospector's house built from the limited resources available predominantly corrugated iron and bush timbers and exhibiting innovative environmental design features.

ORIGINAL USE: House

Later/ Current Use(s) House

HISTORICAL COMMENT: A surviving camp on the Bellbird lease.

STATEMENT OF SIGNIFICANCE: The building illustrates the way of life of early prospectors in remote areas and is representative of their innovative design and bush carpentry construction skills. This building has been well preserved to date due to its remote location and has rarity value as most such structures have been destroyed. Current mining operations may threaten the preservation of the structure.

CONSERVATION ACTION: Category 2

Photographs

Bibliography

COOLGARDIE MUNICIPAL INVENTORY

DATE OF ASSESSMENT:

LAST REVISION DATE:



SITE No. 78

PREVIOUS LISTINGS

The National Trust W.A.
Heritage Council of W.A.
HCWA No.
The National Estate Listed
Local Authority

Film No. Neg. No. Date:

PLACE NAME: The Golden Hole

Type of Place: Mine Site

Former or other Names:

Address: Londonderry via Nepean Road

Map Ref.: AMGS 651200MN 3194000

Lot/Location:

Diagram/Plan:

C/T: Vol/Follo

Reserve Details: 198 / 25

Vesting: Lands and Forest Comm.

Purpose: Timber

OWNER NAME: Smyth

Owner contacted? (Y/N)

Address / Phone / Fax:

Occupied (Y/N) No

Occupier Name:

Public Accessibility: Open

Mining Lease: ML 15/11, Calooli Pastoral Lease

DATE BUILT: 1980s

Source of Date:

ARCHITECT / DESIGNER / BUILDER:

HISTORIC THEME: Mining

CONSTRUCTION:

INTEGRITY: Moderate

AUTHENTICITY:

CONDITION: Poor

DESCRIPTION: Some of the old shafts and relics from the early days of mining remain but the site has been damaged by indiscriminate sampling and bulk sampling.

ORIGINAL USE: Mining

Later/ Current Use(s) Pastoral Lease

HISTORICAL COMMENT: This mine site was the centre of the Londonderry share scandal in the 1890s which is infamous in the share broking world and a part of Australian mining folklore. It has potential as a major tourist destination but is threatened by indiscriminate mining.

STATEMENT OF SIGNIFICANCE: The site of one of Australia's greatest gold share flascos which has historic value.

CONSERVATION ACTION: Category 4

Photographs
Bibliography

COOLGARDIE MUNICIPAL INVENTORY

DATE OF ASSESSMENT:

LAST REVISION DATE:



SITE No. 79

PREVIOUS LISTINGS

The National Trust W.A.
Heritage Council of W.A.
HCWA No.
The National Estate Listed
Local Authority

Film No. Neg. No. Date:

PLACE NAME: Spargoville

Type of Place: Site

Former or other Names:

Address: Nepean / Spargoville Road

Map Ref.:

Lot/Location:

Diagram/Plan:

C/T: Vol/Follo

Reserve Details:

Vesting:

Purpose:

OWNER NAME:

Owner contacted? (Y/N)

Address / Phone / Fax:

Occupied (Y/N)

Occupier Name:

Public Accessibility:

Mining Lease:

DATE BUILT: 1897

Source of Date: Estimate

ARCHITECT / DESIGNER / BUILDER:

HISTORIC THEME: Mining boom and failure

CONSTRUCTION:

INTEGRITY:

AUTHENTICITY:

CONDITION:

DESCRIPTION: Site of an abandoned mining town

ORIGINAL USE:

Later/ Current Use(s)

HISTORICAL COMMENT: An integral part of the goldfields story; a brief success followed by disappointment and extinction.

STATEMENT OF SIGNIFICANCE: An important site worth marking

CONSERVATION ACTION: Category 4

Photographs
Bibliography

COOLGARDIE MUNICIPAL INVENTORY

DATE OF ASSESSMENT:

LAST REVISION DATE:



SITE No. 80

PREVIOUS LISTINGS

The National Trust W.A.
Heritage Council of W.A.
HCWA No.
The National Estate Listed
Local Authority

Film No. Neg. No. Date:

PLACE NAME: Kurrawang

Type of Place: Abandoned town

Former or other Names:

Address: Great Eastern Highway

Map Ref.:

Lot/Location:

Diagram/Plan:

C/T: Vol/Folio

Reserve Details:

Vesting:

Purpose:

OWNER NAME:

Owner contacted? (Y/N)

Address / Phone / Fax:

Occupied (Y/N)

Occupier Name:

Public Accessibility: Y

Mining Lease:

DATE BUILT: 1897

Source of Date: Estimate

ARCHITECT / DESIGNER / BUILDER:

HISTORIC THEME: Abandoned mining town

CONSTRUCTION:

INTEGRITY:

AUTHENTICITY:

CONDITION:

DESCRIPTION:

ORIGINAL USE: Woodline town

Later/ Current Use(s) Abandoned town site

HISTORICAL COMMENT: Kurrawang was on the Kalgoorlie Woodlines. The whole settlement was dismantled in 1937 and move to Lakeside. Kurrawang was clear felled for timber for the mines. It later became a mission for Aboriginal people. An integral part of the goldfields story; a brief success followed by disappointment and extinction.

STATEMENT OF SIGNIFICANCE: An important site worth marking

CONSERVATION ACTION: Category 4

Photographs
Bibliography

COOLGARDIE MUNICIPAL INVENTORY

DATE OF ASSESSMENT:

LAST REVISION DATE:



SITE No. 81

PREVIOUS LISTINGS

The National Trust W.A.
Heritage Council of W.A.
HCWA No.
The National Estate Listed
Local Authority

Film No. Neg. No. Date:

PLACE NAME: Dunnsville

Type of Place: Abandoned town

Former or other Names:

Address: Jaurdi Hills Road

Map Ref.:

Lot/Location:

Diagram/Plan:

C/T: Vol/Follo

Reserve Details:

Vesting:

Purpose:

OWNER NAME:

Owner contacted? (Y/N)

Address / Phone / Fax:

Occupied (Y/N)

Occupier Name:

Public Accessibility:

Mining Lease:

DATE BUILT: 1894

Source of Date: Gazettal

ARCHITECT / DESIGNER / BUILDER:

HISTORIC THEME:

CONSTRUCTION:

INTEGRITY:

AUTHENTICITY:

CONDITION:

DESCRIPTION:

ORIGINAL USE:

Later/ Current Use(s)

HISTORICAL COMMENT: This was the site of the Wealth of Nations mine; another apparently rich discovery that was floated in London and vastly over subscribed. It turned out to be a poor find. An integral part of the goldfields story; a brief success followed by disappointment and extinction.

STATEMENT OF SIGNIFICANCE: An important site well worth marking.

CONSERVATION ACTION: Category 4

Photographs
Bibliography

COOLGARDIE MUNICIPAL INVENTORY

DATE OF ASSESSMENT:

LAST REVISION DATE:



SITE No. 82

PREVIOUS LISTINGS

The National Trust W.A.
Heritage Council of W.A.
HCWA No.
The National Estate Listed
Local Authority

Film No. Neg. No. Date:21/7/2012

PLACE NAME: Bulla Bulling

Type of Place: Former town

Former or other Names:

Address: Great Eastern Highway

Map Ref.:

Lot/Location:

Diagram/Plan:

C/T: Vol/Follo

Reserve Details:

Vesting:

Purpose:

OWNER NAME:

Owner contacted? (Y/N)

Address / Phone / Fax:

Occupied (Y/N)

Occupier Name:

Public Accessibility: Y

Mining Lease:

DATE BUILT: 1895

Source of Date: Estimate

ARCHITECT / DESIGNER / BUILDER:

HISTORIC THEME: Hospitality

CONSTRUCTION:

INTEGRITY:

AUTHENTICITY:

CONDITION:

DESCRIPTION: Only the Rock tavern remains of what was once a small town where coaches rested and stopped over.

ORIGINAL USE: Coaching stop

Later/ Current Use(s) Service station tavern

HISTORICAL COMMENT: Bulla Bulling is located near a granite outcrop and there was a well established there by Hunt. It owes its existence chiefly to being a convenient rest stop along the Southern Cross Coolgardie route.

STATEMENT OF SIGNIFICANCE: An important stopover point on the Southern Cross Coolgardie route.

CONSERVATION ACTION: Category 4

Photographs Rose Mitchell

Bibliography

COOLGARDIE MUNICIPAL INVENTORY

DATE OF ASSESSMENT:

LAST REVISION DATE:



SITE No. 83

PREVIOUS LISTINGS

The National Trust W.A.
Heritage Council of W.A.
HCWA No.
The National Estate Listed
Local Authority

Film No. Neg. No. Date:

PLACE NAME: Widgiemooltha

Type of Place:

Former or other Names:

Address: Coolgardie Esperance Highway

Map Ref.:

Lot/Location:

Diagram/Plan:

C/T: Vol/Folio

Reserve Details:

Vesting:

Purpose:

OWNER NAME:

Owner contacted? (Y/N)

Address / Phone / Fax:

Occupied (Y/N)

Occupier Name:

Public Accessibility:

Mining Lease:

DATE BUILT: 1896

Source of Date:

ARCHITECT / DESIGNER / BUILDER:

HISTORIC THEME: Gold mining town

CONSTRUCTION:

INTEGRITY:

AUTHENTICITY:

CONDITION:

DESCRIPTION: The Parts mine was one of those serviced by Widgiemooltha

ORIGINAL USE: Mining town

Later/ Current Use(s) Mining town

HISTORICAL COMMENT: A small town developed to service the surrounding mining areas.

STATEMENT OF SIGNIFICANCE: An important site worth marking.

CONSERVATION ACTION: Category 4

Photographs
Bibliography

COOLGARDIE MUNICIPAL INVENTORY

DATE OF ASSESSMENT:

LAST REVISION DATE:



SITE No. 84

PREVIOUS LISTINGS

The National Trust W.A.
Heritage Council of W.A.
HCWA No.
The National Estate Listed
Local Authority

Film No. Neg. No. Date: 21/7/2012

PLACE NAME: Bonnievale

Type of Place: Abandoned town

Former or other Names: Bonnie Vale

Address: Coolgardie North Road

Map Ref.:

Lot/Location:

Diagram/Plan:

C/T: Vol/Follo

Reserve Details:

Vesting:

Purpose:

OWNER NAME:

Owner contacted? (Y/N)

Address / Phone / Fax:

Occupied (Y/N)

Occupier Name:

Public Accessibility:

Mining Lease:

DATE BUILT: 1897

Source of Date: Estimate

ARCHITECT / DESIGNER / BUILDER:

HISTORIC THEME: Abandoned mining town

CONSTRUCTION:

INTEGRITY:

AUTHENTICITY:

CONDITION:

DESCRIPTION: An important mining town site made more important by the story of the Varischetti rescue after a 10 day ordeal underground. He was rescued by his workmates and Hughes and Hearne are particularly important figures in the successful rescue bid.

ORIGINAL USE:

Later/ Current Use(s)

HISTORICAL COMMENT: An important mining town site made more important by the story of the Varischetti rescue after a 10 day ordeal underground. He was rescued by his workmates and Hughes and Hearne are particularly important figures in the successful rescue bid.

STATEMENT OF SIGNIFICANCE: Important as a mining site but probably more important for the associate tale of determination and heroism associated with the Varischetti rescue.

CONSERVATION ACTION: A very important site well worth marking.

Photographs Rose Mitchell

Bibliography

COOLGARDIE MUNICIPAL INVENTORY

DATE OF ASSESSMENT:

LAST REVISION DATE:



SITE No. 85

PREVIOUS LISTINGS

The National Trust W.A.
Heritage Council of W.A.
HCWA No.
The National Estate Listed
Local Authority

Film No. Neg. No. Date:

PLACE NAME: Mungari

Type of Place: Abandoned town

Former or other Names:

Address: Great Eastern Highway

Map Ref.:

Lot/Location:

Diagram/Plan:

C/T: Vol/Follo

Reserve Details:

Vesting:

Purpose:

OWNER NAME:

Owner contacted? (Y/N)

Address / Phone / Fax:

Occupied (Y/N)

Occupier Name:

Public Accessibility: Y

Mining Lease:

DATE BUILT: 1897

Source of Date: Estimate

ARCHITECT / DESIGNER / BUILDER:

HISTORIC THEME: Abandoned gold mining town site

CONSTRUCTION:

INTEGRITY:

AUTHENTICITY:

CONDITION:

DESCRIPTION: An integral part of the goldfields story; a brief success followed by disappointment and extinction.

ORIGINAL USE: Mining town

Later/ Current Use(s) Abandoned town site

HISTORICAL COMMENT: An integral part of the goldfields story; a brief success followed by disappointment and extinction.

STATEMENT OF SIGNIFICANCE: An important site worth marking.

CONSERVATION ACTION: Category 4

Photographs

Bibliography

COOLGARDIE MUNICIPAL INVENTORY

DATE OF ASSESSMENT:

LAST REVISION DATE:



SITE No. 86

PREVIOUS LISTINGS

The National Trust W.A.
Heritage Council of W.A.
HCWA No.
The National Estate Listed
Local Authority

Film No. Neg. No. Date:

PLACE NAME: Higginsville

Type of Place: Abandoned town

Former or other Names:

Address: Coolgardie Esperance Highway

Map Ref.:

Lot/Location:

Diagram/Plan:

C/T: Vol/Follo

Reserve Details:

Vesting:

Purpose:

OWNER NAME:

Owner contacted? (Y/N)

Address / Phone / Fax:

Occupied (Y/N)

Occupier Name:

Public Accessibility:

Mining Lease:

DATE BUILT: 1905

Source of Date: Estimate

ARCHITECT / DESIGNER / BUILDER:

HISTORIC THEME: Abandoned mining town site

CONSTRUCTION:

INTEGRITY:

AUTHENTICITY:

CONDITION:

DESCRIPTION:

ORIGINAL USE: Mining town site

Later/ Current Use(s) Abandoned town site

HISTORICAL COMMENT: Site of the Two Boys mine and the discovery by Paddy Higgins. An integral part of the goldfields story; a brief success followed by disappointment and extinction.

STATEMENT OF SIGNIFICANCE: An important site worth marking.

CONSERVATION ACTION: Category 4

Photographs
Bibliography

COOLGARDIE MUNICIPAL INVENTORY

DATE OF ASSESSMENT:

LAST REVISION DATE:



SITE No. 87

PREVIOUS LISTINGS

The National Trust W.A.
Heritage Council of W.A.
HCWA No.
The National Estate Listed
Local Authority

Film No. Neg. No. Date: 21/7/2012

PLACE NAME: Kintore

Type of Place: Abandoned town

Former or other Names:

Address: Coolgardie North Road

Map Ref.:

Lot/Location:

Diagram/Plan:

C/T: Vol/Folio

Reserve Details:

Vesting:

Purpose:

OWNER NAME:

Owner contacted? (Y/N)

Address / Phone / Fax:

Occupied (Y/N)

Occupier Name:

Public Accessibility:

Mining Lease:

DATE BUILT: 1987

Source of Date: gazettal date

ARCHITECT / DESIGNER / BUILDER:

HISTORIC THEME: Gold mining

CONSTRUCTION:

INTEGRITY:

AUTHENTICITY:

CONDITION:

DESCRIPTION:

ORIGINAL USE: Mining town

Later/ Current Use(s) Abandoned town site

HISTORICAL COMMENT: Kintore was famous for the alluvium found in 'cement', a conglomerate material of detritus held together with calcium or siliceous material. Gold had been discovered in Kintore in 1895. An integral part of the goldfields story; a brief success followed by disappointment and extinction.

STATEMENT OF SIGNIFICANCE: An important site well worth marking.

CONSERVATION ACTION: Category 4

Photographs Rose Mitchell

Bibliography

COOLGARDIE MUNICIPAL INVENTORY

DATE OF ASSESSMENT:

LAST REVISION DATE:



SITE No. 88

PREVIOUS LISTINGS

The National Trust W.A.
Heritage Council of W.A.
HCWA No.
The National Estate Listed
Local Authority

Film No. Neg. No. Date:

PLACE NAME: Burbanks

Type of Place: Abandoned town

Former or other Names:

Address: Nepean Road

Map Ref.:

Lot/Location:

Diagram/Plan:

C/T: Vol/Follo

Reserve Details:

Vesting:

Purpose:

OWNER NAME:

Owner contacted? (Y/N)

Address / Phone / Fax:

Occupied (Y/N)

Occupier Name:

Public Accessibility:

Mining Lease:

DATE BUILT: 1897

Source of Date: Estimate

ARCHITECT / DESIGNER / BUILDER:

HISTORIC THEME: Gold mining town

CONSTRUCTION:

INTEGRITY:

AUTHENTICITY:

CONDITION:

DESCRIPTION:

ORIGINAL USE: Mining town

Later/ Current Use(s) Abandoned town

HISTORICAL COMMENT: Burbanks was the site of the Burbank's Birthday Gift, Burbank's North and Burbank's Consols mine. It was also the site of a wage hold up on 22 January 1897. It is an integral part of the goldfields story; a brief success followed by disappointment.

STATEMENT OF SIGNIFICANCE: An important site worth marking.

CONSERVATION ACTION: Category 4

Photographs

Bibliography

COOLGARDIE MUNICIPAL INVENTORY

DATE OF ASSESSMENT:

LAST REVISION DATE:



SITE No. 89

PREVIOUS LISTINGS

The National Trust W.A.
Heritage Council of W.A.
HCWA No.
The National Estate Listed
Local Authority

Film No. Neg. No. Date:

PLACE NAME: Kundana

Type of Place: Abandoned town

Former or other Names:

Address:

Map Ref.:

Lot/Location:

Diagram/Plan:

C/T: Vol/Follo

Reserve Details:

Vesting:

Purpose:

OWNER NAME:

Owner contacted? (Y/N)

Address / Phone / Fax:

Occupied (Y/N)

Occupier Name:

Public Accessibility:

Mining Lease:

DATE BUILT: 1897

Source of Date: Estimate

ARCHITECT / DESIGNER / BUILDER:

HISTORIC THEME: Gold mining town

CONSTRUCTION:

INTEGRITY:

AUTHENTICITY:

CONDITION:

DESCRIPTION:

ORIGINAL USE: Mining town

Later/ Current Use(s) Abandoned town

HISTORICAL COMMENT: An integral part of the goldfields story; a brief period of success followed by disappointment and extinction.

STATEMENT OF SIGNIFICANCE: An important site worth marking

CONSERVATION ACTION: Category 4

Photographs
Bibliography

COOLGARDIE MUNICIPAL INVENTORY

DATE OF ASSESSMENT:

LAST REVISION DATE:



SITE No. 90

PREVIOUS LISTINGS

The National Trust W.A.
Heritage Council of W.A.
HCWA No.
The National Estate Listed
Local Authority

Film No. Neg. No. Date:

PLACE NAME: Londonderry

Type of Place: Abandoned town

Former or other Names:

Address: Napean Road

Map Ref.:

Lot/Location:

Diagram/Plan:

C/T: Vol/Follo

Reserve Details:

Vesting:

Purpose:

OWNER NAME:

Owner contacted? (Y/N)

Address / Phone / Fax:

Occupied (Y/N)

Occupier Name:

Public Accessibility:

Mining Lease:

DATE BUILT: 1897

Source of Date: Estimate

ARCHITECT / DESIGNER / BUILDER:

HISTORIC THEME: Gold mining town

CONSTRUCTION:

INTEGRITY:

AUTHENTICITY:

CONDITION:

DESCRIPTION:

ORIGINAL USE: Mining town

Later/ Current Use(s) Abandoned town

HISTORICAL COMMENT: The Golden Hole at Londonderry sparked one of the greatest gold share failures of the gold rushes; a salted mine was onsold to Lord Fingall and others who floated the Londonderry mine base on a £700,000 capitalization. The mine proved of little value and the shares plummeted.

STATEMENT OF SIGNIFICANCE: Important as the site concerned with notorious mine company float and collapse.

CONSERVATION ACTION: Category 4

Photographs

Bibliography

COOLGARDIE MUNICIPAL INVENTORY

DATE OF ASSESSMENT:

LAST REVISION DATE:



SITE No. 91

PREVIOUS LISTINGS

The National Trust W.A.
Heritage Council of W.A.
HCWA No.
The National Estate Listed
Local Authority

Film No. Neg. No. Date:

PLACE NAME: Carbine

Type of Place: Abandoned town

Former or other Names:

Address: Carbine – Ora Banda Road

Map Ref.:

Lot/Location:

Diagram/Plan:

C/T: Vol/Follo

Reserve Details:

Vesting:

Purpose:

OWNER NAME:

Owner contacted? (Y/N)

Address / Phone / Fax:

Occupied (Y/N)

Occupier Name:

Public Accessibility: Y

Mining Lease:

DATE BUILT: 1897

Source of Date: Estimate

ARCHITECT / DESIGNER / BUILDER:

HISTORIC THEME: Gold mining town

CONSTRUCTION:

INTEGRITY:

AUTHENTICITY:

CONDITION:

DESCRIPTION:

ORIGINAL USE: Mining town

Later/ Current Use(s) Abandoned town site

HISTORICAL COMMENT: A small town that grew up to service several surrounding mines. An integral part of the goldfields story; brief success followed by disappointment and extinction.

STATEMENT OF SIGNIFICANCE: An important site well worth marking.

CONSERVATION ACTION: Category 4

Photographs
Bibliography

COOLGARDIE MUNICIPAL INVENTORY

DATE OF ASSESSMENT:

LAST REVISION DATE:



SITE No. 92

PREVIOUS LISTINGS

The National Trust W.A.
Heritage Council of W.A.
HCWA No.
The National Estate Listed
Local Authority

Film No. Neg. No. Date:

PLACE NAME: Cairn's Camp

Type of Place: Mining camp

Former or other Names:

Address:

Map Ref.:

Lot/Location:

Diagram/Plan:

C/T: Vol/Follo

Reserve Details:

Vesting:

Purpose:

OWNER NAME: Goldfan NL

Owner contacted? (Y/N)

Address / Phone / Fax: 40 Kings Park Rd WEST PERTH 6005

Occupied (Y/N) N

Occupier Name:

Public Accessibility: N

Mining Lease:

DATE BUILT:

Source of Date:

ARCHITECT / DESIGNER / BUILDER:

HISTORIC THEME: Prospecting

CONSTRUCTION: Bush pole and iron

INTEGRITY: High

AUTHENTICITY: High

CONDITION: Fair

DESCRIPTION: A series of accretions on a small scale complete with some contents that demonstrate a way of existence.

ORIGINAL USE: House

Later/ Current Use(s) Abandoned

HISTORICAL COMMENT: One of a small number of prospector's camp that are becoming increasingly rare due to their fragile nature and being abandoned.

STATEMENT OF SIGNIFICANCE: An important example of a prospector's camp.

CONSERVATION ACTION: Category 2

Photographs
Bibliography

COOLGARDIE MUNICIPAL INVENTORY

DATE OF ASSESSMENT:

LAST REVISION DATE:



SITE No. 93

PREVIOUS LISTINGS

The National Trust W.A.
Heritage Council of W.A.
HCWA No.
The National Estate Listed
Local Authority

Film No. Neg. No. Date: 21/7/2012

PLACE NAME: Cyril Worth's Camp

Type of Place: Miner's camp

Former or other Names:

Address:

Map Ref.:

Lot/Location:

Diagram/Plan:

C/T: Vol/Follo

Reserve Details:

Vesting:

Purpose:

OWNER NAME: Coolgardie Gold NL

Owner contacted? (Y/N)

Address / Phone / Fax: PO Box 647, Coolgardie

Occupied (Y/N)

Occupier Name:

Public Accessibility:

Mining Lease:

DATE BUILT:

Source of Date:

ARCHITECT / DESIGNER / BUILDER:

HISTORIC THEME: Miner's camp

CONSTRUCTION: Bush pole and iron

INTEGRITY: High

AUTHENTICITY: High

CONDITION: Fair

DESCRIPTION: A rambling series of structures accommodating living quarters and workshops.

ORIGINAL USE: Miners camp

Later/ Current Use(s)

HISTORICAL COMMENT: A complex of indeterminate age that was in continuous use until the late 1980s and still has much of its material, newspapers, utensils and the like intact.

STATEMENT OF SIGNIFICANCE: One of a small number of mining camps relatively intact with a large accumulation of evidence of life on the property.

CONSERVATION ACTION: Category 2

Photographs Rose Mitchell

Bibliography

COOLGARDIE MUNICIPAL INVENTORY

DATE OF ASSESSMENT:

LAST REVISION DATE:



SITE No. 94

PREVIOUS LISTINGS

The National Trust W.A.
Heritage Council of W.A.
HCWA No.
The National Estate Listed
Local Authority

Film No. Neg. No. Date: 22/7/2012

PLACE NAME: Three head stamper battery

Type of Place: Industrial

Former or other Names:

Address:

Map Ref.:

Lot/Location:

Diagram/Plan:

C/T: Vol/Follo

Reserve Details:

Vesting:

Purpose:

OWNER NAME: Coolgardie Gold NL

Owner contacted? (Y/N)

Address / Phone / Fax: PO Box 647, Coolgardie

Occupied (Y/N)

Occupier Name:

Public Accessibility:

Mining Lease:

DATE BUILT:

Source of Date:

ARCHITECT / DESIGNER / BUILDER:

HISTORIC THEME: Industrial

CONSTRUCTION: Remains of a timber construction hopper and foundations for the stamper.

INTEGRITY: High

AUTHENTICITY: High

CONDITION: Fair

DESCRIPTION: The site comprises the remains of a battery with the most complete structure being a timber construction hopper.

ORIGINAL USE: Battery

Later/ Current Use(s) Abandoned

HISTORICAL COMMENT: Surviving evidence of the traditional manner of ore crushing prevalent on the goldfields from the 1890s until comparatively recent times.

STATEMENT OF SIGNIFICANCE: Important vestigial remains of goldfields industrial heritage.

CONSERVATION ACTION: Category 2

Photographs Rose Mitchell

Bibliography

COOLGARDIE MUNICIPAL INVENTORY

DATE OF ASSESSMENT:

LAST REVISION DATE:



SITE No. 95

PREVIOUS LISTINGS

The National Trust W.A.
Heritage Council of W.A.
HCWA No.
The National Estate Listed
Local Authority

Film No. Neg. No. Date: 22/7/2012

PLACE NAME: The Bluff

Type of Place: Natural feature

Former or other Names:

Address:

Map Ref.:

Lot/Location:

Diagram/Plan:

C/T: Vol/Follo

Reserve Details: Pt 3426

Vesting:

Purpose:

OWNER NAME: Shire of Coolgardie

Owner contacted? (Y/N)

Address / Phone / Fax: Bayley Street, Coolgardie

Occupied (Y/N)

Occupier Name:

Public Accessibility:

Mining Lease:

DATE BUILT:

Source of Date:

ARCHITECT / DESIGNER / BUILDER:

HISTORIC THEME:

CONSTRUCTION:

INTEGRITY:

AUTHENTICITY:

CONDITION:

DESCRIPTION: A natural landform feature, modified slightly by mining operations in the vicinity.

ORIGINAL USE:

Later/ Current Use(s)

HISTORICAL COMMENT: An important natural feature to the town and one upon which various designs were considered from time to time, including the construction of a restaurant at one time.

STATEMENT OF SIGNIFICANCE: An important natural feature.

CONSERVATION ACTION: Category 2

Photographs Rose Mitchell
Bibliography

COOLGARDIE MUNICIPAL INVENTORY

DATE OF ASSESSMENT:

LAST REVISION DATE:



SITE No. 96

PREVIOUS LISTINGS

The National Trust W.A.
Heritage Council of W.A.
HCWA No.
The National Estate Listed
Local Authority

Film No. Neg. No. Date: 21/7/2012

PLACE NAME: The Gorge

Type of Place: Natural feature

Former or other Names:

Address:

Map Ref.:

Lot/Location:

Diagram/Plan:

C/T: Vol/Follo

Reserve Details: 3142

Vesting: Shire

Purpose: Water Reserve

OWNER NAME: Shire of Coolgardie

Owner contacted? (Y/N)

Address / Phone / Fax: Bayley Street, Coolgardie

Occupied (Y/N)

Occupier Name:

Public Accessibility:

Mining Lease:

DATE BUILT:

Source of Date:

ARCHITECT / DESIGNER / BUILDER:

HISTORIC THEME: A picnic location

CONSTRUCTION:

INTEGRITY:

AUTHENTICITY:

CONDITION:

DESCRIPTION: A natural feature that has a permanent supply of water and is a picturesque location.

ORIGINAL USE:

Later/ Current Use(s)

HISTORICAL COMMENT: Historically a pleasant place for social occasions.

STATEMENT OF SIGNIFICANCE: Important water based natural feature.

CONSERVATION ACTION: Category 2

Photographs Rose Mitchell

Bibliography

COOLGARDIE MUNICIPAL INVENTORY

DATE OF ASSESSMENT:

LAST REVISION DATE:



SITE No. 97

PREVIOUS LISTINGS

The National Trust W.A.
Heritage Council of W.A.
HCWA No.
The National Estate Listed
Local Authority

Film No. Neg. No. Date:

PLACE NAME: Alfred's Camp

Type of Place: Miner's camp

Former or other Names:

Address: Tindall's, Dreadnought

Map Ref.:

Lot/Location:

Diagram/Plan:

C/T: Vol/Follo

Reserve Details:

Vesting:

Purpose:

OWNER NAME: Goldfan NL

Owner contacted? (Y/N)

Address / Phone / Fax:

Occupied (Y/N) N

Occupier Name:

Public Accessibility:

Mining Lease:

DATE BUILT:

Source of Date:

ARCHITECT / DESIGNER / BUILDER:

HISTORIC THEME: Prospecting and mining

CONSTRUCTION: Bush pole and corrugated galvanized iron and other recycled materials.

INTEGRITY: High

AUTHENTICITY: High

CONDITION: Fair

DESCRIPTION: A compound containing a cottage with earth floors, bush furniture and considerable evidence of occupation. The compound contains a variety of structures including the remains of a shed with a forge base in it. The earth floors are of clay and at present contains a number of objects that are semi submerged in the medium.

ORIGINAL USE: Miner's camp

Later/ Current Use(s)

HISTORICAL COMMENT: The compound is a demonstration of the hardship that prospectors were prepared to endure and of the resourcefulness of those forced to endure the harsh existence of marginal prospecting.

STATEMENT OF SIGNIFICANCE: A relatively intact an extensive example of a miner's camp that was in working use until the mid 1980s.

CONSERVATION ACTION: Category 2

Photographs

Bibliography